

PLANS OF PROPOSED

THE NEWTRON GROUP NEW CAMPUS CORPORATE HEADQUARTERS

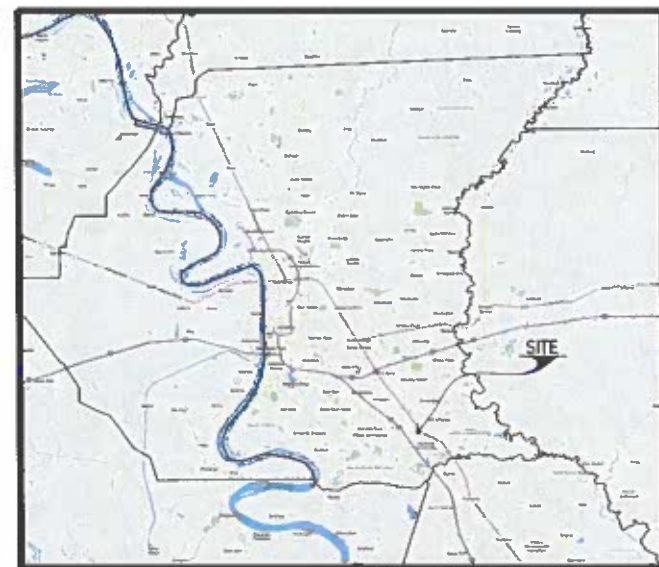
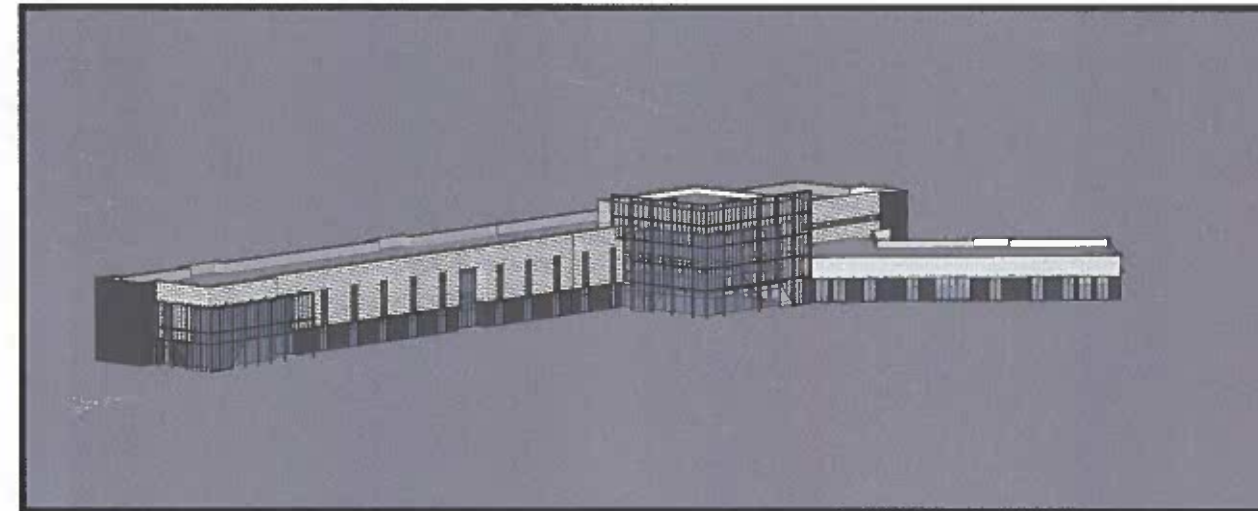
13926 AIRLINE HIGHWAY
EAST BATON ROUGE PARISH

PROJECT DIRECTORY	
ARCHITECT	WTD ARCHITECTURE, LLC 10019 PERKINS ROAD, SUITE C BATON ROUGE, LA 70810 225-412-4885
ARCHITECT	MKE ARCHITECTS, LLC 9800 AIRLINE HWY., SUITE 217 BATON ROUGE, LA 70816 225-412-0048
CIVIL ENGINEER	FOX-NESBIT ENGINEERING, LLC 9100 BLUEBONNET CENTRE BLVD., SUITE 301 BATON ROUGE, LA 70809 225-293-6595
LANDSCAPE ARCHITECT	ANGELO'S LANDSCAPE GROUP P.O. BOX 84715 BATON ROUGE, LA 70879 225-753-5276
STRUCTURAL ENGINEER	FOX-NESBIT ENGINEERING, LLC 9100 BLUEBONNET CENTRE BLVD., SUITE 301 BATON ROUGE, LA 70809 225-293-6595
MECHANICAL ENGINEER	GULF STATES ENGINEERING, INC. 1816 PASS RD. GULFPORT, MS 39501 228-864-5050
ELECTRICAL ENGINEER	GULF STATES ENGINEERING 1816 PASS RD. GULFPORT, MS 39501 228-864-5050
OWNER	NEWTRON DEVELOPMENT, LLC 8183 W EL CAJON DR. BATON ROUGE, LA 70815 225-273-0604

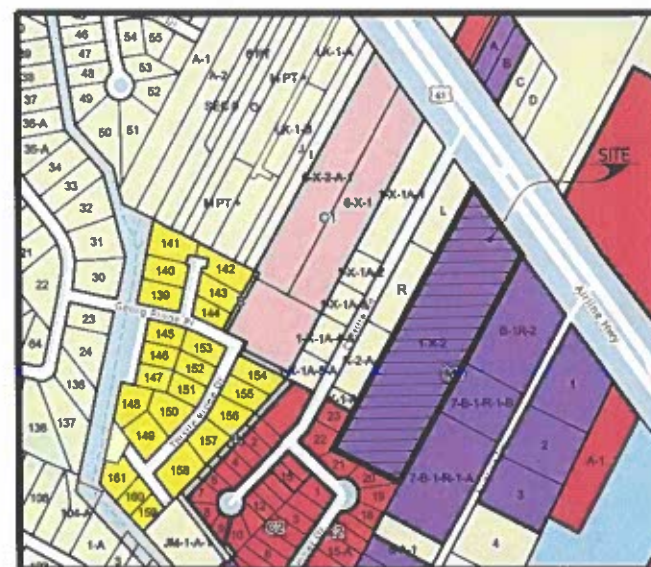
PLANNING SUMMARY	
EXISTING ZONING	M-1 (LIGHT INDUSTRIAL)
LOT & BLOCK MAP NO.	76
EXISTING LAND USE	COMMERCIAL
TOWNSHIP, RANGE, SECTION	T-8-S-R-2-E, SECT. 49
FUTURE LAND USE	EMPLOYMENT CENTER
JURISDICTION	PARISH
SCHOOL DISTRICT	EBR-6
CHARACTER AREA	SUBURBAN
EXISTING ZONING OF ADJOINING PARCELS	C2, R, & M-1
ACREAGE	9.92
NUMBER OF BUILDINGS	1
BUILDING SQUARE FOOTAGE	62,216 SF
NUMBER OF STORIES	2
PROPOSED USE	COMMERCIAL OFFICE BUILDING
FLOOD ZONE	X & AE

GENERAL SITE INFORMATION:

CPCC LOT ID NUMBER: 140740755
LOT 1-X-2 (9.92 ACRES)
JOEL S MANSUR TRACT
LOCATED IN SECTION 49 T-8-S-R-2-E, GREENSBURG LAND DISTRICT,
EAST BATON ROUGE PARISH, LOUISIANA FOR THE NEWTRON GROUP
PROJECT TRACKING NUMBERS SP-13-23, 54526-SP, 12914732



PARISH MAP



VICINITY MAP
SCALE 1" = 400'

INDEX TO SHEETS	
SHT.	DESCRIPTION
1	COVER SHEET
2	EXISTING CONDITIONS MAP
3	SITE PLAN
3.1	DETAILS
4	CIRCULATION PLAN
5	UTILITY SERVICE PLAN
L1.00	LANDSCAPE PLAN
L1.01	LANDSCAPE PLAN
L1.02	LANDSCAPE PLAN
L1.03	LANDSCAPE PLAN
L2.01	LANDSCAPE DETAILS
L2.02	LANDSCAPE DETAILS
A2.01	ARCHITECTURAL ELEVATIONS
A2.02	ARCHITECTURAL ELEVATIONS
A2.03	ARCHITECTURAL ELEVATIONS

WTD
ARCHITECTURE
11019 Perkins Road, Suite C
Baton Rouge, Louisiana 70810
Office: 225-412-4885
www.wtd-architecture.com

MKE
MKE ARCHITECTS
9800 Airline Highway, Suite 217
Baton Rouge, Louisiana 70816
Office: 225-412-0048
www.mkearchitects.com

Key Plan:
Consultants:

FOX-NESBIT
BATON ROUGE 225.293.6595
NEW ORLEANS www.fox-nesbit.com
ID: 9772 21221 03021

The Newtron Group
New Campus Corporate Headquarters
13926 Airline Highway
Baton Rouge, LA 70817

Phase: Review
Date: 01-02-2024
Revisions:

Professional Seal
Scale: NOT TO SCALE
Sht Description:
COVER SHEET

SP-13-23 12/29/2023 PC Set

GENERAL NOTES:

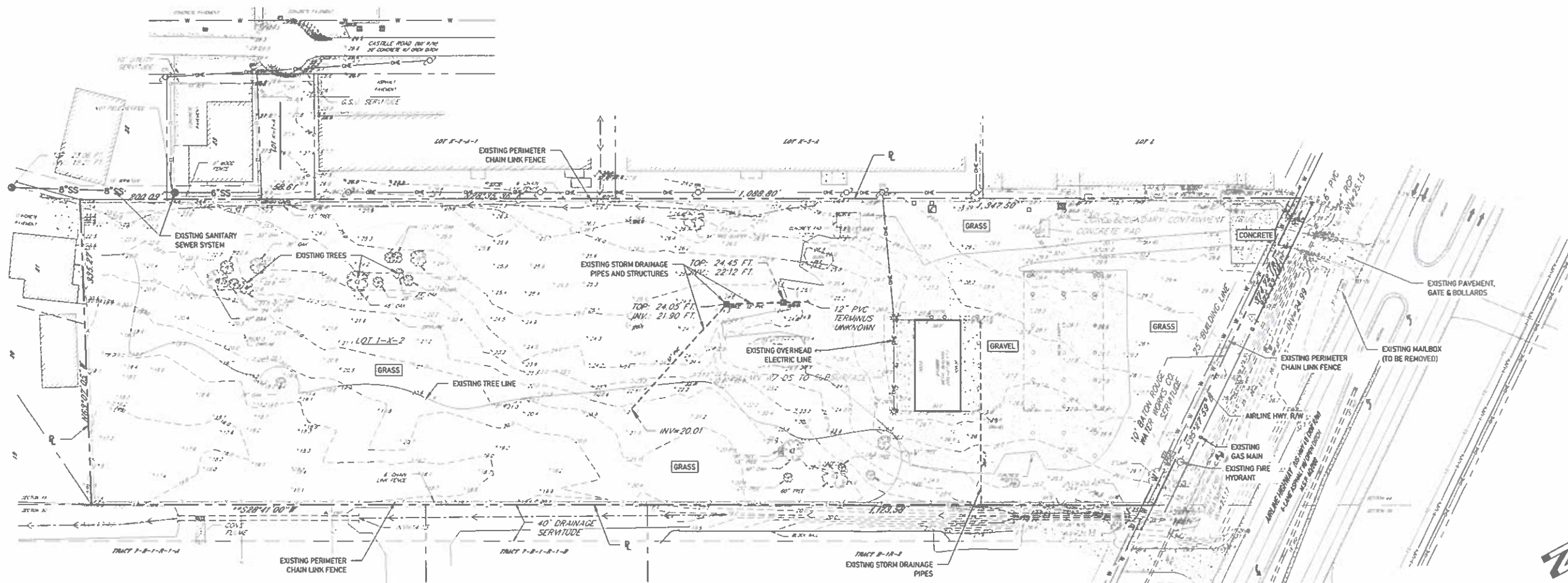
1. INFORMATION DEPICTING THE EXISTING CONDITIONS HEREON WAS TAKEN FROM TOPOGRAPHIC AND BOUNDARY SURVEY OF LOT 1-X-2 & LOT 1-A-1 LOCATED IN SECTION 49-T-8-SR-2-E, GREENSBURG LAND DISTRICT, EAST BATON ROUGE PARISH, LOUISIANA FOR THE NEWTRON GROUP BY TATUM ENGINEERING CONSULTANTS. FOX-NESBIT ENGINEERING, LLC HAS NOT FIELD-VERIFIED THE ITEMS IDENTIFIED ON THIS SURVEY.
2. IN ACCORDANCE WITH FEMA FLOOD INSURANCE RATE MAP PANEL 22033C0335E, DATED MAY 2, 2008, THIS PROPERTY IS LOCATED IN FLOOD ZONE "X". FLOOD ZONE INFORMATION SHALL BE CONFIRMED WITH EAST BATON ROUGE PARISH.

UTILITY COMPANIES	
WATER	BATON ROUGE WATER CO.
TELECOM.	AT&T, COX
GAS	ENTERGY
ELECTRIC	ENTERGY
SEWER	EAST BATON ROUGE

EXISTING UTILITIES LEGEND	
WATER PIPING	W
SANITARY SEWER LINE	SS
GAS LINE	G
STORM DRAINAGE PIPE	---
OVERHEAD ELECTRIC LINE	OHL
FIRE HYDRANT	⊕
WATER METER	⊕
WATER VALVE	⊕
STORM DRAINAGE STRUCTURES	■
SANITARY SEWER MANHOLE	⊕
POWER POLE	⊕



2 SITE AERIAL
Scale: 1" = 400'



1 EXISTING CONDITIONS MAP
Scale: 1" = 60'

WTD
ARCHITECTURE
WTD ARCHITECTURE
11019 Perkins Road, Suite C
Baton Rouge, Louisiana 70810
Office: 225-412-4855
www.wtd-architecture.com

MKE
ARCHITECTS
MKE ARCHITECTS
9800 Airline Highway, Suite 217
Baton Rouge, Louisiana 70816
Office: 225-412-0048
www.mkearchitects.com

Key Plan:
Case/Plans:
FOX-NESBIT
BATON ROUGE 225.293.8888
NEW ORLEANS www.fox-nesbit.com
0 2022 21221 20211

The Newtron Group
New Campus Corporate Headquarters
1320 Airline Highway
Baton Rouge, LA 70817

Phase: Review
Date: 01-02-2024
Revisions:

Professional Seal
Scale: 1" = 60'-0"
Site Description:
EXISTING CONDITIONS

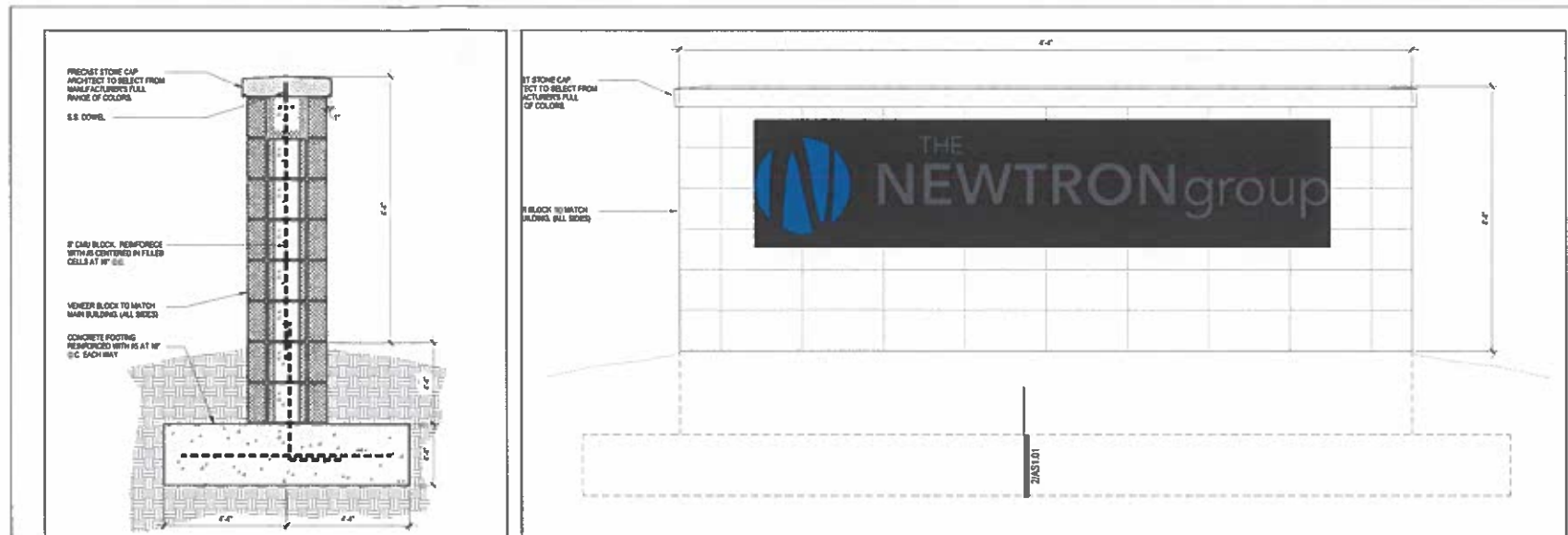
GENERAL NOTES:

- INFORMATION DEPICTING THE EXISTING CONDITIONS HEREON WAS TAKEN FROM "TOPOGRAPHIC AND BOUNDARY SURVEY OF LOT 1-X-2 & LOT K-1-A LOCATED IN SECTION 49-T-8-SR-2-E, GREENSBURG LAND DISTRICT, EAST BATON ROUGE PARISH, LOUISIANA FOR THE NEWTRON GROUP" BY TATUM ENGINEERING CONSULTANTS. FOX-NESBIT ENGINEERING, LLC HAS NOT FIELD-VERIFIED THE ITEMS IDENTIFIED ON THIS SURVEY.
- IN ACCORDANCE WITH FEMA FLOOD INSURANCE RATE MAP PANEL 22033C0335E, DATED MAY 2, 2008, THIS PROPERTY IS LOCATED IN FLOOD ZONE "X". FLOOD ZONE INFORMATION SHALL BE CONFIRMED WITH EAST BATON ROUGE PARISH.
- MAIL COLLECTION WILL BE INTERNALLY AT BUILDING. NO EXTERNAL MAIL KIOSK PROVIDED AT SITE.

SITE PLAN LEGEND	
BUILDING ENTRANCES	➔
CONCRETE SIDEWALKS	▬
PROPOSED DRAINAGE STRUCTURES	■

SETBACKS	
FRONT	25'
SIDE	N/A
REAR	N/A
CORNER	10'

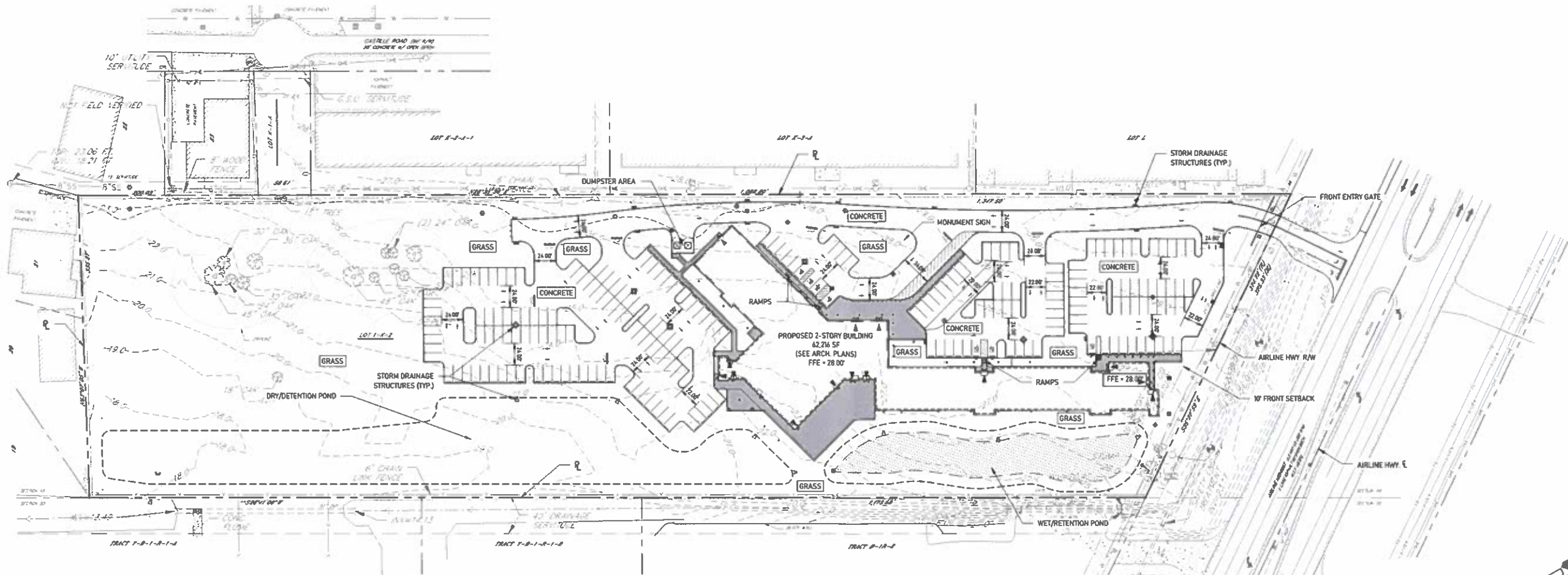
BUILDING SUMMARY	
NUMBER OF BUILDINGS	1
BUILDING HEIGHT	48'-7"
NUMBERS OF STORIES	2



2 Monument Sign Detail

3 Monument Sign Detail

2 SITE DETAILS
Scale: NOT TO SCALE - LISTED SCALES ARE VOID



1 SITE PLAN
Scale: 1" = 60'



WTD
ARCHITECTURE
WTD ARCHITECTURE
11019 Perdido Road, Suite C
Baton Rouge, Louisiana 70810
Office: 225-412-4855
www.wtd-architecture.com

MKE
ARCHITECTS
MKE ARCHITECTS
9800 Airline Highway, Suite 217
Baton Rouge, Louisiana 70816
Office: 225-412-0046
www.mkearchitects.com

Key Plan:
Consultants:

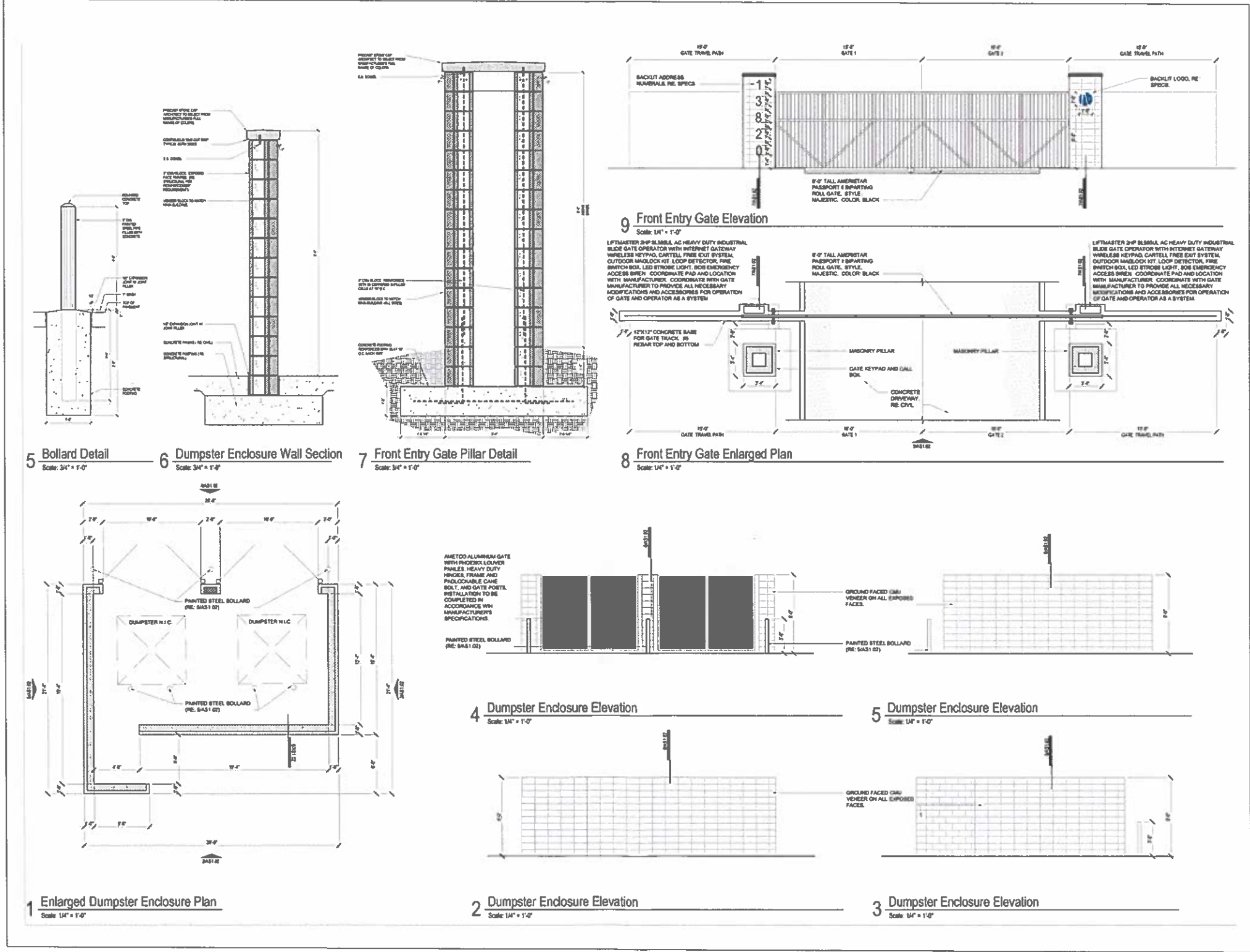
FOX-NESBIT
BATON ROUGE
NEW ORLEANS
225.383.4888
www.fox-nesbit.com
CA 2122 21221 C3021

The Newtron Group
New Campus Corporate Headquarters
13320 Airline Highway
Baton Rouge, LA 70817

Phase: Review
Date: 01-22-2024
Revisions:

STATE OF LOUISIANA
SCOTT W. HARRIS
LICENSED PROFESSIONAL ENGINEER
1/2/24

Professional Seal
Scale: 1" = 60'-0"
Site Description:
SITE PLAN



1 SITE DETAILS
Scale: NOT TO SCALE - LISTED SCALES ARE VOID

WTD
ARCHITECTURE
WTD ARCHITECTURE
11019 Perkins Road, Suite C
Baton Rouge, Louisiana 70810
Office: 225-412-4855
www.wtd-architecture.com

MKE
MKE ARCHITECTS
MKE ARCHITECTS
9800 Airline Highway, Suite 217
Baton Rouge, Louisiana 70816
Office: 225-412-0048
www.mkearchitects.com

Key Plan:
Coordinates:

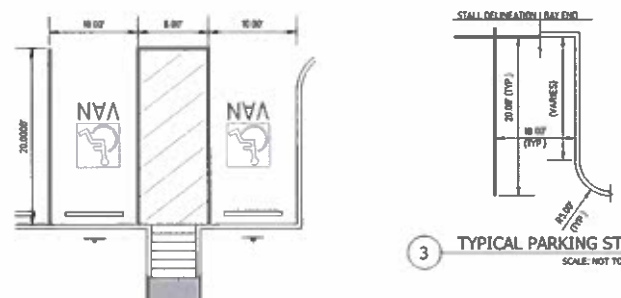
FOX NESBIT
BATON ROUGE 225.280.6896
NEW ORLEANS www.fox-nesbit.com
O 2023 11221 C0021

The Newtron Group
New Campus Corporate Headquarters
1320 Julia Highway
Baton Rouge, LA 70817

Phase: Review
Date: 01-02-2024
Revisions:

Professional Seal
Scale: 1" = 60'-0"
Site Description:
DETAILS

1/2/24



2 TYPICAL ADA PARKING STALL LAYOUT
SCALE: NOT TO SCALE

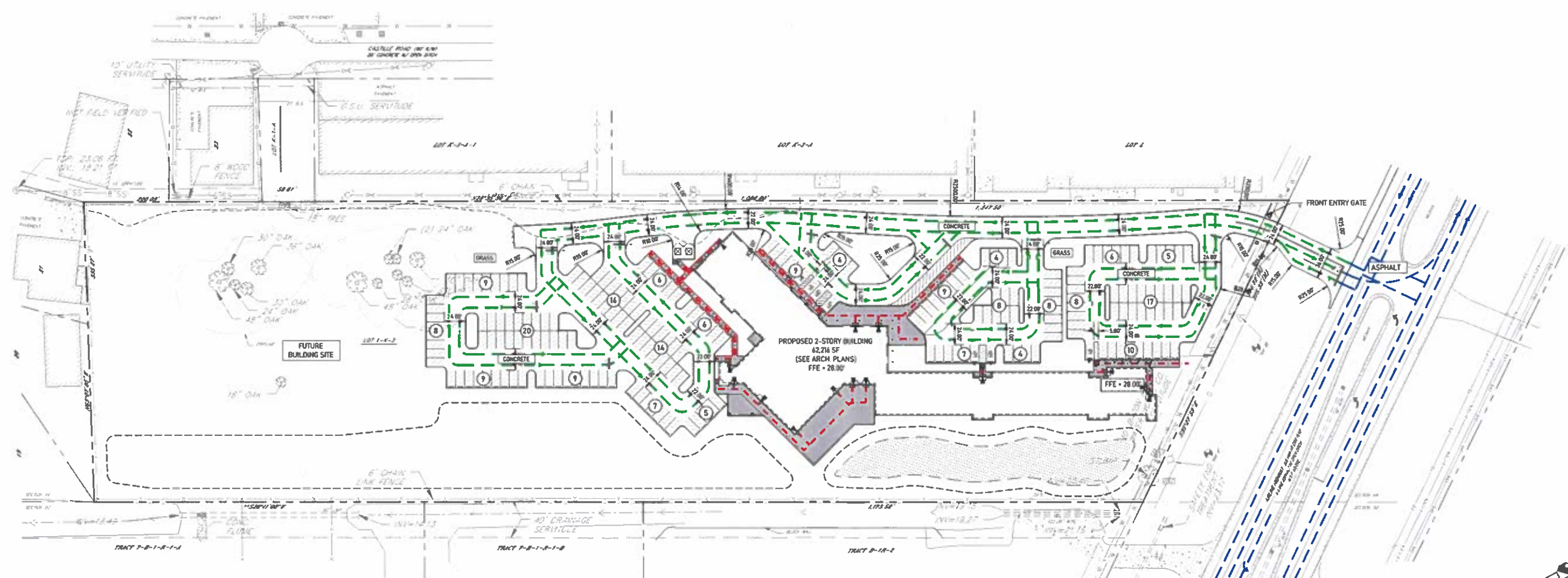
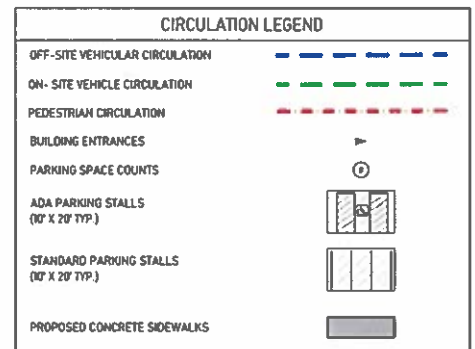


3 TYPICAL PARKING STALL
SCALE: NOT TO SCALE

PARKING SUMMARY TABLE							
PROPOSED LAND USE	CHARACTER AREA	REQD PARKING RATIO	PROPOSED GFA	# OF STALLS REQD	# OF STALLS PROVIDED	# OF ADA STALLS REQD	# OF ADA STALLS PROVIDED
OFFICE	SUBURBAN	1 STALL PER 300SF	42,216 SF	141 STALLS	141 STALLS	7 STALLS	7 STALLS

CIRCULATION PLAN NOTES:

1. REQUIRED PARKING RATIO TAKEN FROM TABLE 17-A OF THE CURRENT UNIFIED DEVELOPMENT CODE FOR EAST BATON ROUGE PARISH. CHARACTER AREA: SUBURBAN.
2. NO STREETS ALONG THE PROJECT SITE'S FRONTAGE ARE INCLUDED IN THE MOVEBR PLAN.
3. NO PROPOSED DRIVES OR SIDEWALKS ON THE PROJECT SITE ARE PROPOSED FOR PUBLIC OWNERSHIP OR MAINTENANCE.
4. PROPOSED DRIVE AND PARKING AISLES WILL CONSIST OF CONCRETE.
5. ALL PROPOSED SIGNAGE & PAVEMENT STRIPING SHALL CONFORM TO THE CURRENT EDITION OF THE MUTCD.



1 CIRCULATION PLAN
Scale: 1" = 60'

WTD
ARCHITECTURE
WTD ARCHITECTURE
11019 Perkins Road, Suite C
Baton Rouge, Louisiana 70810
Office: 225-412-4855
www.wtd-architecture.com

MKE
ARCHITECTS
MKE ARCHITECTS
9800 Airline Highway, Suite 217
Baton Rouge, Louisiana 70816
Office: 225-412-0048
www.mkearchitects.com

Consultants:
FOX NESBIT
BATON ROUGE 225.283.8995
NEW ORLEANS www.foxnesbit.com
2023 21221 C0211

The Newtron Group
New Campus Corporate Headquarters
1330 Airline Highway
Baton Rouge, LA 70817

Phase: Review
Date: 01-02-2024
Revisions:

Professional Seal
Scale: 1" = 60'-0"
Site Description:
CIRCULATION PLAN



LANDSCAPE ORDINANCE CALCULATIONS

BATON ROUGE UNIFIED DEVELOPMENT CODE - CHAPTER 18
 LOT 1-X-2, LAND USE - OFFICE

LANDSCAPE AREA
 10% OF THE DEVELOPED SITE AREA SHALL BE LANDSCAPE AREA.

DEVELOPED SITE AREA = 9.7 ACRES x 10%

REQUIRED: 42,367 SF LANDSCAPE AREA
 PROVIDED: 259,618 SF LANDSCAPE AREA

BUFFER YARD SCREEN

AS REQUIRED BY LAND USE OF SUBJECT SITE AND ADJACENT PROPERTIES

A. NORTHEAST: STREET FRONTAGE (SEE STREET YARD REQUIREMENTS)

REQUIRED: N/A
 PROVIDED: N/A

B. NORTHWEST: OFFICE ADJACENT UNDEVELOPED (L3 BUFFER), LIGHT INDUSTRIAL (L3 BUFFER), HEAVY COMMERCIAL (L3 BUFFER), LIGHT COMMERCIAL (L2 BUFFER)

15FT @ L3 (1 CLASS A PER 40LF) = 815 LF/40 = 21 CLASS A OR 42 CLASS B TREES

REQUIRED: 6' SCREEN & 21 CLASS A TREES OR 42 CLASS B TREES
 PROVIDED: 6' PRIVACY FENCE & 21 CLASS A TREES

10FT @ L2 (1 CLASS A PER 40LF) = 533 LF/40 = 14 CLASS A OR 28 CLASS B TREES

REQUIRED: 3' SCREEN & 14 CLASS A TREES OR 28 CLASS B TREES
 PROVIDED: 6' PRIVACY FENCE & 14 CLASS A TREES

C. SOUTHWEST: OFFICE ADJACENT LIGHT COMMERCIAL (L2 BUFFER)

10FT @ L2 (1 CLASS A PER 40LF) = 335 LF/40 = 9 CLASS A OR 18 CLASS B TREES

REQUIRED: 3' SCREEN & 9 CLASS A OR 18 CLASS B TREES
 PROVIDED: 6' PRIVACY FENCE & 9 CLASS A TREES

D. SOUTHEAST: OFFICE ADJACENT LIGHT INDUSTRIAL (L3 BUFFER)

15FT @ L3 (1 CLASS A PER 40LF) = 1174 LF/40 = 30 CLASS A OR 60 CLASS B TREES

REQUIRED: 6' SCREEN & 30 CLASS A OR 60 CLASS B TREES
 PROVIDED: 6' PRIVACY FENCE & 30 CLASS A TREES

STREET YARD

A. CONTINUOUS 3H SCREEN REQUIRED BETWEEN SIDEWALK AND PARKING

REQUIRED SCREEN: NONE- NO EXISTING SIDEWALK

B. (1) CLASS A TREE PER 40 LINEAR FEET OR EQUIVALENT

375 LF OF FRONTAGE/40 LF = 10 CLASS A TREES OR 20 CLASS B TREES

REQUIRED TREES: 10 CLASS A TREES OR 20 CLASS B TREES
 PROVIDED: 10 CLASS A TREES

NOTE:
 LANDSCAPE ARCHITECT SHALL INSPECT
 LANDSCAPING FOLLOWING INSTALLATION TO
 CERTIFY COMPLIANCE WITH APPROVED PLAN.

LANDSCAPE ORDINANCE STANDARDS

1. ALL LANDSCAPING SHALL BE INSTALLED IN ACCORDANCE WITH THE RULES OF GOOD ARBORICULTURAL PRACTICE AS SET FORTH BY THE ARBORICULTURE AND IN THE LOUISIANA NURSERYMAN'S MANUAL FOR THE ENVIRONMENTAL HORTICULTURE INDUSTRY, LATEST EDITION, AS PUBLISHED BY THE LOUISIANA NURSERY AND LANDSCAPE ASSOCIATION, AND CURRENTLY IN EFFECT AT THE TIME OF SUCH WORK.

2. PLANT MATERIAL SHALL BE TRUE TO NAME, VARIETY AND SIZE AND SHALL CONFORM TO ALL APPLICABLE PROVISIONS OF THE AMERICAN STANDARDS FOR NURSERY STOCK, LATEST EDITION. ALL LANDSCAPING SHALL BE INSTALLED IN A SOUND MANNER AND IN ACCORDANCE WITH ACCEPTED STANDARDS OF THE LOUISIANA NURSERYMAN'S MANUAL FOR THE ENVIRONMENTAL HORTICULTURE INDUSTRY.

3. TREES AND SHRUBS SELECTED FOR PLANTING SHALL MEET THE MINIMUM REQUIREMENTS PROVIDED IN THE AMERICAN STANDARD FOR NURSERY STOCK, ANSI Z60.1, LATEST EDITION AS PUBLISHED BY THE AMERICAN NURSERY AND LANDSCAPE ASSOCIATION.

4. PLANT MATERIALS SHALL BE COLD HARDY FOR THE SPECIFIC LOCATION WHERE THEY ARE TO BE PLANTED.

5. PLANT MATERIALS SHALL BE ABLE TO SURVIVE ON NATURAL RAINFALL ONCE ESTABLISHED WITH NO LOSS OF HEALTH.

6. ALL PLANT HEIGHTS SHALL BE MEASURED FROM THE TOP OF THE ROOT BALL TO THE TIP OF THE HIGHEST BRANCH.

7. CLASS "A" TREES AND STREET YARD TREES:

7.1. ALL SINGLE TRUNK TREES SHALL HAVE A MINIMUM TWO-INCH CALIPER AND MEASURE A MINIMUM OF EIGHT FEET TALL AT TIME OF PLANTING.

7.2. MULTI-TRUNK TREES SHALL HAVE MAIN STEMS WITH A MINIMUM ONE AND ONE-HALF INCH CALIPER PER TRUNK, A MINIMUM OF THREE MAIN STEMS, AND MEASURE A MINIMUM OF TEN FEET TALL AT TIME OF PLANTING.

8. CLASS "B" TREES:

8.1. ALL SINGLE TRUNK TREES SHALL HAVE A MINIMUM ONE AND ONE-HALF INCH CALIPER AND MEASURE A MINIMUM OF EIGHT FEET TALL AT TIME OF PLANTING.

8.2. MULTI-TRUNK TREES SHALL HAVE MAIN STEMS WITH A MINIMUM ONE-INCH CALIPER PER TRUNK, A MINIMUM OF THREE MAIN STEMS, AND MEASURE A MINIMUM OF EIGHT FEET TALL AT TIME OF PLANTING.

9. CLASS "C" TREES:

9.1. ALL SINGLE TRUNK TREES SHALL HAVE A MINIMUM ONE AND ONE-HALF INCH CALIPER AND MEASURE A MINIMUM OF FIVE FEET TALL AT TIME OF PLANTING.

9.2. MULTI-TRUNK TREES SHALL HAVE MAIN STEMS WITH A MINIMUM ONE-INCH CALIPER PER TRUNK, A MINIMUM OF THREE MAIN STEMS, AND MEASURE A MINIMUM OF FIVE FEET TALL AT TIME OF PLANTING.

10. SHRUBS:

10.1. SHRUBS SHALL BE A MINIMUM OF 20 INCHES IN HEIGHT IN A MINIMUM THREE GALLON CONTAINER, UNLESS THEY ARE PLANTED AS A SCREEN FOR AN L3 BUFFER OR A PARKING LOT. THE MAXIMUM SPACING FOR 20 INCH HIGH SHRUBS SHALL BE 36 INCHES ON CENTER.

10.2. SHRUBS PLANTED AS AN L3 BUFFER SHALL BE A MINIMUM OF FOUR FEET IN HEIGHT.

10.3. WHEN PLANTED AS AN L3 BUFFER, THE MAXIMUM SPACING FOR FOUR-FOOT HIGH SHRUBS SHALL BE 36 INCHES ON CENTER.

10.4. SPACING FOR OTHER REQUIRED PLANT MATERIAL SHALL BE DETERMINED BY THE DEVELOPMENT DIRECTOR.

11. IRRIGATION AND WATERING STANDARD:

11.1. A WATER SOURCE SHALL BE SUPPLIED WITHIN TWO HUNDRED (200) FEET OF ALL PLANTING BEDS OR A PERMANENT IN-GROUND IRRIGATION SYSTEM SHALL BE PROVIDED.

12. MAINTENANCE:

12.1. PROPERTY OWNERS AND THEIR AGENTS SHALL BE RESPONSIBLE FOR PROVIDING, PROTECTING, AND MAINTAINING ALL REQUIRED LANDSCAPING IN A HEALTHY AND GROWING CONDITION, REPLACING DEAD OR DAMAGED VEGETATION, AND KEEPING ALL LANDSCAPED AREAS FREE OF REFUSE AND DEBRIS.

12.2. PROPERTY OWNERS AND THEIR AGENTS SHALL BE RESPONSIBLE FOR PROVIDING, PROTECTING, AND MAINTAINING ALL LANDSCAPING WITHIN THE ADJUTING RIGHT-OF-WAY.

GENERAL PLANTING NOTES

1. LOCATE ALL UTILITIES ON SITE PRIOR TO COMMENCING WORK. ANY DAMAGE DONE TO EXISTING OR NEW UTILITIES SHALL BE REPAIRED OR REPLACED AT NO ADDITIONAL COST TO OWNER.

2. PLANTS SHALL BE WELL FORMED, NO. 1 GRADE OR BETTER NURSERY STOCK AND SHALL MEET THE APPLICABLE STANDARDS NOTED HEREIN AND SHALL BE SUBJECT TO REJECTION BY THE LANDSCAPE ARCHITECT.

3. STAKE OUT ALL TREE LOCATIONS FOR APPROVAL BY THE OWNER'S REPRESENTATIVE PRIOR TO INSTALLATION. LOCATE ALL TREES AS SHOWN ON PLAN.

4. COORDINATE WORK WITH THE WORK OF OTHER TRADES ON THE SITE.

5. ENTIRE SITE SHALL BE GRADED TO FINISH GRADE PRIOR TO SCHEDULING PLANTING INSTALLATION.

6. PLANTS SHALL BE SPECIMEN QUALITY, FULL POT AND HEAD, SYMMETRICAL FOLIAGE AND BRANCHING STRUCTURE. SHRUBS SHALL BE FULL TO GROUND.

7. PLANT MATERIAL OF THE SAME SPECIES SHALL BE MATCHING IN CHARACTER AND SIZE, OBTAINED FROM THE SAME SOURCE.

8. ANY CHANGES IN PLANT MATERIAL SIZE, QUANTITY, SPECIES OR VARIETY MUST BE APPROVED BY THE OWNER AND/OR LANDSCAPE ARCHITECT PRIOR TO INSTALLATION.

9. INSTALLATION MUST BE COMPLIANT WITH LANDSCAPE ORDINANCE STANDARDS.

PLANT SCHEDULE

SYMBOL	QTY	BOTANICAL NAME	COMMON NAME	CONT.	HT.	CLASS
	2	Acer palmatum 1.5" cal.	Japanese Maple	30 gal	7' ht	A
	13	Acer rubrum 'HOSR' TM 2" cal.	Summer Red Maple	30 gal	8' ht	A
	16	Magnolia virginiana australis 1.5" cal.	Sweetbay Magnolia	30 gal	8' ht	B
	54	Quercus phellos 2" cal.	Willow Oak	30 gal	8' ht	A
	3	Quercus virginiana 4"-5" cal.	Southern Live Oak	100 gal	10' ht	A
	9	Taxodium ascendens 2" cal.	Pond Cypress	30 gal	8' ht	A
	26	Ulmus americana 'Princeton' 2" cal.	Princeton American Elm	30 gal	8' ht	A

SYMBOL	QTY	BOTANICAL NAME	COMMON NAME	CONT.	HT.	CLASS
	2,158	Carex cherokeensis	Cherokee Sedge	1 gal	12" ht	
	316	Distylum x 'PIIDIST-III' TM	Coppertone Distylum	3 gal	24" ht	
	14	Distylum x 'PIIDIST-IV' TM	Linebacker Distylum	15 gal	36" ht	
	485	Juniperus horizontalis 'Andorra'	Andorra Juniper	3 gal	12" ht	
	34	Podocarpus macrophyllus	Japanese Yew	15 gal	36" ht	
	56	Rosa x 'Meisweddom'	Sweet Drift Rose	3 gal	12" ht	

SYMBOL	QTY	BOTANICAL NAME	COMMON NAME	CONT.	HT.	CLASS	SPACING
	177,056 sf	Cynodon dactylon	Bermuda Grass Seed	Hydromulch			
	54,855 sf	Cynodon dactylon	Bermuda Grass Sod	Sod			
	180	Liriope muscari 'Big Blue'	Big Blue Liriope	1 gal.	6" ht		12" o.c.
	185	Seasonal Color	Annuals	4" pot			8" o.c.

WTD ARCHITECTURE
 WTD ARCHITECTURE
 11019 Perkins Road, Suite C
 Baton Rouge, Louisiana 70810
 Office: 225-412-4855
 www.wtd-architecture.com

MKE ARCHITECTS
 MKE ARCHITECTS
 9800 Airline Highway, Suite 217
 Baton Rouge, Louisiana 70816
 Office: 225-412-0048
 www.mkearchitects.com

Consultants:

ANGEL'S LANDSCAPE GROUP
 14175 75th Street
 P.O. Box 84715
 Baton Rouge, LA 70817

The Newtron Group
 New Campus Corporate Headquarters
 13250 Airline Highway
 Baton Rouge, LA 70817

Phase: Bid Documents
 Date: 10-26-23
 Revisions:

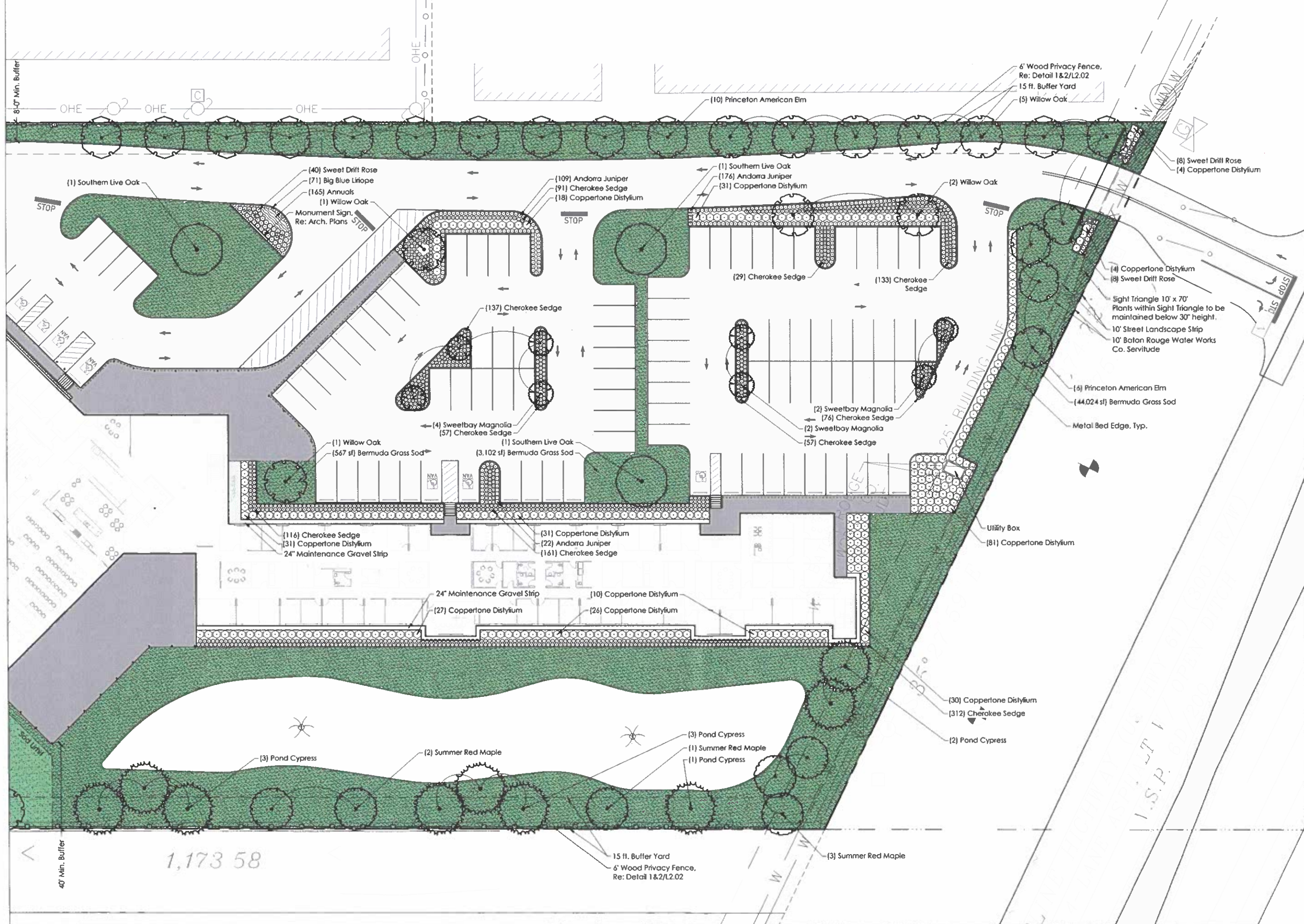


Professional Seal
 Scale: 1" = 60'-0"
 Site Description:
 Landscape Site Plan

L1.00

K-3-A

LOT L



WTD ARCHITECTURE
 11019 Perkins Road, Suite C
 Baton Rouge, Louisiana 70810
 Office: 225-412-4855
 www.wtd-architecture.com



MKE ARCHITECTS
 9800 Airline Highway, Suite 217
 Baton Rouge, Louisiana 70816
 Office: 225-412-0048
 www.mkearchitects.com

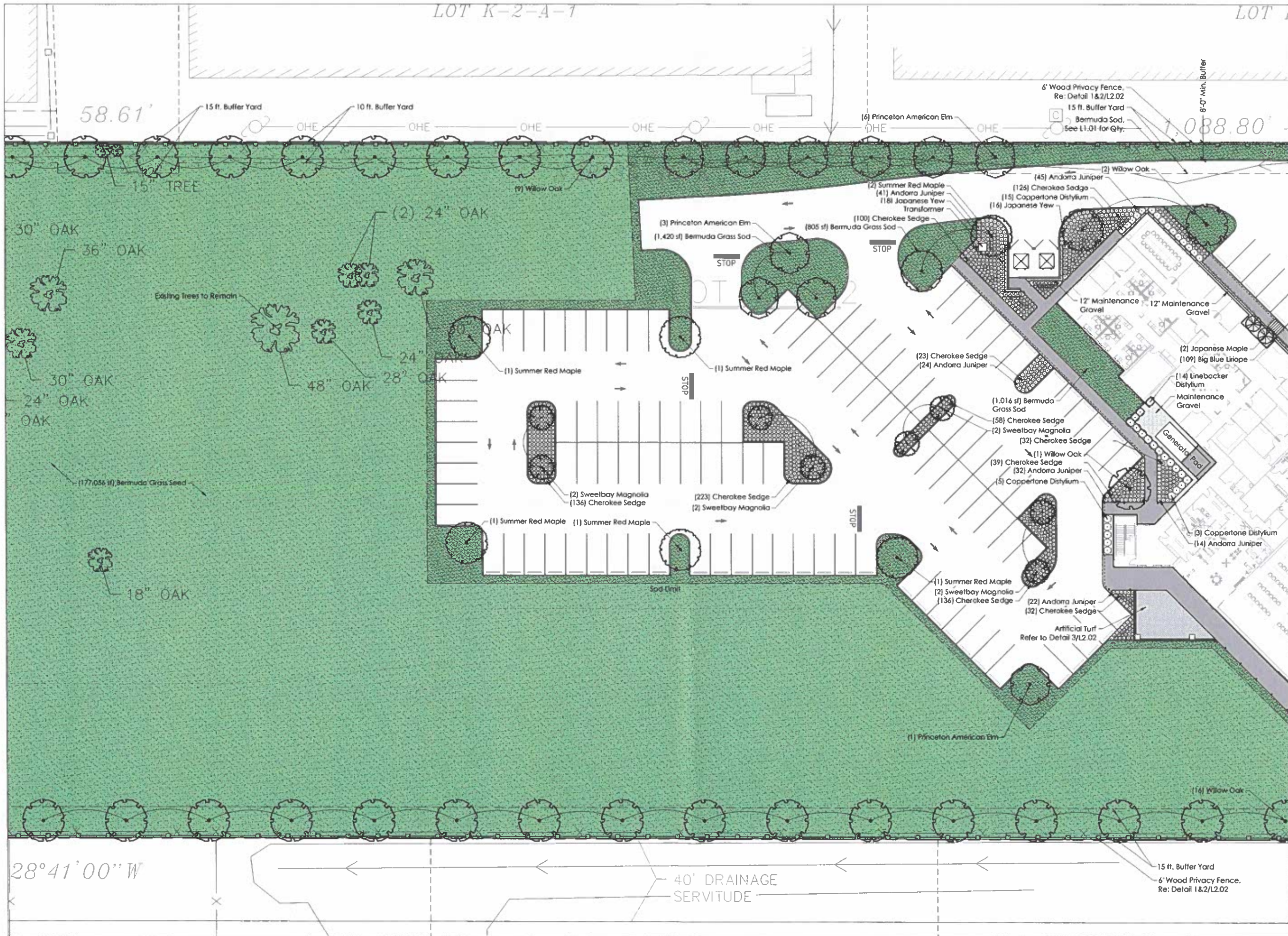


The Newtron Group
 New Campus Corporate Headquarters
 Baton Rouge, LA 70817

Phase: Bid Documents
 Date: 10-26-23
 Revisions:



Professional Seal
 Scale: 1" = 20'-0"
 Site Description:
Planting Plan



WTD ARCHITECTURE
11019 Perkins Road, Suite C
Baton Rouge, Louisiana 70810
Office: 225-412-4855
www.wtd-architecture.com



MKE ARCHITECTS
9800 Airline Highway, Suite 217
Baton Rouge, Louisiana 70816
Office: 225-412-0048
www.mkearchitects.com



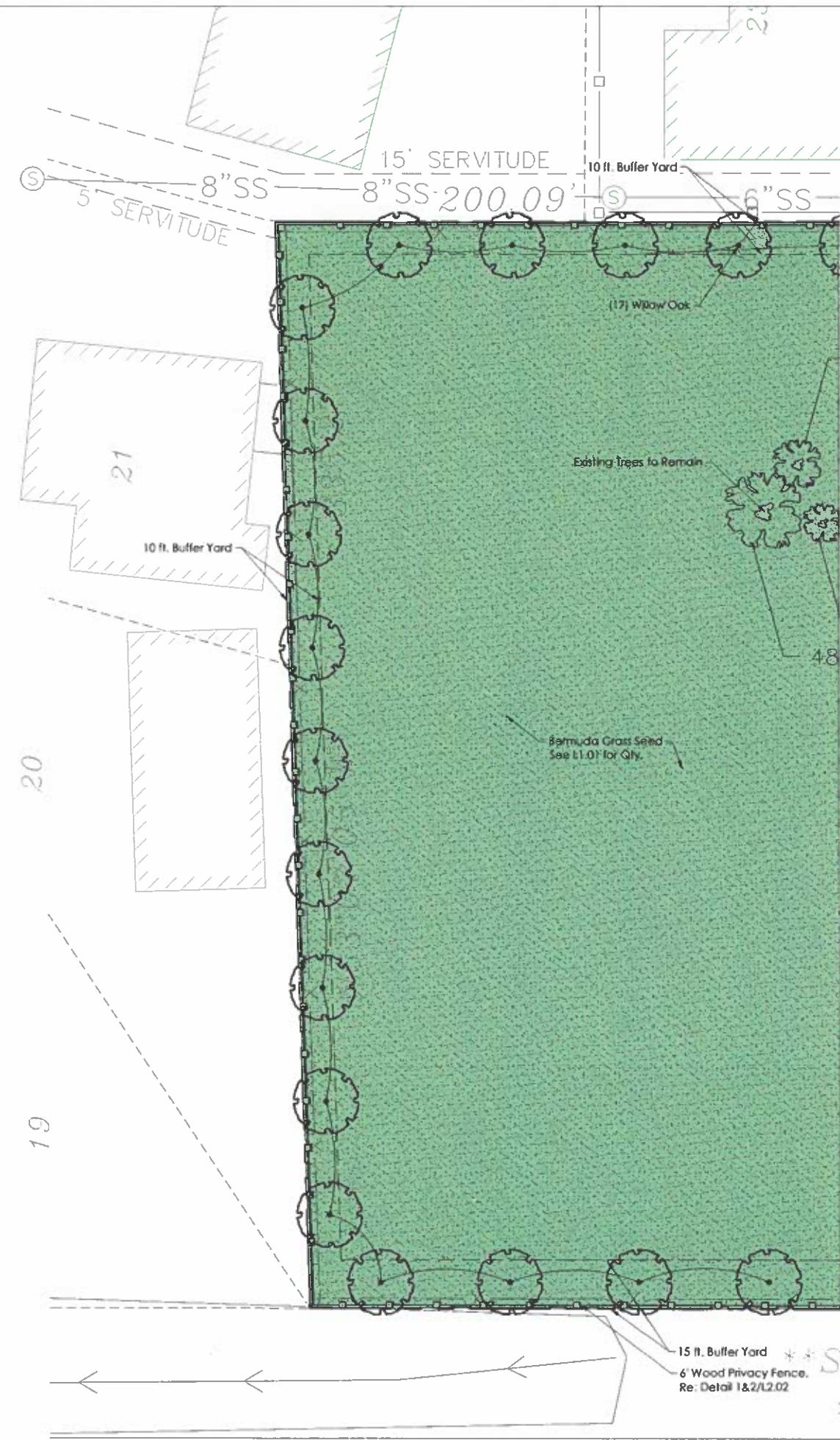
The Newtron Group
New Campus Corporate Headquarters
1820 Airline Highway
Baton Rouge, LA 70817

Phase: Bid Documents
Date: 10-26-23
Revisions:



Professional Seal
Scale: 1" = 20'-0"
Site Description:
Planting Plan

L1.02



WTD ARCHITECTURE
 11019 Perkins Road, Suite C
 Baton Rouge, Louisiana 70810
 Office: 225-412-4823
 www.wtdarchitects.com

MKE ARCHITECTS
 MKE ARCHITECTS
 9800 Airline Highway, Suite 217
 Baton Rouge, Louisiana 70816
 Office: 225-412-0048
 www.mkearchitects.com

Consultants:

ANGELLO'S LANDSCAPE GROUP
 285
 1st. 222 752 5274
 P.O. Box 86715
 Baton Rouge, LA 70817

The Newtron Group
 New Campus Corporate Headquarters
 13201 Airline Highway
 Baton Rouge, LA, 70817

Phase: Bid Documents
 Date: 10-26-23
 Revisions:



Professional Seal
 Scale: 1" = 20'-0"
 Site Description:
Planting Plan

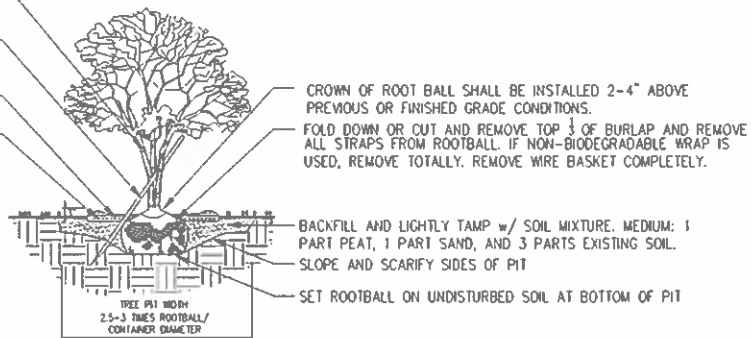
North
L1.03

CLEAR TRUNK TO HEIGHT SPECIFIED. BRANCHES TO BE REMOVED SHALL BE PRUNED ACCORDING TO CERTIFIED ARBORIST STANDARDS.

SET STAKE (WOODEN OR IRON) AT APPROX. 45° ANGLE FIRMLY INTO SUBGRADE (MIN 18" DEPTH)

MIN. 3" MULCH LAYER TO BE PLACED OVER TREES (TYP.)

FORM RAISED SOIL RING w/ MULCH (3" CONTINUOUS) AROUND TREE PIT.



NOTES:

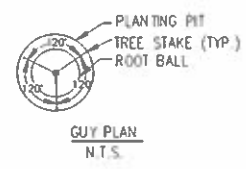
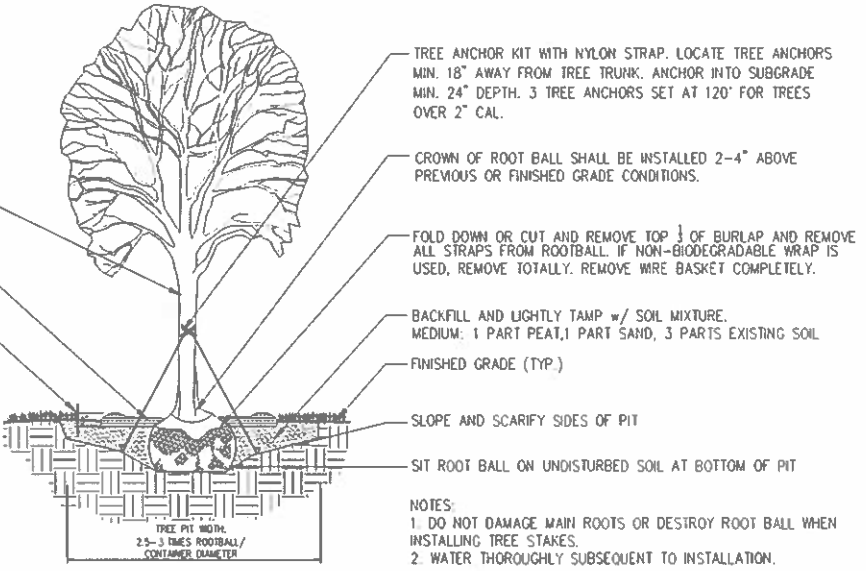
- DO NOT DAMAGE MAIN ROOTS OR DESTROY ROOT BALL WHEN INSTALLING TREE STAKES.
- WATER THOROUGHLY SUBSEQUENT TO INSTALLATION.
- NYLON TIE TO BE REMOVED AT END OF GUARANTEE PERIOD.
- TREE(S) SHALL BE SET PLUMB.

1 MULTI-TRUNK TREE PLANTING

CLEAR TRUNK TO HEIGHT SPECIFIED. BRANCHES TO BE REMOVED SHALL BE PRUNED ACCORDING TO CERTIFIED ARBORIST STANDARDS.

MIN. 3" MULCH LAYER TO BE PLACED OVER TREES (TYP.)

FORM RAISED SOIL RING w/ MULCH (3" CONTINUOUS) AROUND TREE PIT.



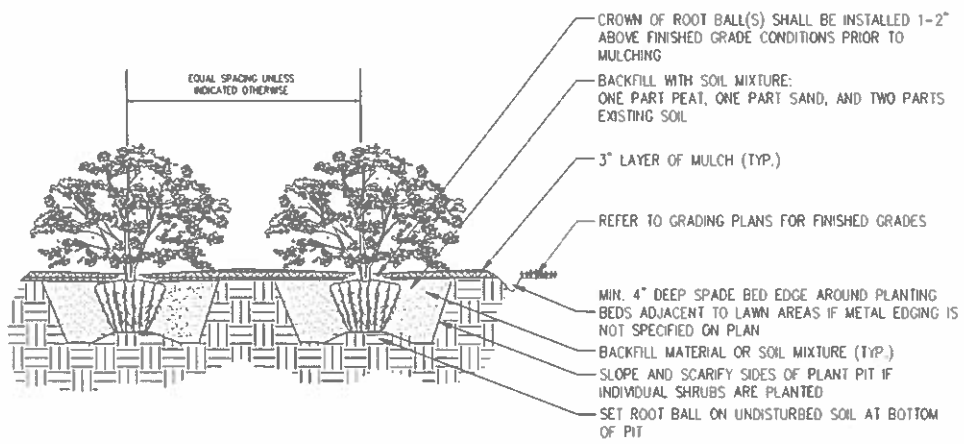
NOTES:

- DO NOT DAMAGE MAIN ROOTS OR DESTROY ROOT BALL WHEN INSTALLING TREE STAKES.
- WATER THOROUGHLY SUBSEQUENT TO INSTALLATION.
- GUY WIRE/TIE TO BE REMOVED AT END OF GUARANTEE PERIOD.
- TREE(S) SHALL BE SET PLUMB.
- TREES LESS THAN 3" DIA. SHALL BE STAKED.

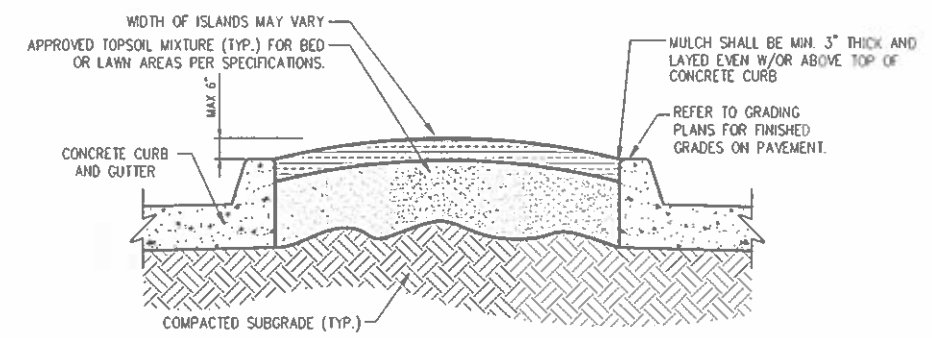
2 SINGLE-TRUNK TREE PLANTING

NOTES:

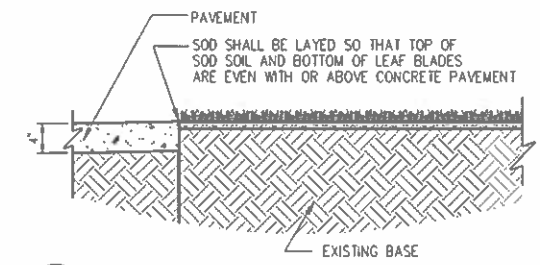
- WHERE SHRUBS APPEAR IN BED AREA, 3" OF MULCH SHALL BE SPREAD OVER THE ENTIRE AREA WITHIN THE BED AS INDICATED ON THE PLANS.
- DO NOT PRUNE SHRUBS BEFORE ACCEPTANCE.
- CAREFULLY REMOVE CONTAINER FROM ROOT BALL USED FOR SHRUB(S). ANY BROKEN OR CRUMBLING ROOT BALL(S) WILL BE REJECTED.
- IF SHRUB IS B&B, REMOVE BURLAP FROM TOP 1/3 OF ROOT BALL OR COMPLETELY REMOVE BURLAP IF SOILS ARE POORLY DRAINED.
- SCARIFY ROOTBALL IF ROOT BOUND IN CONTAINER PER HORTICULTURE STANDARDS.



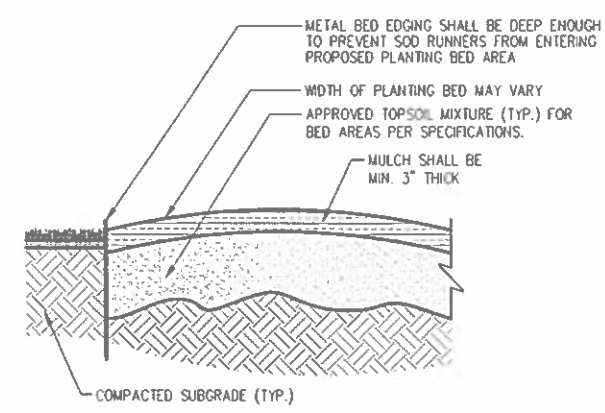
3 SHRUB PLANTING



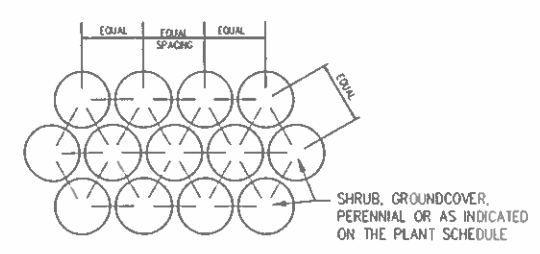
4 ISLAND MOUNDING (PLANTING APPLICATION)
SCALE: N.T.S.



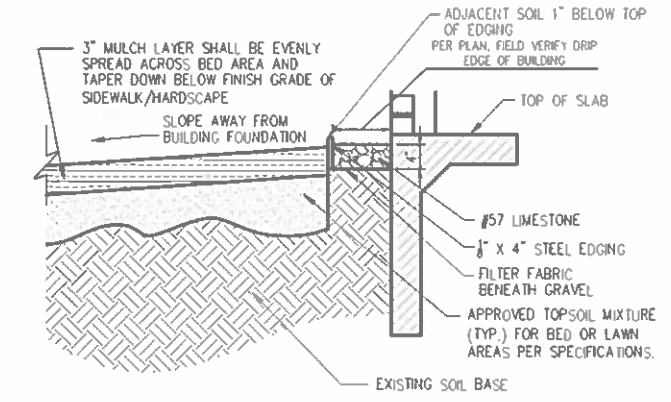
5 SOD TO PAVEMENT SECTION
SCALE: N.T.S.



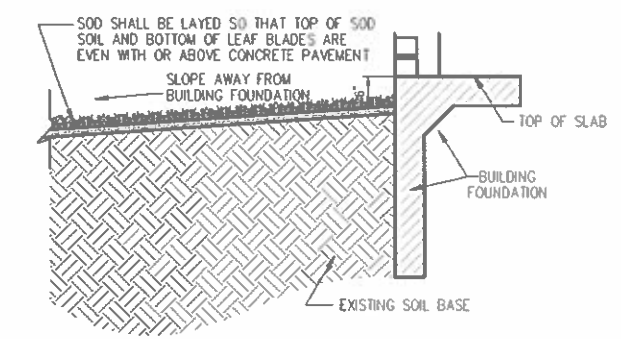
6 METAL BED EDGING
SCALE: N.T.S.



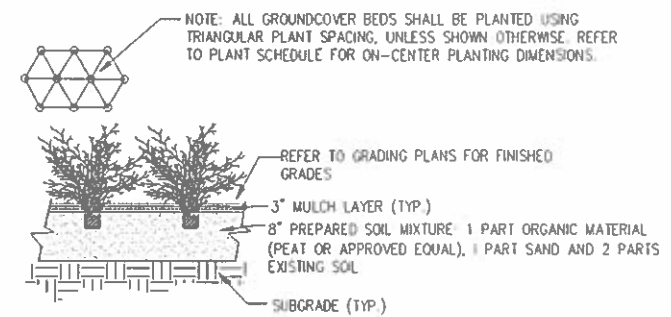
7 PLANT SPACING



8 TYPICAL SECTION - BUILDING / LANDSCAPE BED
SCALE: N.T.S.



9 TYPICAL SECTION - BUILDING / SODDED LAWN
SCALE: N.T.S.



10 GROUNDCOVER PLANTING
SCALE: N.T.S.

WTD ARCHITECTURE
WTD ARCHITECTURE
11019 Perkins Road, Suite C
Baton Rouge, Louisiana 70810
Office: 225-412-4855
www.wtd-architects.com

MKE ARCHITECTS
MKE ARCHITECTS
9800 Airline Highway, Suite 217
Baton Rouge, Louisiana 70816
Office: 225-412-1048
www.mkearchitects.com

Consultants:
ANGEL'S LANDSCAPE GROUP
1411 225.733.5274
P.O. Box 847/5
Baton Rouge, LA 70879

The Newtron Group
New Campus Corporate Headquarters
13820 Airline Highway
Baton Rouge, LA 70817

Phase: Bid Documents
Date: 10-26-23
Revisions:



Professional Seal
Scale: Per Detail
Bid Description: Landscape Details



WTD ARCHITECTURE
 WTD ARCHITECTURE
 11019 Perkins Road, Suite C
 Baton Rouge, Louisiana 70810
 Office: 225-412-4899
 www.wtd-architecture.com



MKE ARCHITECTS
 MKE ARCHITECTS
 9800 Airline Highway, Suite 217
 Baton Rouge, Louisiana 70816
 Office: 225-412-0548
 www.mkearchitects.com

Consultants:



Tel: 225.752.5276
 P.O. Box 98715
 Baton Rouge, LA 70879

The Newtron Group
 New Campus Corporate Headquarters
 12500 Airline Highway
 Baton Rouge, LA 70817

Phase: Bid Documents

Date: 10-26-23

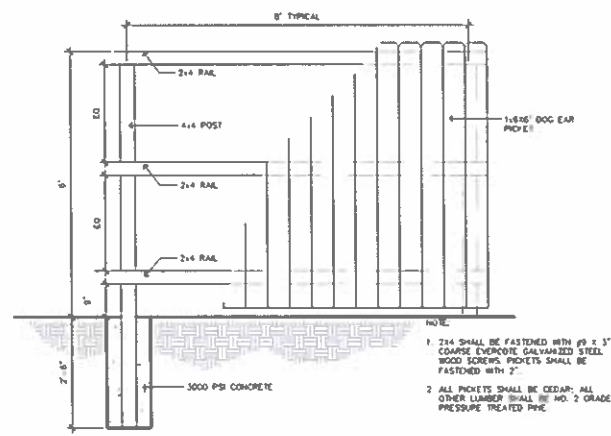
Revisions:



Professional Seal

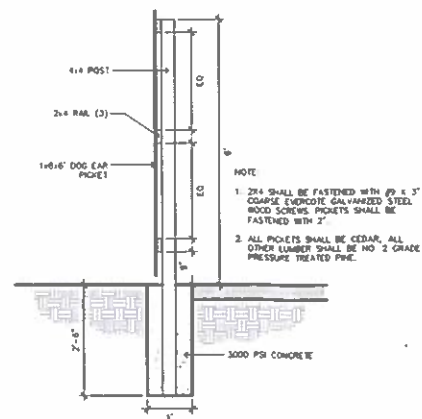
Scale: Per Detail

Site Description: Landscape Details



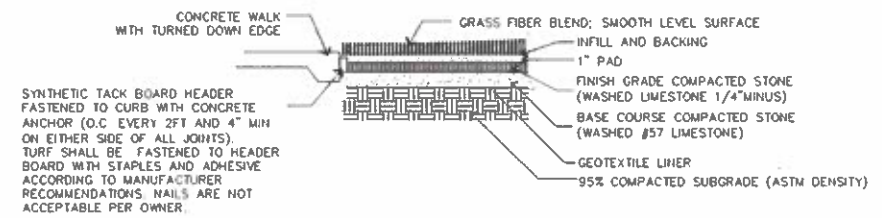
1 6' WOOD FENCE ELEVATION

SCALE: 1/2" = 1'-0"



2 6' WOOD FENCE SECTION

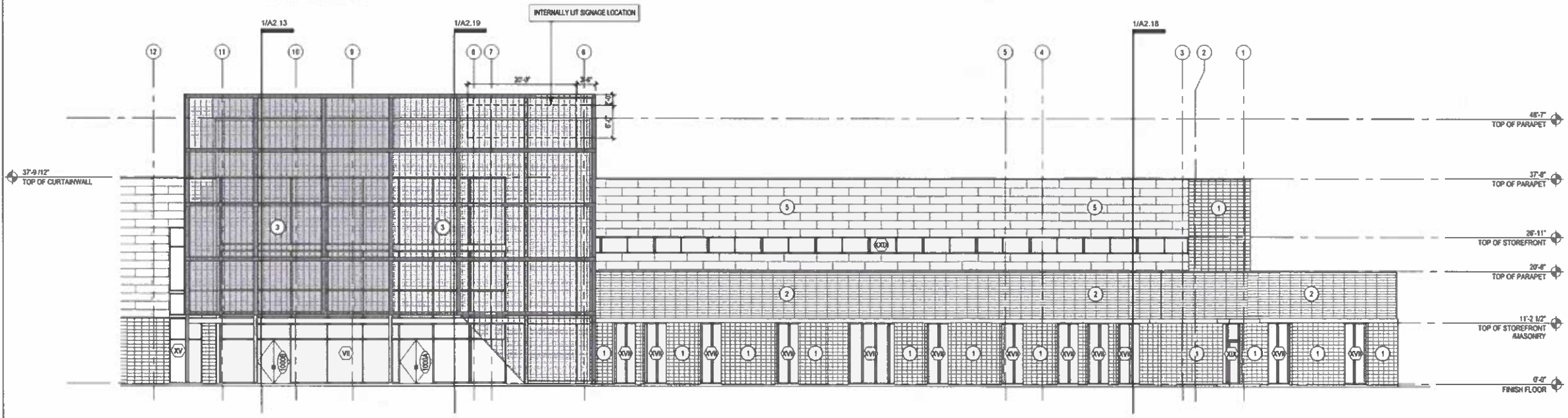
SCALE: 1/2" = 1'-0"



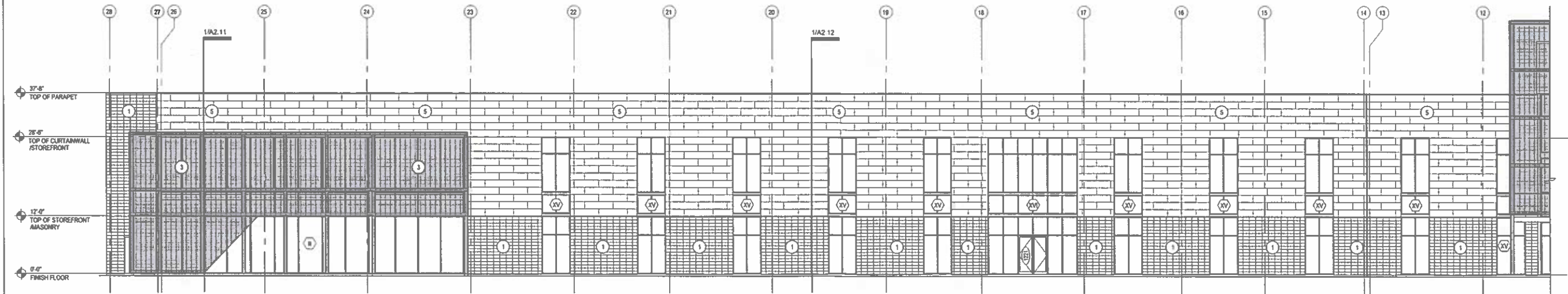
3 ARTIFICIAL TURF

SCALE: 1/2" = 1'-0"

NOTE: REFER TO SHEET A2.02 FOR CURTAIN WALL AND METAL PANEL LAYOUT AND CLARIFICATION

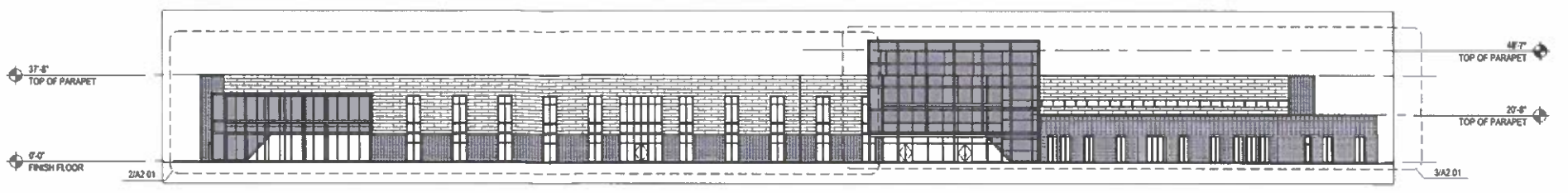


3 Enlarged West Elevation
Scale: 3/32" = 1'-0"



2 Enlarged West Elevation
Scale: 3/32" = 1'-0"

NOTE: REFER TO SHEET A2.02 FOR CURTAIN WALL AND METAL PANEL LAYOUT AND CLARIFICATION



1 West Elevation - Reference
Scale: 1/32" = 1'-0"

GENERAL NOTES:

FINISH COLOR SELECTION TO BE MADE BY ARCHITECT AT LATER DATE

CONTRACTOR TO PROVIDE ARCHITECT WITH PHYSICAL SAMPLES OF EACH FINISH FOR FINAL SELECTION

ADDRESS LETTERING

COLOR, SIZE, AND TEXT STYLE TO MEET ALL STATE AND LOCAL CODES

*CONTRACTOR TO PROVIDE ADDITIONAL FRAMING MEMBERS ABOVE STOREFRONTS WHERE THE ALUMINUM CANOPIES ARE TO BE MOUNTED. MOUNTING METHOD TO BE HIDDEN FROM PUBLIC VIEW.

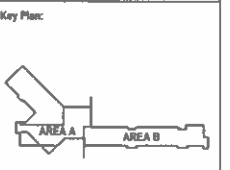
- EXTERIOR FINISH KEY:**
- 1 GROUND FACED CHU VEHNER
 - 2 MICHNA - NOVINARY - WALL PANEL
 - 3 HENDRICKS CORRUGATED METAL WINDOW SCREEN SYSTEM
 - 4 ALLUCABOND - WALL PANELS
 - 5 MICHNA - ARCHITECTURAL BLOCK-WALL PANEL
 - 6 MICHNA - ARCHITECTURAL BLOCK-WALL PANEL

WTD ARCHITECTURE

WTD ARCHITECTURE
11019 Perkins Road, Suite C
Baton Rouge, Louisiana 70810
Office: 225-412-4885
www.wtd-architecture.com

MKE ARCHITECTS

MKE ARCHITECTS
9800 Airline Highway, Suite 217
Baton Rouge, Louisiana 70816
Office: 225-412-0043
www.mkearchitects.com



Consultants:

The Newtron Group
New Campus Corporate Headquarters
13825 Airline Highway
Baton Rouge, LA 70817

Phase: Bid Documents
Date: 18-26-23
Revisions:

Professional Seal
Scale: 1/16" = 1'-0"
Bid Description:
Building Elevations

North
A2.01

GENERAL NOTES:

FINISH COLOR SELECTION TO BE MADE BY ARCHITECT AT LATER DATE

CONTRACTOR TO PROVIDE ARCHITECT WITH PHYSICAL SAMPLES OF EACH FINISH FOR FINAL SELECTION

ADDRESS LETTERING

COLOR, SIZE, AND TEXT STYLE TO MEET ALL STATE AND LOCAL CODES

* CONTRACTOR TO PROVIDE ADDITIONAL FRAMING MEMBERS ABOVE STOREFRONTS WHERE THE ALUMINUM CANOPIES ARE TO BE MOUNTED. MOUNTING METHOD TO BE HIDDEN FROM PUBLIC VIEW

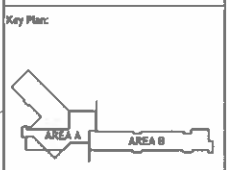
EXTERIOR FINISH KEY:

- 1 GROUND FACED CHALK VENEER
- 2 NICHEVA - NOVENARY - WALL PANEL
- 3 HENDRICKS CORRUGATED METAL WINDOW SCREEN SYSTEM
- 4 ALUCABOND - WALL PANELS
- 5 NICHEVA - ARCHITECTURAL BLOCK-WALL PANEL



WTD ARCHITECTURE
 11019 Perkins Road, Suite C
 Baton Rouge, Louisiana 70810
 Office: 225-412-4895
 www.wtd-architecture.com

MKE ARCHITECTS
 MIKE ARCHITECTS
 9800 Airline Highway, Suite 217
 Baton Rouge, Louisiana 70816
 Office: 225-412-0048
 www.mkearchitects.com



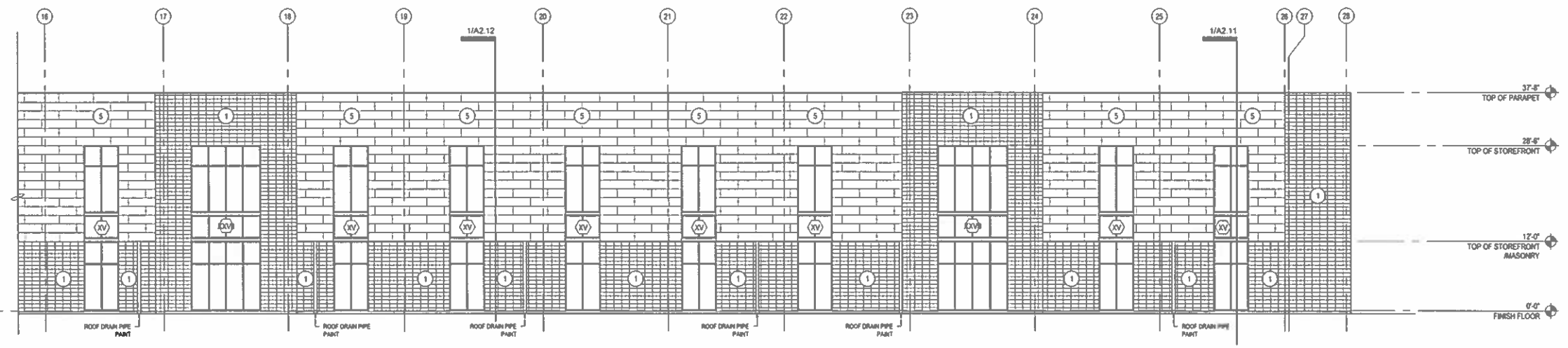
Consentants:

The Newtron Group
 New Campus Corporate Headquarters
 1320 Airline Highway
 Baton Rouge, LA 70817

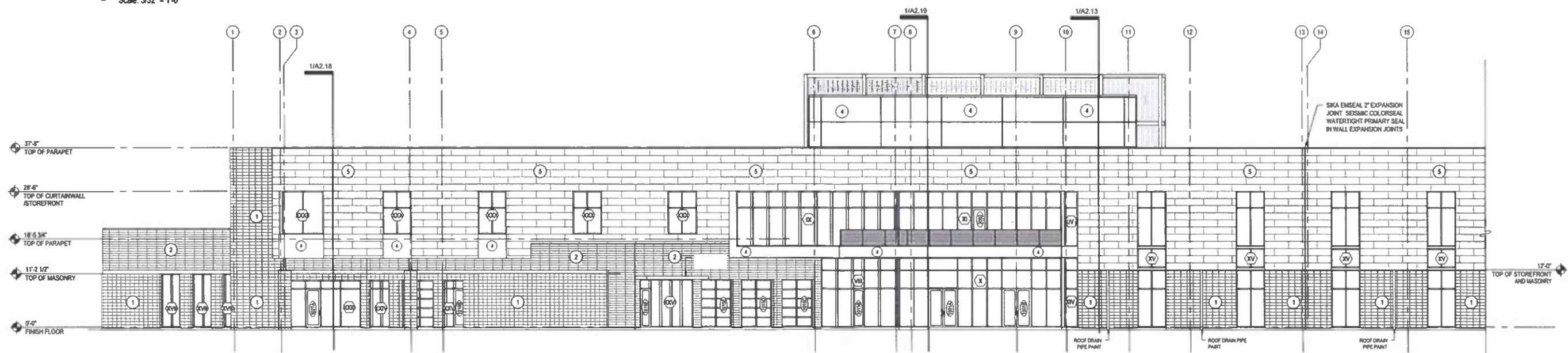
Phase: Bid Documents
 Date: 10-26-23
 Revisions:

Professional Seal
 Scale: 1/16" = 1'-0"
 SH Description:
 Building Elevations

North
A2.03



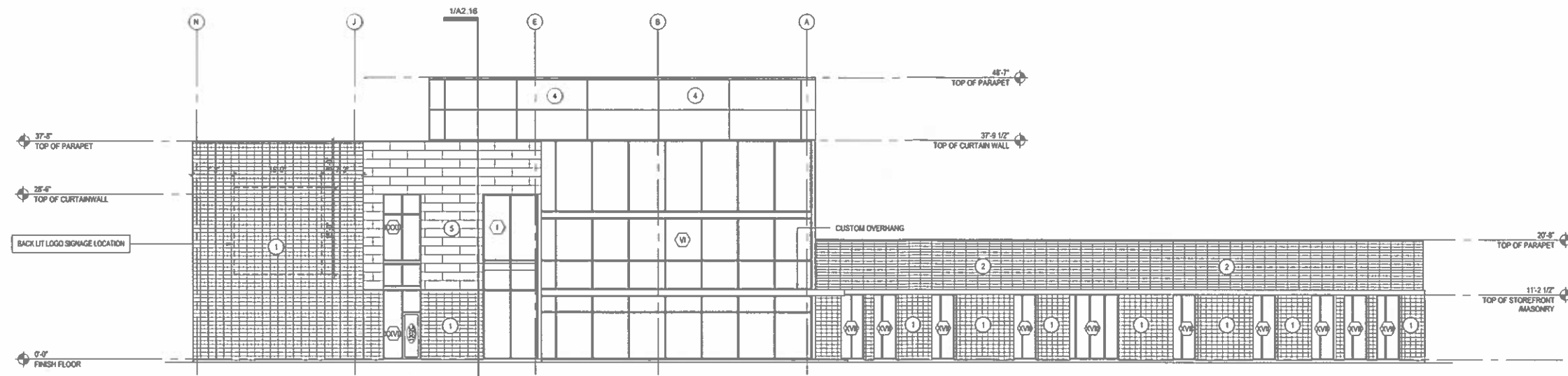
3 Enlarged East Elevation
 Scale: 3/32" = 1'-0"



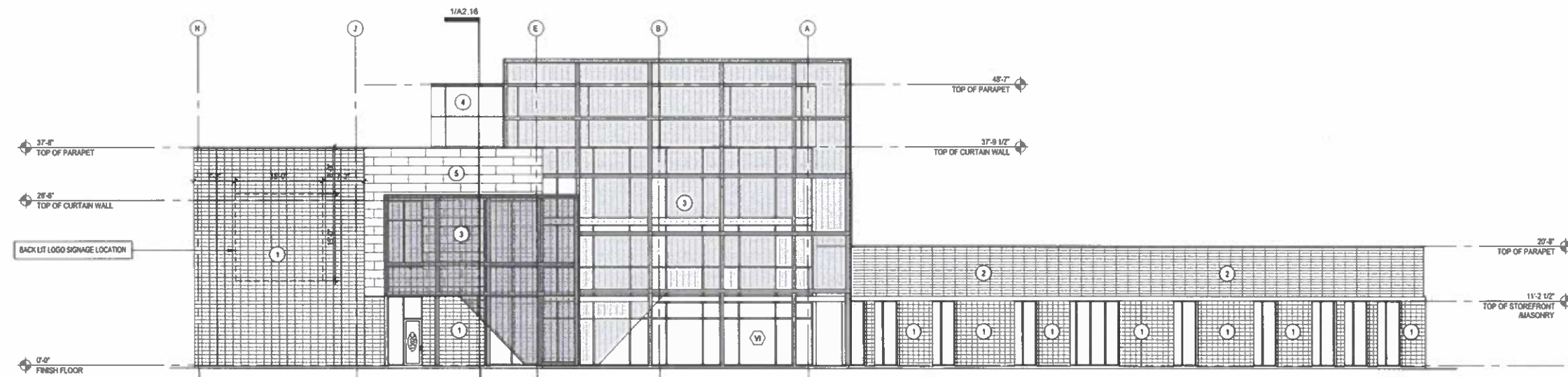
2 Enlarged East Elevation
 Scale: 3/32" = 1'-0"



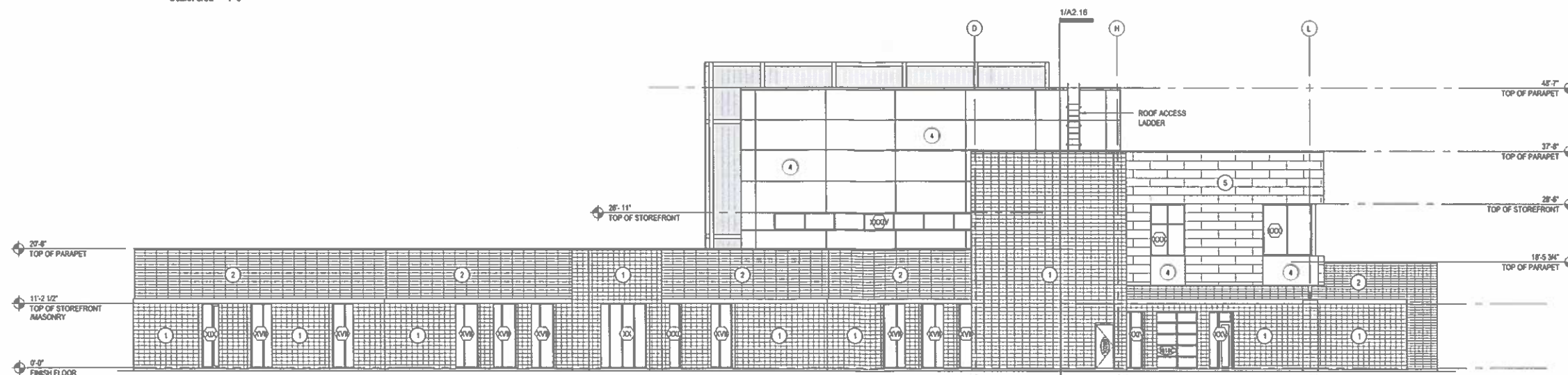
1 East Elevation - Reference
 Scale: 1/32" = 1'-0"



3 North Elevation - Minus Screen for Clarification
Scale: 3/32" = 1'-0"



2 North Elevation
Scale: 3/32" = 1'-0"



1 South Elevation
Scale: 3/32" = 1'-0"

GENERAL NOTES:

FINISH COLOR SELECTION TO BE MADE BY ARCHITECT AT LATER DATE

CONTRACTOR TO PROVIDE ARCHITECT WITH PHYSICAL SAMPLES OF EACH FINISH FOR FINAL SELECTION.

ADDRESS LETTERING

COLOR, SIZE, AND TEXT STYLE TO MEET ALL STATE AND LOCAL CODES

CONTRACTOR TO PROVIDE ADDITIONAL FRAMING MEMBERS ABOVE STOREFRONTS WHERE THE ALUMINUM CANOPIES ARE TO BE MOUNTED. MOUNTING METHOD TO BE HIDDEN FROM PUBLIC VIEW.

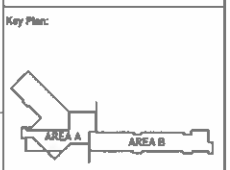
- EXTERIOR FINISH KEY:**
- 1 GROUND FACED CHALK VENEER
 - 2 NICHA - NOVENARY - WALL PANEL
 - 3 HENDRICKS CORRUGATED METAL WINDOW SCREEN SYSTEM
 - 4 ALUCABOND - WALL PANELS
 - 5 NICHA - ARCHITECTURAL BLOCK-WALL PANEL

WTD ARCHITECTURE

11019 Perkins Road, Suite C
Baton Rouge, Louisiana 70810
Office: 225-412-4855
www.wtd-architecture.com

MKE ARCHITECTS

9800 Airline Highway, Suite 217
Baton Rouge, Louisiana 70816
Office: 225-412-0048
www.mkearchitects.com



Consultants:

The Newtron Group
New Campus Corporate Headquarters
13020 Airline Highway
Baton Rouge, LA 70817

Phase: Bid Documents
Date: 10-29-23
Revisions:

Professional Seal
Scale: 1/16" = 1'-0"
BM Description:
Building Elevations