

FLOOR & DECOR BATON ROUGE

10021 PROFESSIONAL BLVD.

LEGAL DESCRIPTION:

LOT 3-A-1, COSTCO SUBDIVISION, EAST BATON ROUGE PARISH, LOUISIANA
SECTION 100, TOWNSHIP 7 SOUTH, RANGE 1 EAST

NOTES:

1. LOT 3-A-1 IS MADE UP OF FORMER LOTS 3-A AND 3-B. LOT 3-A PARCEL ID #1410460787. LOT 3-B PARCEL ID #1410460788.

SHEETS:

- C-1 COVER SHEET
C-2 EXISTING CONDITIONS MAP
C-3 SITE PLAN
C-4 CIRCULATION PLAN
C-5 UTILITY PLAN
CONTECH CDS STANDARD DETAIL

A201 ARCHITECTURAL ELEVATIONS

M101 MECHANICAL PLAN

LS-1 LANDSCAPE PLAN

SITE PHOTOMETRIC PLAN

PLANNING SUMMARY:

1. EXISTING ZONING: C-2 HEAVY COMMERCIAL
2. COMPREHENSIVE PLAN LAND USE CATEGORY: REGIONAL CENTER
3. EXISTING ZONING OF ADJOINING PARCELS: C-2 HEAVY COMMERCIAL/C-AB-1 COMMERCIAL ALCOHOLIC BEVERAGE (RESTAURANT)
4. ACREAGE: 6.18 ACRES
5. NUMBER OF BUILDINGS: 1 BUILDING
6. BUILDING HEIGHT AND NUMBER OF STORIES: 32.5 FEET (1-STORY)
7. BUILDING SQUARE FOOTAGE: 79,579 S.F.
8. PROPOSED USE(S): BUILDING MATERIAL SALES

OWNER

FLOOR & DECOR
BRANDY CRAWFORD
2500 WINDY RIDGE PARKWAY SE,
ATLANTA, GA 30339
404-471-1634

OWNER'S REPRESENTATIVE

CENTERPOINT INTEGRATED SOLUTIONS
355 UNION BOULEVARD SUITE 301
LAKEWOOD, CO 80228
303-670-4111

CIVIL ENGINEER

WESLEY R. EUSTIS P.E., P.L.S.
3608 18TH STREET
METAIRIE, LA 70002
504-833-5300
504-833-5350

SURVEYOR

WESLEY R. EUSTIS P.E., P.L.S.
3608 18TH STREET
METAIRIE, LA 70002
504-833-5300
504-833-5350

LANDSCAPE ARCHITECT

AL BARCIA
3608 18TH STREET
METAIRIE, LA 70002
985-960-0429

ARCHITECT

SBLM
33 WALT WHITMAN ROAD, SUITE 300A
HUNTINGTON STATION, NY 11746
631-683-5588
631-683-5591

STRUCTURAL ENGINEER

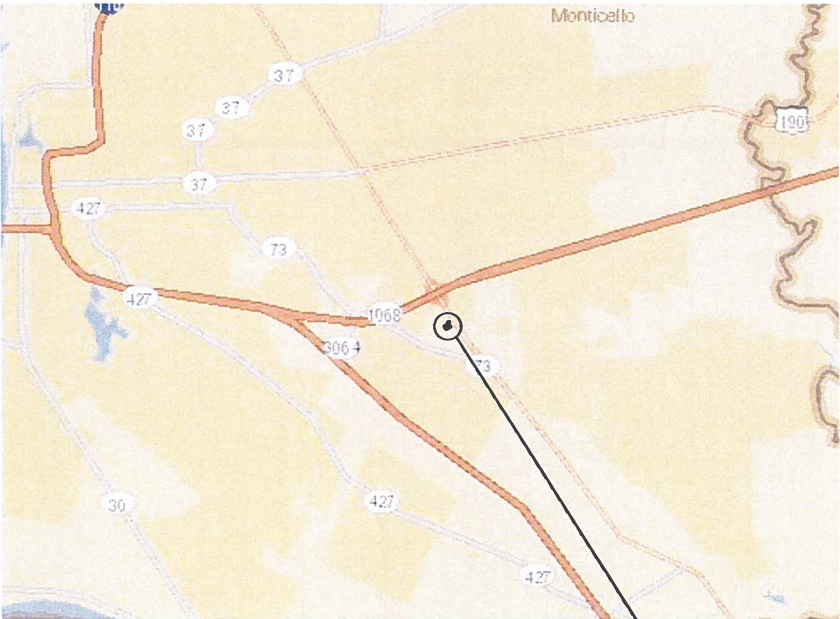
A.V. SCHWAN & ASSOCIATES
6000 E. THOMAS ROAD, SUITE 1
SCOTTSDALE ARIZONA 85251
602-265-4331
480-663-1788

CONSULTING ENGINEERS

DLB ASSOCIATES
265 INDUSTRIAL WAY WEST
EATONTOWN, N.J. 07724
732-774-2000

CODE CONSULTANTS

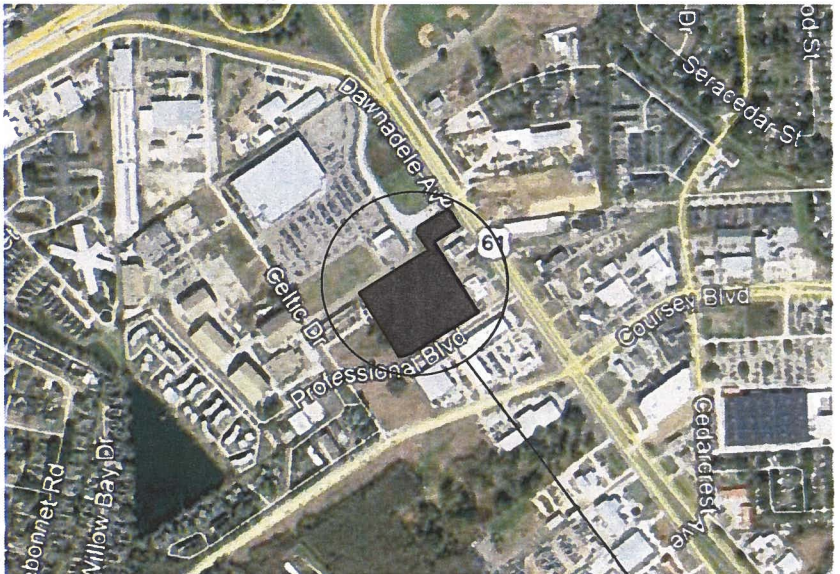
CODE CONSULTANTS, INC.
2043 WOODLAND PKWY, SUITE 300
ST. LOUIS, MISSOURI 63146
314-991-2633



VICINITY MAP
(NOT TO SCALE)



SITE



VICINITY MAP
1"=400'



SITE

FLOOR & DECOR
2500 WINDY RIDGE
PARKWAY SE
ATLANTA, GA 30339

SBLM
SBLM Architects
AA-0003434
33 Walt Whitman Road, Suite 300A
Huntington Station, NY 11746
Telephone: 631-683-5588
Fax: 631-683-5591

A.V. SCHWAN & ASSOCIATES
A.V. SCHWAN & ASSOCIATES
6000 E. THOMAS ROAD, SUITE 1
SCOTTSDALE, ARIZONA 85251
Telephone: 602-265-4331
Fax: 480-663-1788

dlb associates
CONSULTING ENGINEERS
265 INDUSTRIAL WAY WEST
EATONTOWN, NJ 07724
Telephone: 732-774-2000
Fax: 732-774-2000

CODE CONSULTANTS, INC.
2043 WOODLAND PKWY, SUITE 300
ST. LOUIS, MISSOURI 63146
Telephone: 314-991-2633
Fax: 314-991-2633

WESLEY R. EUSTIS & ASSOCIATES
3608 18TH STREET
METAIRIE, LA 70002
Telephone: 504-833-5300
Fax: 504-833-5350

PROJECT

FLOOR & DECOR
BATON ROUGE, LA

10021 Professional Blvd
Baton Rouge, LA 70809

ISSUE DATE: 03/22/2021
STORE NUMBER: #218819
AREA: 79,610 SF
JOB NUMBER: 031001
PROTOTYPE: 2019-02

ISSUE

SPY REVIEW: 03/01/21

SPY REVIEW: 03/01/21

SPY REVIEW: 03/01/21

SPY REVIEW: 03/01/21

SPY REVIEW: 03/01/21

SPY REVIEW: 03/01/21

SPY REVIEW: 03/01/21

SPY REVIEW: 03/01/21

SPY REVIEW: 03/01/21

SPY REVIEW: 03/01/21

SPY REVIEW: 03/01/21

SPY REVIEW: 03/01/21

SPY REVIEW: 03/01/21

SPY REVIEW: 03/01/21

SPY REVIEW: 03/01/21

SPY REVIEW: 03/01/21

SPY REVIEW: 03/01/21

SPY REVIEW: 03/01/21

SPY REVIEW: 03/01/21

SPY REVIEW: 03/01/21

SPY REVIEW: 03/01/21

SPY REVIEW: 03/01/21

SPY REVIEW: 03/01/21

SPY REVIEW: 03/01/21

SPY REVIEW: 03/01/21

SPY REVIEW: 03/01/21

SPY REVIEW: 03/01/21

SPY REVIEW: 03/01/21

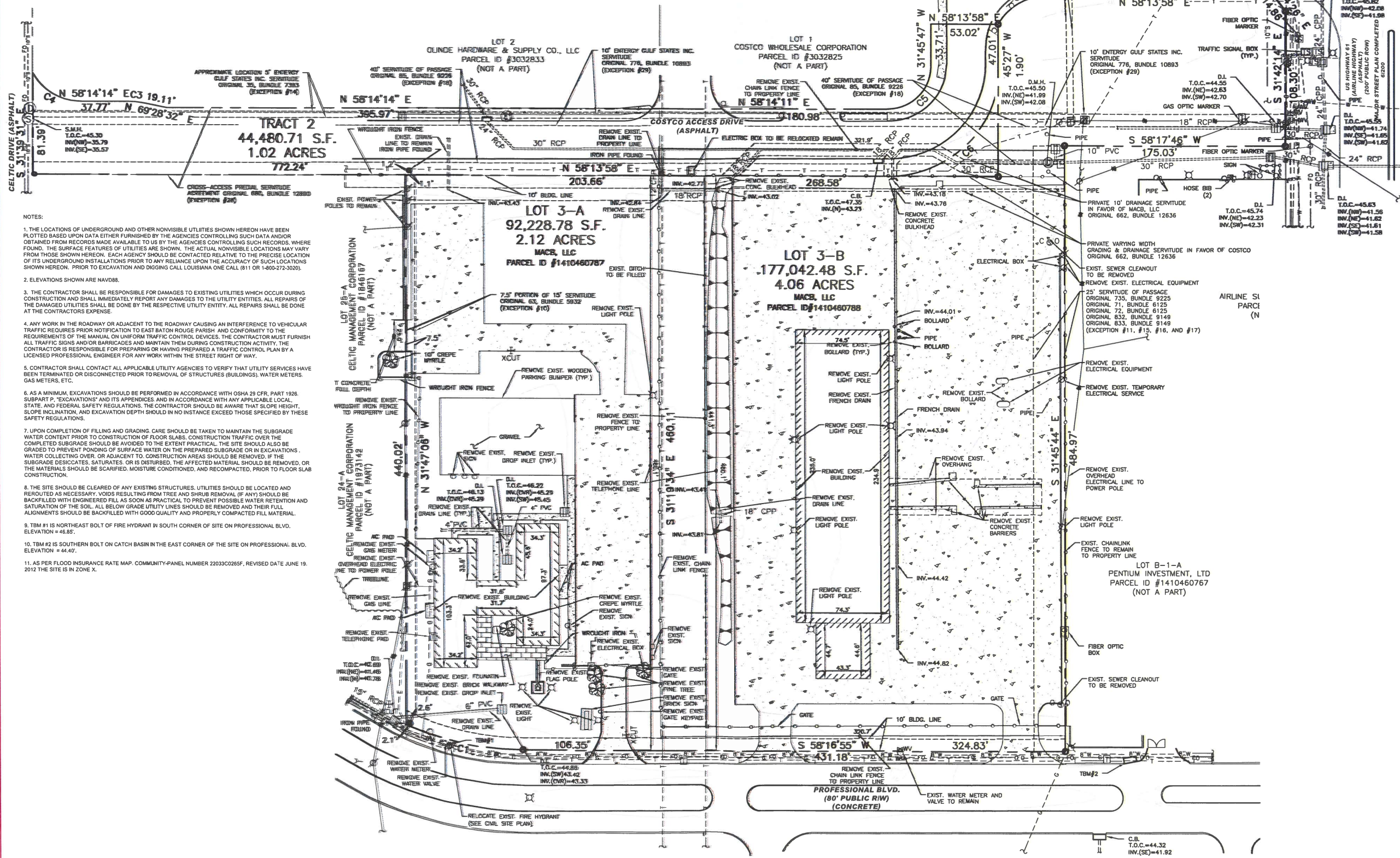
SPY REVIEW: 03/01/21

SPY REVIEW: 03/01/21

SPY REVIEW: 03/01/21

SPY REVIEW: 03/01/21

SPY REVIEW: 03/01/21



EXISTING CONDITIONS MAP

30' 0 30' 60' 90' 120'

30' X 42" SCALE: 1" = 30'

PC 4/27/21

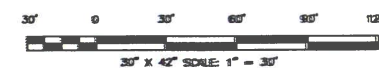
NOTES:

1. ALL TURNING RADII IS 3 FEET UNLESS OTHERWISE STATED ON THESE PLANS.
2. NO OUTDOOR STORAGE PROPOSED AT THIS TIME.
3. THE NEAREST CAT'S BUS STOP IS APPROXIMATELY 2,000 FEET TO THE SOUTHEAST. THE STOP IS ON COURSEY BLVD AT FRESH PICKENS MARKET.
4. ALL PEDESTRIAN CIRCULATION PATHWAYS AS SHOWN TO HAVE MAXIMUM 2% CROSS SLOPE AND 5% LONGITUDINAL SLOPE IN ACCORDANCE WITH ADA GUIDELINES.

[illegible]

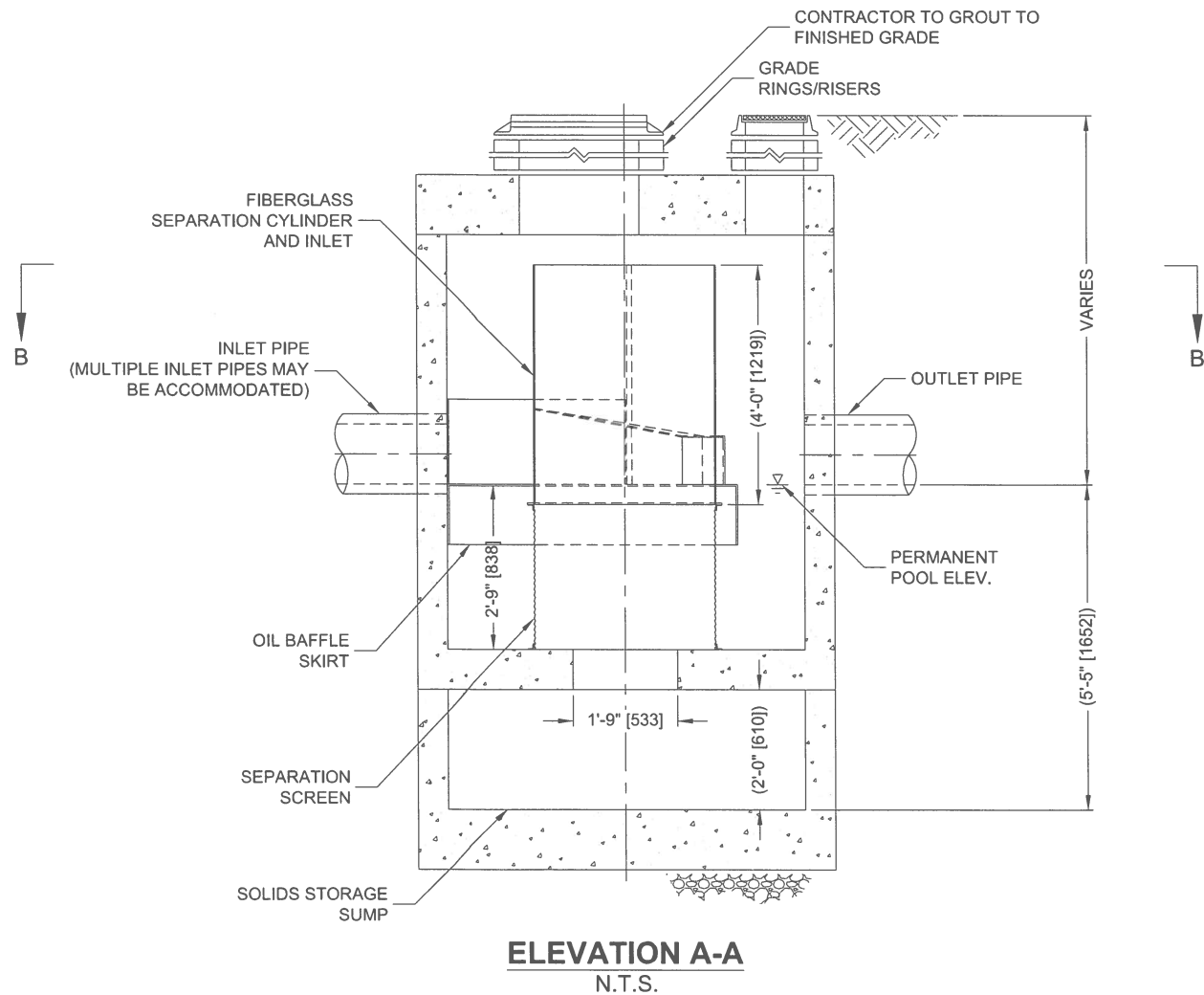
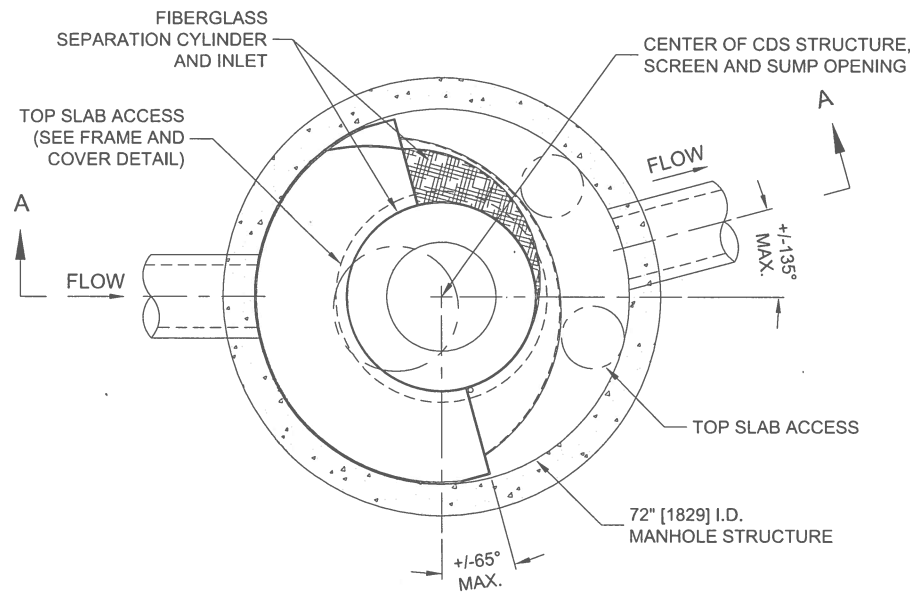
PRELIMINARY
FOR REVIEW ONLY
NOT FOR CONSTRUCTION
THIS DRAWING IS SUBJECT TO
REVISION, ALTERATION & DELETION

CIRCULATION PLAN



PC 4/27/21

I:\AD-CONTECH-CPI\COMIROOT\COMMON\DRAWINGS\TREATMENT\22 CDS\40 STANDARD DRAWINGS\ONLINE (CDS-C)\DWG\CDS3020-6-C-DTL.DWG 9/25/2015 8:21 AM



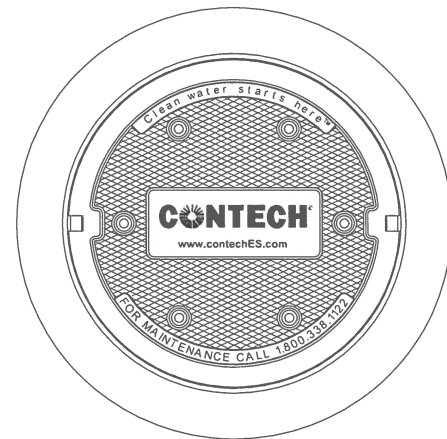
CDS3020-6-C DESIGN NOTES

CDS3020-6-C RATED TREATMENT CAPACITY IS 2.0 CFS [56.6 L/s], OR PER LOCAL REGULATIONS. MAXIMUM HYDRAULIC INTERNAL BYPASS CAPACITY IS 20.0 CFS [566 L/s]. IF THE SITE CONDITIONS EXCEED 20.0 CFS [566 L/s], AN UPSTREAM BYPASS STRUCTURE IS REQUIRED.

THE STANDARD CDS3020-6-C CONFIGURATION IS SHOWN. ALTERNATE CONFIGURATIONS ARE AVAILABLE AND ARE LISTED BELOW. SOME CONFIGURATIONS MAY BE COMBINED TO SUIT SITE REQUIREMENTS.

CONFIGURATION DESCRIPTION

- GRATED INLET ONLY (NO INLET PIPE)
- GRATED INLET WITH INLET PIPE OR PIPES
- CURB INLET ONLY (NO INLET PIPE)
- CURB INLET WITH INLET PIPE OR PIPES
- SEPARATE OIL BAFFLE (SINGLE INLET PIPE REQUIRED FOR THIS CONFIGURATION)
- SEDIMENT WEIR FOR NJDEP / NJCAT CONFORMING UNITS



FRAME AND COVER
(DIAMETER VARIES)
N.T.S.

SITE SPECIFIC DATA REQUIREMENTS

STRUCTURE ID				
WATER QUALITY FLOW RATE (CFS OR L/s)				*
PEAK FLOW RATE (CFS OR L/s)				*
RETURN PERIOD OF PEAK FLOW (YRS)				*
SCREEN APERTURE (2400 OR 4700)				*
PIPE DATA:		I.E.	MATERIAL	DIAMETER
INLET PIPE 1		*	*	*
INLET PIPE 2		*	*	*
OUTLET PIPE		*	*	*
RIM ELEVATION				*
ANTI-FLOTATION BALLAST			WIDTH	HEIGHT
			*	*
NOTES/SPECIAL REQUIREMENTS:				
* PER ENGINEER OF RECORD				

GENERAL NOTES

- CONTECH TO PROVIDE ALL MATERIALS UNLESS NOTED OTHERWISE.
- FOR SITE SPECIFIC DRAWINGS WITH DETAILED STRUCTURE DIMENSIONS AND WEIGHT, PLEASE CONTACT YOUR CONTECH ENGINEERED SOLUTIONS LLC REPRESENTATIVE. www.ContechES.com
- CDS WATER QUALITY STRUCTURE SHALL BE IN ACCORDANCE WITH ALL DESIGN DATA AND INFORMATION CONTAINED IN THIS DRAWING. CONTRACTOR TO CONFIRM STRUCTURE MEETS REQUIREMENTS OF PROJECT.
- STRUCTURE SHALL MEET AASHTO HS20 LOAD RATING, ASSUMING EARTH COVER OF 0' - 2', AND GROUNDWATER ELEVATION AT, OR BELOW, THE OUTLET PIPE INVERT ELEVATION. ENGINEER OF RECORD TO CONFIRM ACTUAL GROUNDWATER ELEVATION. CASTINGS SHALL MEET AASHTO M306 AND BE CAST WITH THE CONTECH LOGO..
- IF REQUIRED, PVC HYDRAULIC SHEAR PLATE IS PLACED ON SHELF AT BOTTOM OF SCREEN CYLINDER. REMOVE AND REPLACE AS NECESSARY DURING MAINTENANCE CLEANING.
- CDS STRUCTURE SHALL BE PRECAST CONCRETE CONFORMING TO ASTM C-478 AND AASHTO LOAD FACTOR DESIGN METHOD.

INSTALLATION NOTES

- ANY SUB-BASE, BACKFILL DEPTH, AND/OR ANTI-FLOTATION PROVISIONS ARE SITE-SPECIFIC DESIGN CONSIDERATIONS AND SHALL BE SPECIFIED BY ENGINEER OF RECORD.
- CONTRACTOR TO PROVIDE EQUIPMENT WITH SUFFICIENT LIFTING AND REACH CAPACITY TO LIFT AND SET THE CDS MANHOLE STRUCTURE.
- CONTRACTOR TO INSTALL JOINT SEALANT BETWEEN ALL STRUCTURE SECTIONS AND ASSEMBLE STRUCTURE.
- CONTRACTOR TO PROVIDE, INSTALL, AND GROUT INLET AND OUTLET PIPE(S). MATCH PIPE INVERTS WITH ELEVATIONS SHOWN. ALL PIPE CENTERLINES TO MATCH PIPE OPENING CENTERLINES.
- CONTRACTOR TO TAKE APPROPRIATE MEASURES TO ASSURE UNIT IS WATER TIGHT, HOLDING WATER TO FLOWLINE INVERT MINIMUM. IT IS SUGGESTED THAT ALL JOINTS BELOW PIPE INVERTS ARE GROUTED.

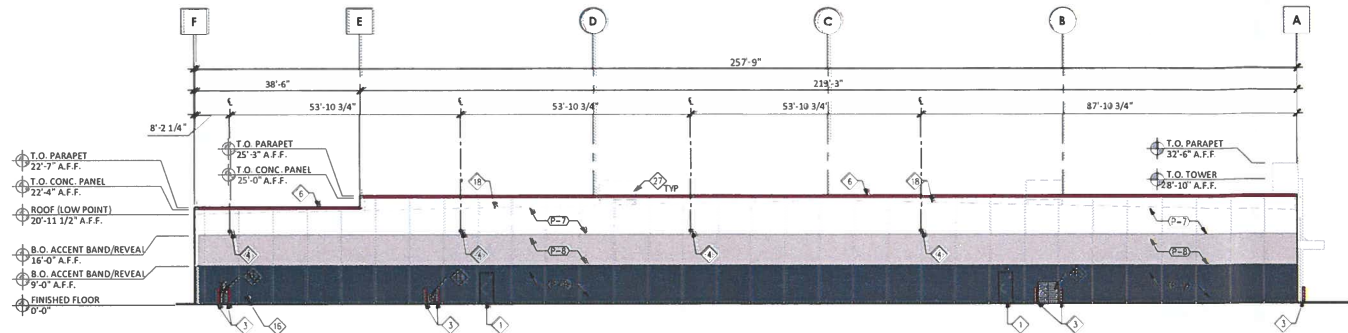


www.contechES.com
9025 Centre Pointe Dr., Suite 400, West Chester, OH 45069
800-338-1122 513-645-7000 513-645-7993 FAX

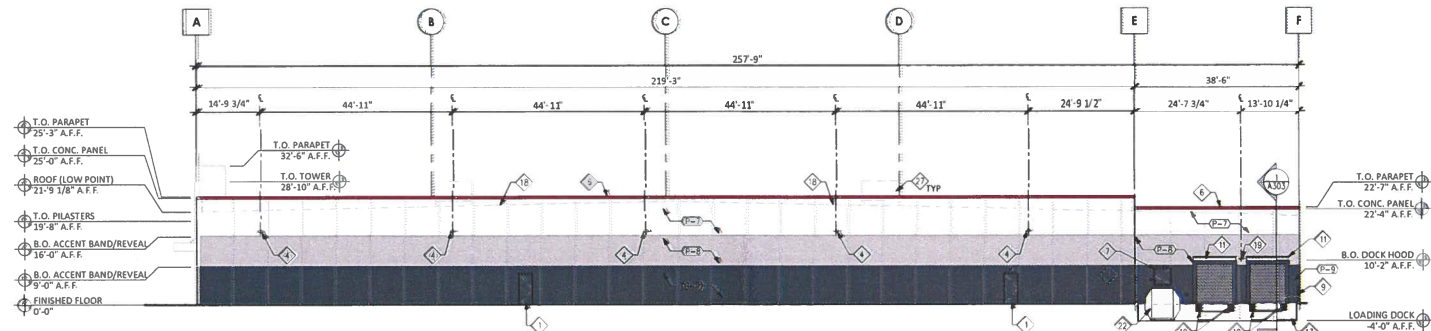
CDS3020-6-C
ONLINE CDS
STANDARD DETAIL

PAINT COLOR SCHEDULE

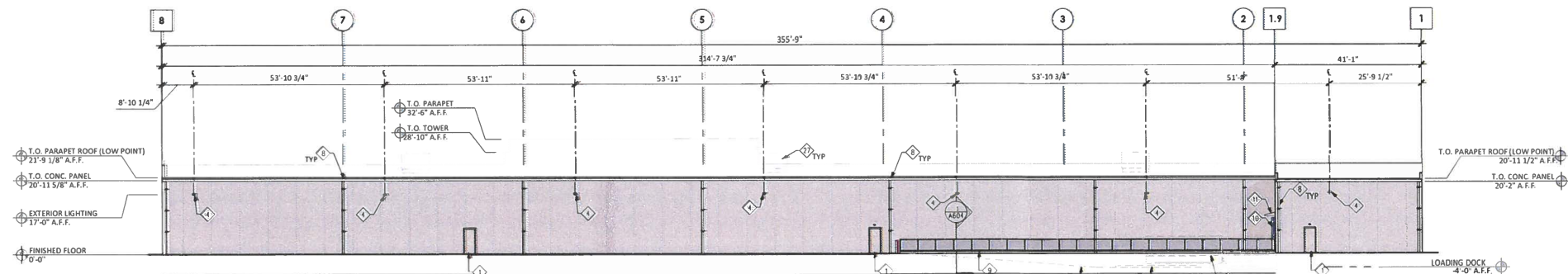
MARK	MATERIAL	MANUFACTURER	COLOR	FINISH	NOTES
P-7	PAINT	SHERWIN WILLIAMS	SW 7006 EXTRA WHITE	SATIN	
P-8	PAINT	SHERWIN WILLIAMS	SW 7044 AMAZING GRAY	SATIN	
P-9	PAINT	SHERWIN WILLIAMS	SW 7048 URBANE BRONZE	SATIN	
P-10	PAINT	SHERWIN WILLIAMS	SW 6866 REAL RED	SATIN	METAL COPING TO BE PREFINISHED "REAL RED" TO MATCH P-10



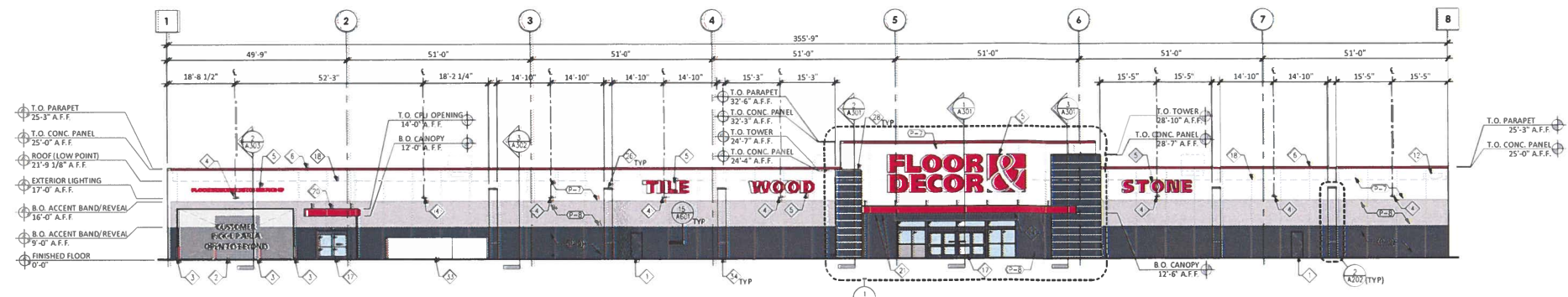
4 LEFT ELEVATION
SCALE: 1/16" = 1'-0"



3 RIGHT ELEVATION
SCALE: 1/16" = 1'-0"



2 REAR ELEVATION
SCALE: 1/16" = 1'-0"



1 FRONT ELEVATION
SCALE: 1/16" = 1'-0"

GENERAL NOTES

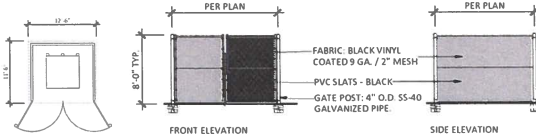
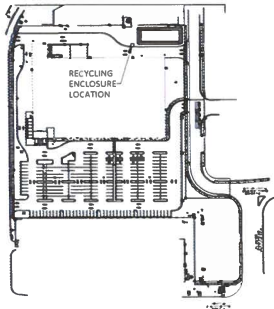
- ALL SURFACES TO BE PREPPED AND PRIMED PER MANUFACTURER'S RECOMMENDATIONS
- PROVIDE EPS EXPANSION/CONTROL JOINTS PER MANUFACTURER RECOMMENDATIONS. SEALANT COLOR TO MATCH EIFS. (IF APPLICABLE)
- ALL EXTERIOR PAINT TO BE A 3 COAT SYSTEM (1) PRIMER AND (2) COATS FINAL.
- ALL COLORS AND MATERIALS MUST BE CONFIRMED WITH FLOOR & DECOR CONSTRUCTION PROJECT MANAGER PRIOR TO APPLICATION.
- PAINT ALL CONDUIT, GAS PIPING ETC. TO MATCH ADJACENT WALL. NO EXPOSED CONDUIT ON FRONT WALL.
- SEE A201 FOR FINISH SCHEDULE FOR ADDITIONAL INFORMATION.
- SEE A202 FOR DOOR SCHEDULE FOR ADDITIONAL INFORMATION.
- NOTE ON WIND LOAD: CONTRACTOR TO COORDINATE INSTALLATION OF ALL EXTERIOR ELEMENTS WITH WIND LOAD CRITERIA INDICATED ON STRUCTURAL DRAWINGS. ALL COMPONENT INSTALLATION IS TO COMPLY WITH THE SPECIFIED WIND LOADING CRITERIA. PROVIDE MANUFACTURER AND/OR INSTALLATION CALCULATIONS AND CERTIFICATION WHEN REQUIRED BY LOCAL AUTHORITIES HAVING JURISDICTION. IF SPECIFICALLY REQUIRED BY THE LOCAL JURISDICTION PROVIDE SHOP DRAWINGS SIGNED AND SEALED BY STATE LICENSED PROFESSIONAL ENGINEER SHOWING COMPLIANCE WITH THE WIND LOAD CRITERIA.

ELEVATION LEGEND

DOOR MARK	DOOR IDENTIFIER
GLAZING MARK	GLAZING IDENTIFIER
FINISH MARK	FINISH IDENTIFIER
DESCRIPTION	SPOT ELEVATION

KEYNOTES

- DOOR - PAINT TO MATCH ADJACENT WALL UNLESS NOTED OTHERWISE
- OVERHEAD DOOR PREFINISHED TO MATCH ADJACENT WALL COLOR
- PIPE BOLLARD WITH COVER - SEE 2/A604
- WALL MOUNTED LIGHT FIXTURE AT 17'-0" A.F.F. U.O.N. - SEE ELECTRICAL DRAWINGS FOR MORE INFORMATION
- STORE SIGNAGE BY OTHERS - G.C. TO COORDINATE ACCESS PANELS W/ SIGN VENDOR
- PREFINISHED SHOP FABRICATED "KYNAR" METAL COPING (SEE ENLARGED ELEVATIONS)
- TRASH COMPACTOR DOOR PAINT TO MATCH ADJACENT WALL - SEE DOOR SCHEDULE
- PREFINISHED SHOP FABRICATED "KYNAR" METAL GUTTERS AND DOWNSPOUTS TO MATCH P-8 U.O.C. - SEE SHEET A303 FOR SIZES AND LOCATIONS
- FENCE ON RETAINING WALL. SEE STRUCTURAL DRAWINGS & 1/A604.
- DOCK SEAL AND BUMPERS - REFER TO 7/A604 AND SPECIFICATIONS FOR ADDITIONAL INFORMATION
- METAL DOCK HOOD TO MATCH P-8 - SEE 9/A604
- ADDRESS SIGN - INSTALL PER LOCAL AUTHORITY HAVING JURISDICTION
- TRUCK WELL BEYOND
- GAS RISER AND METER PAINT TO MATCH ADJACENT WALL - SEE MECHANICAL DRAWINGS
- OUTDOOR PROPANE STORAGE
- FIRE DEPT CONNECTION AND FA NOTIFICATION DEVICE. SEE FA AND FP DRAWINGS
- AUTO SLIDING DOORS - REFER TO DOOR SCHEDULE FOR MORE INFORMATION
- ROOF LINE BEYOND
- WALL MOUNTED LIGHT FIXTURE - CENTER LIGHT BETWEEN AND MOUNT FLUSH WITH DOCK HOODS - SEE ELECTRICAL DRAWINGS FOR MORE INFORMATION
- CANOPY AT CPU W/TECH AWAY FROM WALL TO INTERNAL SCUPPERS- SEE SECTION 2/A303 AND A W/TECH SHOP DRAWINGS
- EYEBOLTS FOR SIGN BANNERS
- COMPACTOR CHUTE AND CONTAINER
- SEE CIVIL DWGS FOR TRUCK DOCK GRADING
- ENTRY CANOPY
- THROUGH-WALL ROOF DRAIN OVER FLOW OUTLET / GRATE - SEE PLUMBING DRAWINGS
- PRE-FINISHED "KYNAR" PILASTER CAP (INSTALLED BY GC) SEE DETAIL 7/A601
- RTU BEYOND
- METAL COPING OVER ENTRANCE TOWERS (INSTALLED BY GC) (SHOP PRIMERED, FIELD PAINTED) SEE 11/A601 AND A201 FOR COLORS
- RECESSED HOSE BIB 24" AFG BY PANEL MANUFACTURER
- WATER SUPPLY / DDCV - SEE PLUMBING AND CIVIL DRAWINGS
- CLEAR STOREFRONT GLAZING



5 RECYCLING ENCLOSURE
N.T.S.

FLOOR & DECOR
2500 WINDY RIDGE
PARKWAY, SE
ATLANTA, GA 30339

SBLM
SBLM Architects AA-0003434
33 Wall Whitman Road, Suite 300A
Huntington Station, NY 11740
Telephone 631 683 5588
Fax 631 683 5591

A.V. SCHWAN & ASSOCIATES
CONSULTING STRUCTURAL ENGINEERS
4000 E. Tampa Road, Suite 1
Sarasota, Florida 34231
Phone 941 552 0121 Fax 941 552 0122
www.avschwan.com

dib associates
CONSULTING ELECTRICAL ENGINEERS
333 Henderson Rd., Suite 100
Baton Rouge, LA 70809
Phone 225 383 1111 Fax 225 383 1112
www.dibassociates.com

CCI
CODE CONSULTANTS, INC.
345 WESTLAND DRIVE, SUITE 200
BATON ROUGE, LOUISIANA 70802
714 995 2623

RECYCLING ENCLOSURE
A201
N.T.S.

FLOOR & DECOR
BATON ROUGE, LA

9969 Professional Blvd.
Baton Rouge, LA 70809

ISSUE DATE: 03/1/2021
STORE NUMBER: 839899
AREA: 79,610 SF
JOB NUMBER: 021001
PROTOTYPE: 2019 C2

NO.	REVISION	DATE
1	ISSUED FOR PERMIT	03/01/2021
2	20% REVISION SET	04/06/2021
3	50% REVISION SET	06/16/2021
4	90% REVISION SET	06/22/2021

SEAL

SHEET

EXTERIOR ELEVATIONS

DRAWN: EWM/ND
CHECKED: GF

A201

GENERAL NOTES

1. Existing Conditions Are Based On Record Drawings Provided By The Owner And/or Limited Field Verification By Others. Contractor Shall Adjust To Actual Field Conditions At No Additional Expense To The Project.
2. Contractor Shall Be Responsible For Field Verifications Of All Existing Conditions Prior To Submitting His Bid. No Additional Compensation Will Be Provided For Any Extras Due To The Contractor's Failure To Visit The Project Site Prior To Submitting A Bid. Any Discrepancies Shall Be Immediately Reported To The Engineer For Resolution.
3. Contractor Shall Familiarize Himself With Existing Work Prior To Bidding And Start Of Work. Contractor Is Responsible To Demolish All Demolition As Required For Installation/Construction Of New Work.
4. All Work Shall Be Completed In Accordance With All Applicable Government And Local Codes.
5. Mechanical Contractor Shall Field Coordinate With Electrical Contractor For All Power Requirements.
6. All Contractors Shall Review A Complete Set Of Construction Documents And Cooperate With The Other Trades So That The Installation Of All Equipment May Be Properly Coordinated.
7. All Equipment Furnished Shall Fit The Space Available With Connections In The Required Locations And With Adequate Space For Operating And Servicing. The Drawings Are Generally Dimensioned And Indicate The Intent Of The Installation While The Specifications And Equipment List Denote The Type And Quality Of Material And Workmanship To Be Used. The Drawings Shall Not Be Scaled For Exact Measurements. Where A Conflict Exists Between The Drawings And The Specifications, The Higher And/Or More Costly Standard Will Apply. The Contractor Shall Promptly Notify The Engineer Whose Decision Shall Be Final. No Allowance Will Be Made Subsequently In This Regard On Behalf Of The Contractor After Award Of Contract.
8. Coordinate Duct Routing And Heights With General Contractor. Verify All Clearances Before Starting Work.
9. The Contractor Shall Install All Piping, Ductwork And Equipment As Required To Conform To The Structure, Avoid Obstructions, Preserve Ceiling Heights And Headroom And Make All Equipment Requiring Maintenance Or Repair Accessible.
10. All Duct Connections To HVAC Equipment Must Be Made With Flexible Connectors. Refer To Detail Sheet For More Information.
11. Do Not Attach Anything To Deck Above. Attach To Structure (i.e. Beams, Joists) Only. Duct Hangers Shall Be Installed In Accordance With Local Code. All Connections To Joists Shall Be Made At The Top Chord.
12. All Duct Dimensions Indicated Are Clear Inside Dimensions. All Supply And Untempered Outdoor Air Ductwork Shall Be Lined With 1" Acoustical Duct Liner Or Wrapped With 1-1/2" Thick Fire Retardant Fiberglass With A Reinforced Aluminum Foil Jacket And Shall Be Approved For Use By SMACNA And NAIMA. Return Air Transfer Ducts And Return Ductwork Within 10 Feet Of The Unit Fan Shall Be Lined With 1" Acoustical Duct Liner.
13. Provide Remote Volume Damper Control Manufactured By Young Regulator Or United Enertech For Dampers Located Above Inaccessible Ceilings. Locate Controller Above Accessible Ceiling Location.
14. All Equipment And Materials Install In Plenum Return Ceiling Must Meet The Flame Spread And Smoke Developed Ratings Of 25/50 And Be Approved For Use In Plenum Return Ceilings.
15. Mechanical Contractor Shall Provide Tenant With A Written One (1) Year Manufacturer's Warranty On All HVAC Equipment Provided And / Or Installed. The Warranty Shall Include All Labor And Materials.
16. At The Completion Of Construction The Test And Balance National Account Vendor (NEXREV- See Cover Sheet) Shall Submit A Certified Air Balance Report To The Engineer, Tenant, And Landlord.
17. Provide Filter Sock At All Return And Air Ducts During Construction. Remove At Turnover To Tenant.
18. Mechanical Contractor Shall Complete Equipment Start-up Prior To Substantial Completion And Shall Complete Equipment Start-up Checklist In Specification 'HVAC Equipment' For Each Piece Of Equipment. Refer To Construction Specifications.
19. Contractor Shall Include In Their Cost Relocation Of Up To 5 Roof Top Unit Sensor Assemblies For The Purpose Of Racking Or Merchandise Product Conflict.
20. For Roof Top Units Supplied With Demand Control Ventilation (CO2 Sensor), Test & Balance Contractor To Set 'Minimum' OSA Damper Position To The CFM Values Listed On The Roof Top Unit Schedule. Demand Control Ventilation Controller To Modulate Open From The Minimum Position Based On Real-time CO2 Levels.
21. New And Any Existing Roof Top Units Shall Be Numbered In Ascending Order Beginning With Unit #1. Unit #1 Shall Be Located At The Left Front Corner Of The Sales Area And Numbering Shall Run In Consecutive Order From Left Front Sales Area To Right Front, Sales Area Front To Left Rear Sales Area To Right Rear Sales Area, To Warehouse Front To Warehouse Rear, To Office Package Last In The Numbering Sequence. Any Existing Units Shall Be Renumbered To Align With The Above Sequential Order. Label Units Facing Roof Hatch Per Detail On Mechanical Details Sheet.
22. Flexible Duct Shall Be Installed In Accordance With The Installation Instructions As Described In Their Publications. Flexible Duct Shall Be 5'-0" Maximum Length And 90 Degree Maximum Bend Radius. No Kinks Or Bends. Refer To Detail Sheet For More Information.
23. Provide Seismic Bracing For All Equipment And Ductwork Per The Applicable Seismic Zone. Refer To Structural For Design Criteria.
24. Provide Fire Dampers And Fire Stops With Means Of Access As Required By Code. Coordinate With Local Building Official.

SIGN A	60/127 Floor & Decor
Type:	Individual Channel Letters Wall Sign
Illumination:	Internally Illuminated LED
Square Footage:	403.74

SIGN B	36 Tile
Type:	Individual channel letters/ Remote
Illumination:	Internally Illuminated LED
Square Footage:	31.47

SIGN C	36 Wood
Type:	Individual channel letters/ Remote
Illumination:	Internally Illuminated LED
Square Footage:	45.66

SIGN D	36 Stone
Type:	Individual channel letters/ Remote
Illumination:	Internally Illuminated LED
Square Footage:	48.22

SIGN E	12 Floor & Decor, customer pick-up
Type:	Individual channel letters/ Remote
Illumination:	Internally Illuminated LED
Square Footage:	25.65

SIGN F	45" Floor & Decor [Linear]
Type:	Individual Channel Letters
Illumination:	Internally Illuminated LED
Square Footage:	169.04

SIGN G	45" Floor & Decor [Linear]
Type:	Individual Channel Letters
Illumination:	Internally Illuminated LED
Square Footage:	169.04

SIGN H	Floor & Decor
Type:	D/F Monument Sign
Illumination:	Internally Illuminated w/ LED's
Square Footage:	50.00



This rendering is the property of Southwest Signs, Inc. It is for the exclusive use of Southwest Signs, Inc. and the party for which it was intended, the requestor. It is an unpublished original drawing not to be distributed, reproduced or exhibited without the explicit consent of Southwest Signs, Inc. Please contact your Account Manager for questions regarding this statement.

Floor & Decor
9969 Professional Blvd.
Baton Rouge, LA 70809

Project ID#: 127362
Project Mgr: Robert SCiarra
Designer: Kirk Forster
Created on: 04/16/2021

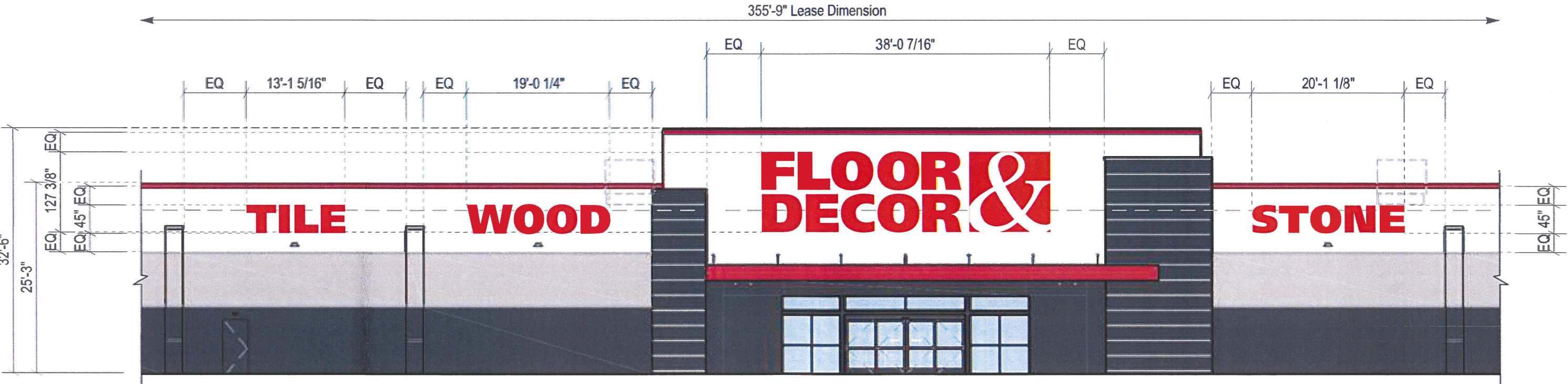
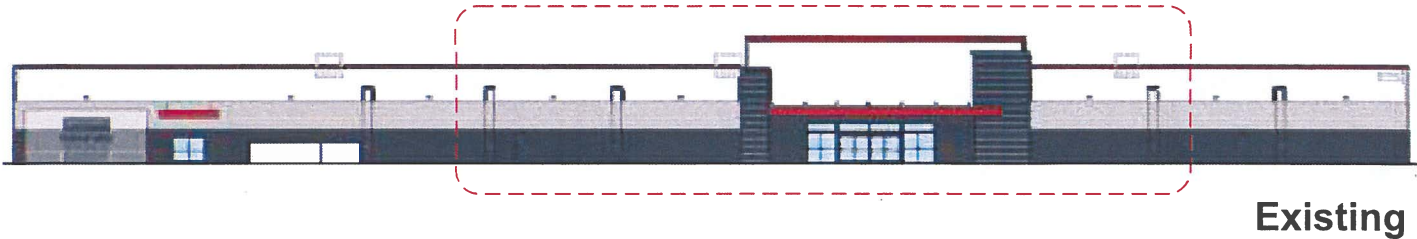
REVISION	R1	04/23/21	MD	Updated size for T/W/S to 36"
	R2	04/26/21	MD	Adjusted monument size to 5' x 10', added setback note

SIGN A	60" Floor & Decor [Stacked]
Type:	Individual Channel Letters Wall Sign
Illumination:	Internally Illuminated LED
Square Footage:	403.74

SIGN C	45" Wood
Type:	Individual Channel Letters
Illumination:	Internally Illuminated LED
Square Footage:	71.33

SIGN B	45" Tile
Type:	Individual Channel Letters
Illumination:	Internally Illuminated LED
Square Footage:	49.16

SIGN D	45" Stone
Type:	Individual Channel Letters
Illumination:	Internally Illuminated LED
Square Footage:	75.35



Front Elevation (Northeast)
 Scale: 1/16" = 1'-0"

Allowable Square Footage this Elevation:	2694.81
Formula: 30% of the wall area, with a minimum of 32sf	
Actual Square Footage this Elevation:	625.23



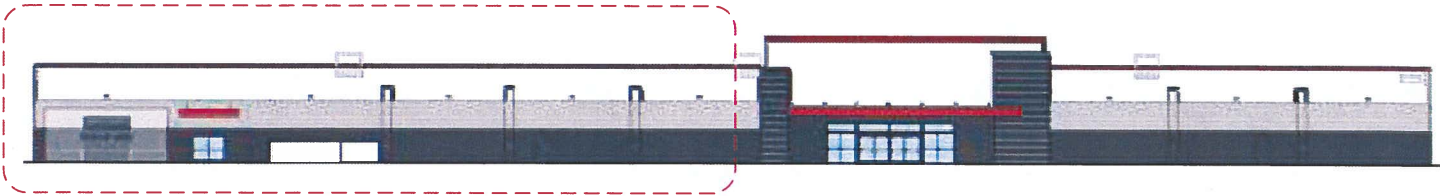
This rendering is the property of Southwest Signs, Inc. It is for the exclusive use of Southwest Signs, Inc. and the party for which it was intended, the requestor. It is an unpublished original drawing not to be distributed, reproduced or exhibited without the explicit consent of Southwest Signs, Inc. Please contact your Account Manager for questions regarding this statement.

Floor & Decor
 9969 Professional Blvd.
 Baton Rouge, LA 70809

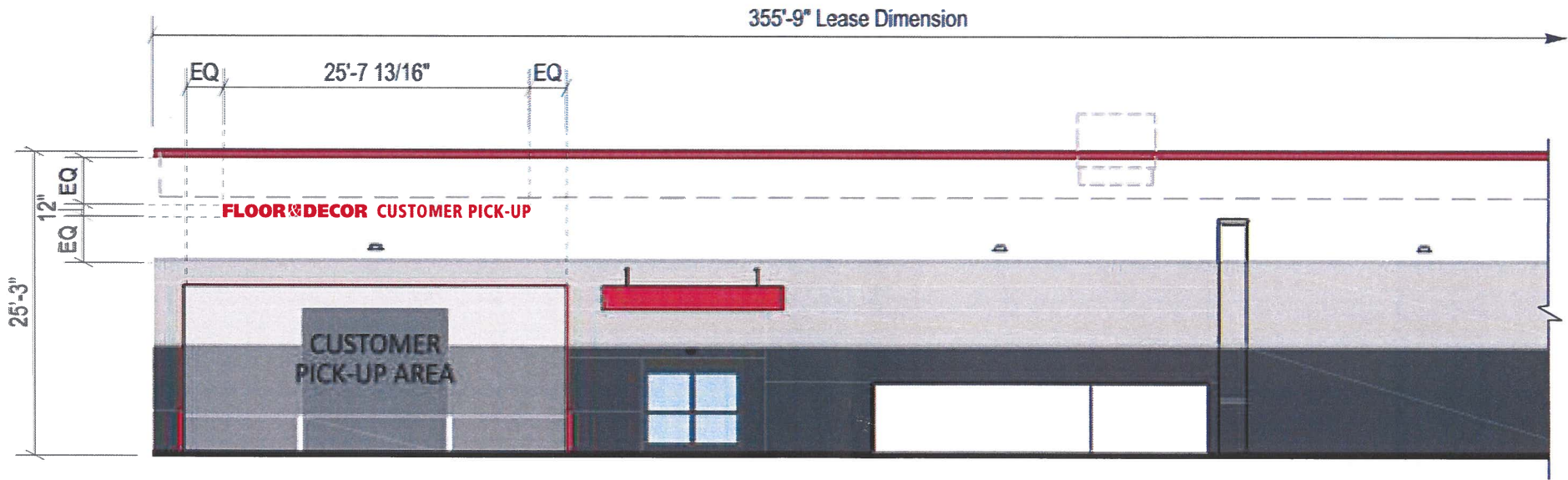
Project ID#: **127362**
 Project Mgr: **Robert SCiarra**
 Designer: **Kirk Forster**
 Created on: **04/16/2021**

REVISION	R1

SIGN E	12" Floor & Decor Customer Pick-Up
Type:	Individual Channel Letters
Illumination:	Internally Illuminated LED
Square Footage:	25.65



Existing



Front Elevation [Left] (Northeast)
Scale: 1/16" = 1'-0"

Allowable Square Footage this Elevation:	2694.81
Formula: 30% of the wall area, with a minimum of 32sf	
Actual Square Footage this Elevation:	625.23



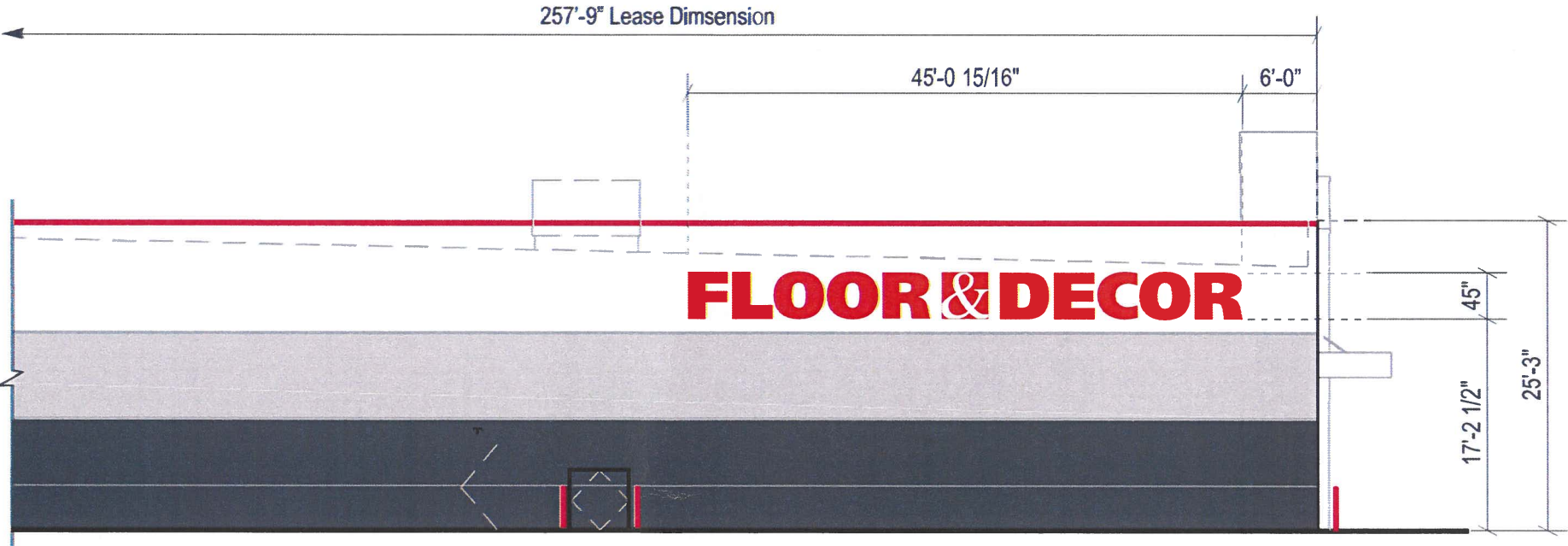
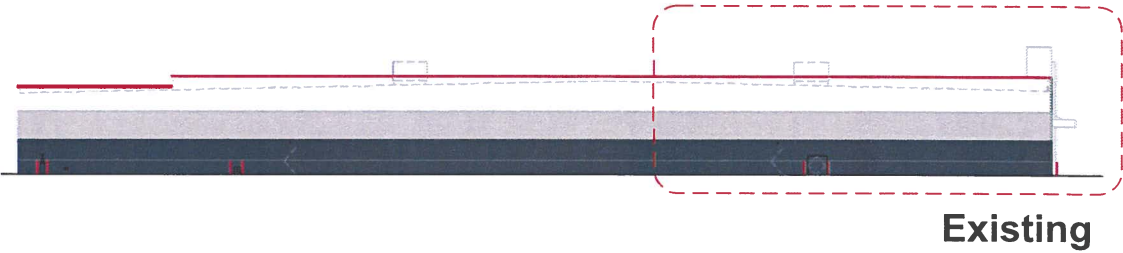
This rendering is the property of Southwest Signs, Inc. It is for the exclusive use of Southwest Signs, Inc. and the party for which it was intended, the requestor. It is an unpublished original drawing not to be distributed, reproduced or exhibited without the explicit consent of Southwest Signs, Inc. Please contact your Account Manager for questions regarding this statement.

Floor & Decor
9969 Professional Blvd.
Baton Rouge, LA 70809

Project ID#: **127362**
Project Mgr: **Robert SCiarra**
Designer: **Kirk Forster**
Created on: **04/16/2021**

REVISION	R1

SIGN F	45" Floor & Decor [Linear]
Type:	Individual Channel Letters
Illumination:	Internally Illuminated LED
Square Footage:	169.04



Left Elevation (Southeast)
 Scale: 1/16" = 1'-0"

Allowable Square Footage this Elevation:	1933.13
Formula: 30% of the wall area, with a minimum of 32sf	
Actual Square Footage this Elevation:	169.04



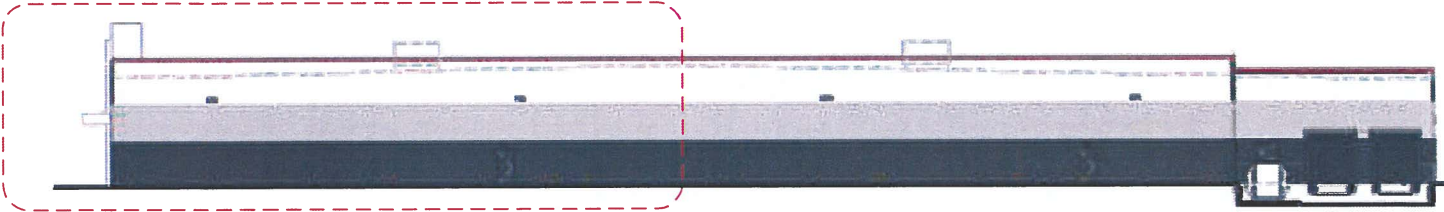
This rendering is the property of Southwest Signs, Inc. It is for the exclusive use of Southwest Signs, Inc. and the party for which it was intended, the requestor. It is an unpublished original drawing not to be distributed, reproduced or exhibited without the explicit consent of Southwest Signs, Inc. Please contact your Account Manager for questions regarding this statement.

Floor & Decor
 9969 Professional Blvd.
 Baton Rouge, LA 70809

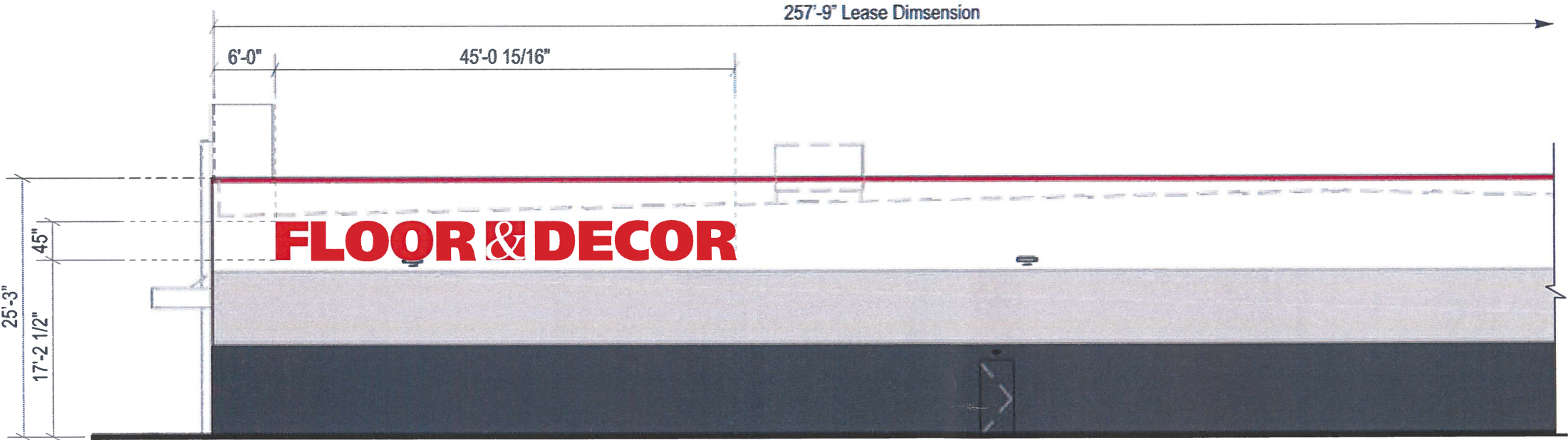
Project ID#: **127362**
 Project Mgr: **Robert SCiarra**
 Designer: **Kirk Forster**
 Created on: **04/16/2021**

REVISION	R1

SIGN G	45" Floor & Decor [Linear]
Type:	Individual Channel Letters
Illumination:	Internally Illuminated LED
Square Footage:	169.04



Existing



Right Elevation (Northeast)

Scale: 1/16" = 1'-0"

Allowable Square Footage this Elevation:	1644.38
Formula: 30% of the wall area, with a minimum of 32sf	
Actual Square Footage this Elevation:	169.04



This rendering is the property of Southwest Signs, Inc. It is for the exclusive use of Southwest Signs, Inc. and the party for which is was intended, the requestor. It is an unpublished original drawing not to be distributed, reproduced or exhibited without the explicit consent of Southwest Signs, Inc. Please contact your Account Manager for questions regarding this statement.

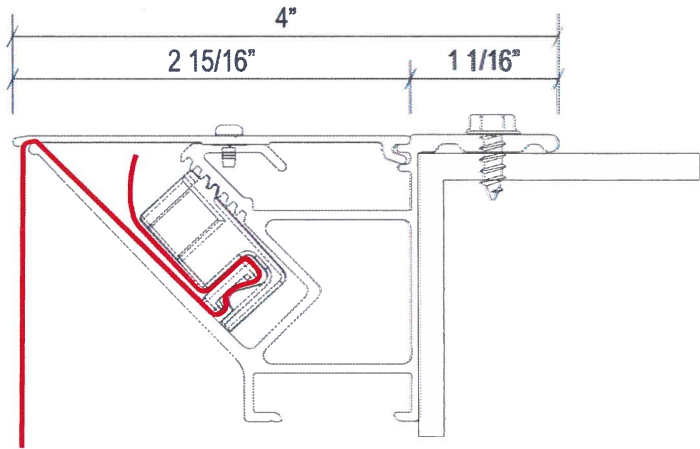
Floor & Decor
9969 Professional Blvd.
Baton Rouge, LA 70809

Project ID#: 127362
Project Mgr: Robert SCiarra
Designer: Kirk Forster
Created on: 04/16/2021

REVISION	R1

SIGN A	60" Floor & Decor [Stacked]
Type:	Individual Channel Letters Wall Sign
Illumination:	Internally Illuminated LED
Square Footage:	403.74

PartNumber	Part
#2104	Flat Bleed Retro Frame
#2121	Flat Bleed Retro Frame Cover



Bleed Frame Detail

Scale: N.T.S.

Electrical Detail:

White LEDs
(X) 60w Transformer @ 1.1 Amps
Total Amps: X.X
(1) 20 amp 120V Circuit Req.



General Notes:

This sign is to be installed in accordance with the requirements of Article 600 of the National Electrical Code.

- 1) Grounded and bonded per NEC 600.7/NEC 250
- 2) Existing branch circuit in compliance with NEC 600.5, not to exceed 20 amps
- 3) Sign is to be UL listed per NEC 600.3
- 4) UL disconnect switch per NEC 600.6- required per sign component before leaving manufacturer*
*For multiple signs, a disconnect is permitted but not required for each section



Sign Layout Detail

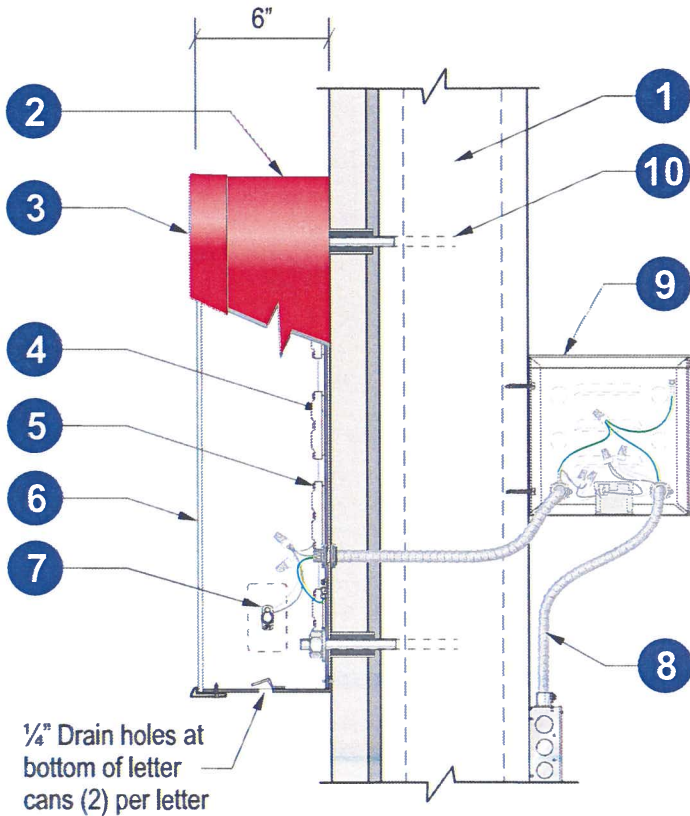
Scale: 1/8" = 1'-0"

Specifications: Channel Letters

1. Existing Facade: TBD
2. 0.040" Pre-finished Red letter returns
3. 1" Jewelite trimcap (Red) bonded to face and #8 pan head screws to returns
4. 3mm Signabond Lite composite backs fastened to returns w/ 1/2" 18 gauge staples. Seal w/ VOC compliant 360 white latex caulk to prevent moisture. (Interior of sign can painted white for maximum illumination)
5. WhiteLED s
6. 3/16" White lexan faces w/ first surface applied vinyl
■ 3M 3630-33 Red
7. Disconnect switch UL Outdoor rated toggle type w/ neoprene boot per NEC 600-6
8. Primary electrical feed in UL conduit / customer supplied UL junction box
9. Transformers within UL enclosure (removable lid), 1/4" x 1" min screws
10. Mounting hardware: TBD

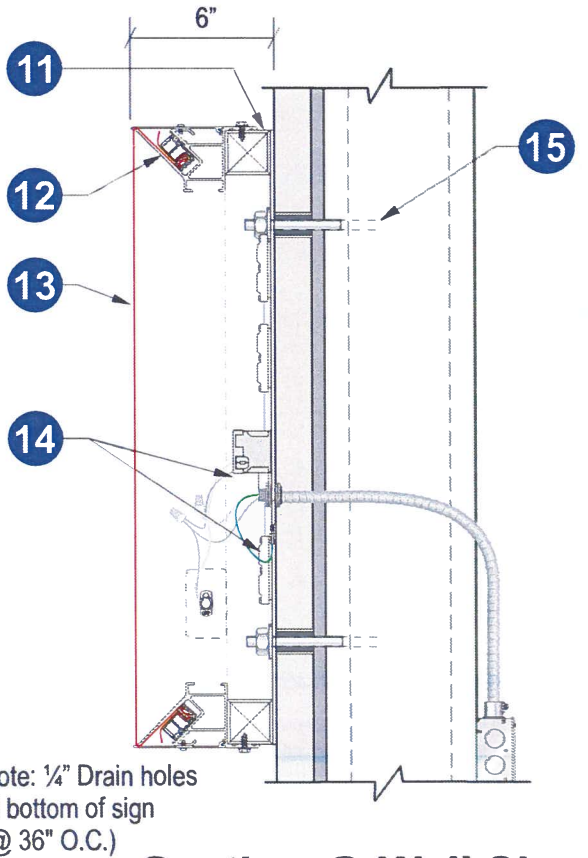
Specifications: Wall Sign

11. 2" x 2" Aluminum tube frame painted to match Matthews MP 2032 Red
12. Bleed face retro frame (SignComp #2104) w/ cover (SignComp #2121) and 0.080" back. Cabinet painted to match Matthews MP 2032 Red
13. White flex face with first surface applied vinyl
■ 3M 3630-33 Red
14. Sign cabinet contains White LEDs and transformers
15. Mounting hardware: TBD



**Section @ LED Channel Ltr
"Floor / Decor"**

Scale: N.T.S.



**Section @ Wall Sign
"&"**

Scale: N.T.S.



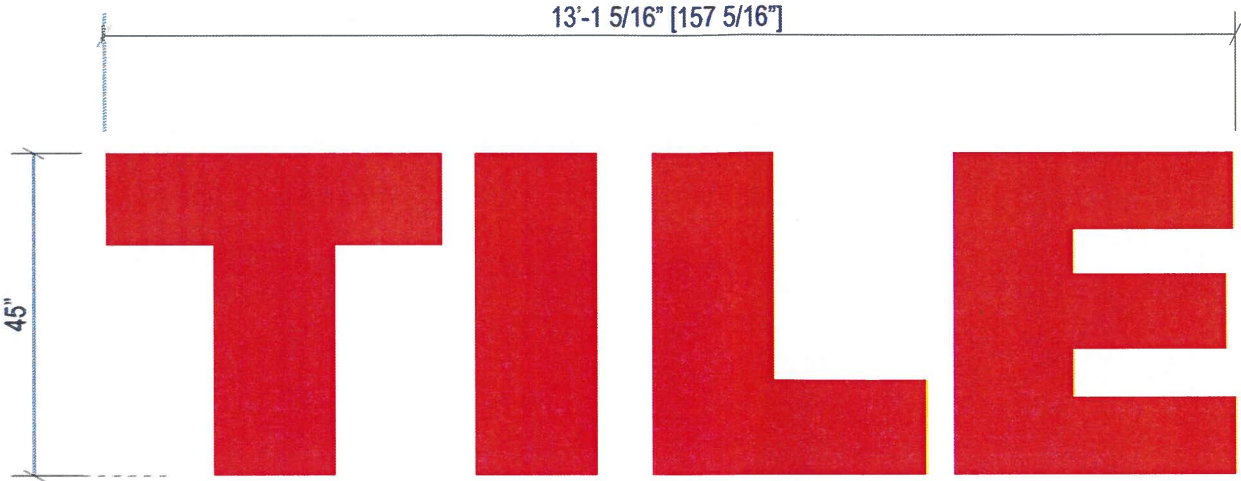
This rendering is the property of Southwest Signs, Inc. It is for the exclusive use of Southwest Signs, Inc. and the party for which it was intended, the requestor. It is an unpublished original drawing not to be distributed, reproduced or exhibited without the explicit consent of Southwest Signs, Inc. Please contact your Account Manager for questions regarding this statement.

Floor & Decor
9969 Professional Blvd.
Baton Rouge, LA 70809

Project ID#: **127362**
Project Mgr: **Robert SCiarra**
Designer: **Kirk Forster**
Created on: **04/16/2021**

REVISION	
R1	

SIGN B	45" Tile
Type:	Individual Channel Letters
Illumination:	Internally Illuminated LED
Square Footage:	49.16



Sign Layout Detail
Scale: 3/8" = 1'-0"

Electrical Detail:

White LEDs
 (2) 60w Transformer @ 1.1 Amps
 Total Amps: 2.2
 (1) 20 amp 120V Circuit Req.

General Notes:

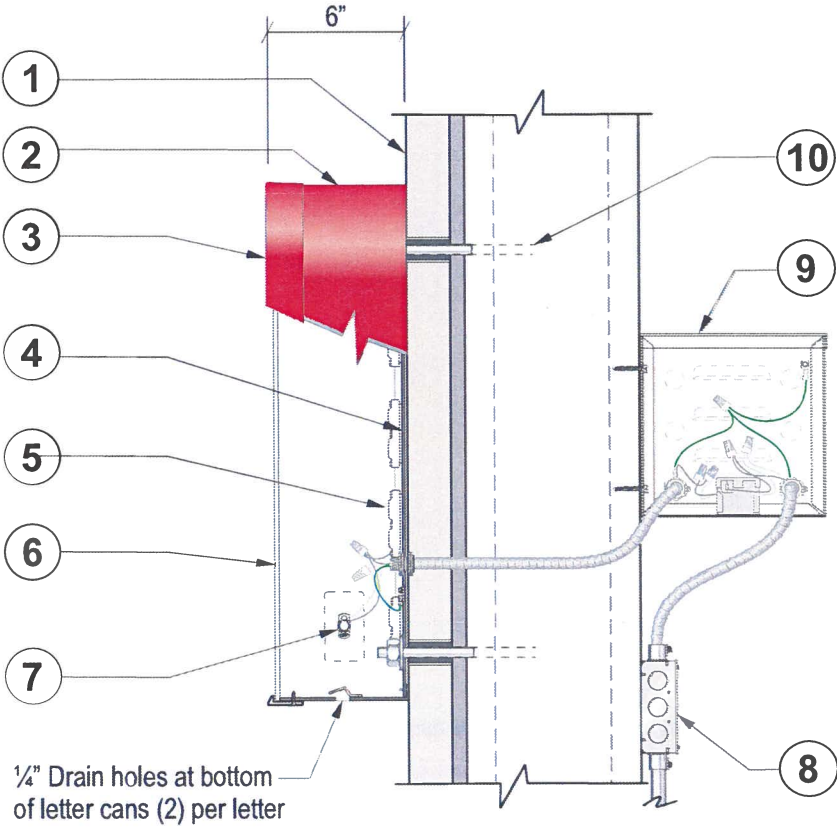
This sign is to be installed in accordance with the requirements of Article 600 of the National Electrical Code.

- 1) Grounded and bonded per NEC 600.7/NEC 250
- 2) Existing branch circuit in compliance with NEC 600.5, not to exceed 20 amps
- 3) Sign is to be UL listed per NEC 600.3
- 4) UL disconnect switch per NEC 600.6- required per sign component before leaving manufacturer*

*For multiple signs, a disconnect is permitted but not required for each section

- Specifications: Channel Letters**
 1. Existing Facade: TBD
 2. 0.040" Pre-finished Red letter returns
 3. 1"Jewelite trimcap (Red) bonded to face and #8 pan head screws to returns
 4. 3mm Signabond Lite composite backs fastened to returns w/ 1/2" 18 gauge staples. Seal w/ VOC compliant 360 white latex caulk to prevent moisture. (Interior of sign can painted white for maximum illumination)
 5. White LEDs
 6. 3/16" White lexan w/ first surface applied vinyl

3M 3630-33 Red
 7. Disconnect switch UL Outdoor rated toggle type w/ neoprene boot per NEC 600-6
 8. Primary electrical feed in UL conduit / customer supplied UL junction box
 9. Transformers within UL enclosure (removable lid), 1/4" x 1" min screws
 10. Mounting hardware: TBD



Section @ LED Channel Letter
Front-Lit (Remote) Scale: N.T.S.



This rendering is the property of Southwest Signs, Inc. It is for the exclusive use of Southwest Signs, Inc. and the party for which is was intended, the requestor. It is an unpublished original drawing not to be distributed, reproduced or exhibited without the explicit consent of Southwest Signs, Inc. Please contact your Account Manager for questions regarding this statement.

Floor & Decor
9969 Professional Blvd.
Baton Rouge, LA 70809

Project ID#: **127362**
 Project Mgr: **Robert SCiarra**
 Designer: **Kirk Forster**
 Created on: **04/16/2021**

REVISION	R1

SIGN C	45" Wood
Type:	Individual Channel Letters
Illumination:	Internally Illuminated LED
Square Footage:	71.33



Sign Layout Detail
Scale: 1/4" = 1'-0"

Electrical Detail:

White LEDs

(3) 60w Transformer @ 1.1 Amps

Total Amps: 3.3

(1) 20 amp 120V Circuit Req.

General Notes:

This sign is to be installed in accordance with the requirements of Article 600 of the National Electrical Code.

1) Grounded and bonded per NEC 600.7/NEC 250

2) Existing branch circuit in compliance with NEC 600.5, not to exceed 20 amps

3) Sign is to be UL listed per NEC 600.3

4) UL disconnect switch per NEC 600.6- required per sign component before leaving manufacturer*

*For multiple signs, a disconnect is permitted but not required for each section

Specifications: Channel Letters

1. Existing Facade: TBD

2. 0.040" Pre-finished Red letter returns

3. 1"Jewelite trimcap (Red) bonded to face and #8 pan head screws to returns

4. 3mm Signabond Lite composite backs fastened to returns w/ 1/2" 18 gauge staples. Seal w/ VOC compliant 360 white latex caulk to prevent moisture. (Interior of sign can painted white for maximum illumination)

5. White LEDs

6. 3/16" White lexan w/ first surface applied vinyl

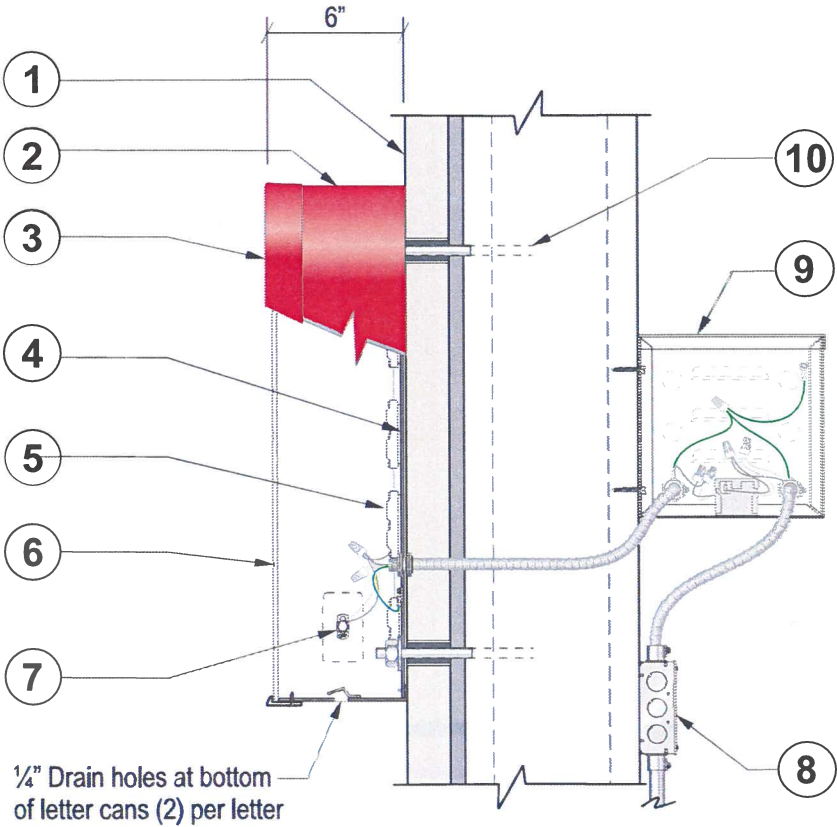
■ 3M 3630-33 Red

7. Disconnect switch UL Outdoor rated toggle type w/ neoprene boot per NEC 600-6

8. Primary electrical feed in UL conduit / customer supplied UL junction box

9. Transformers within UL enclosure (removable lid), 1/4" x 1" min screws

10. Mounting hardware: TBD



Section @ LED Channel Letter
Front-Lit (Remote) Scale: N.T.S.



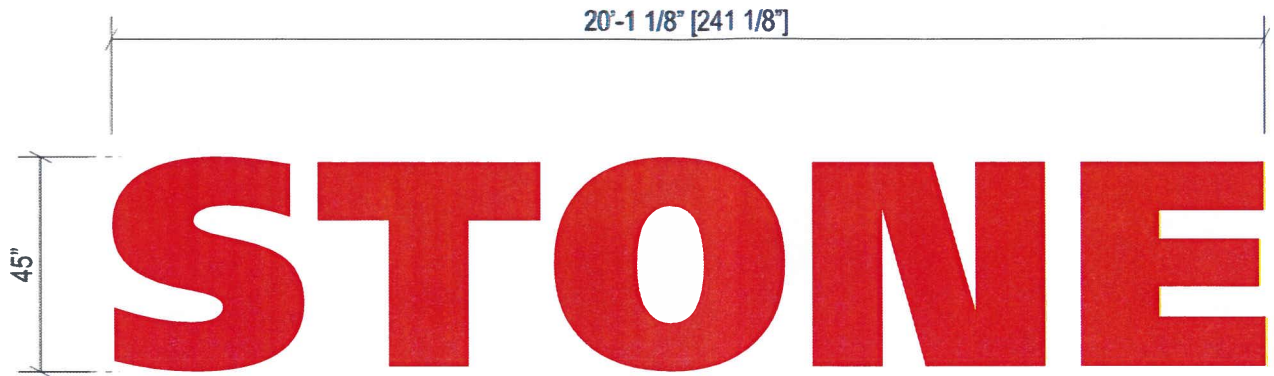
This rendering is the property of Southwest Signs, Inc. It is for the exclusive use of Southwest Signs, Inc. and the party for which it was intended, the requestor. It is an unpublished original drawing not to be distributed, reproduced or exhibited without the explicit consent of Southwest Signs, Inc. Please contact your Account Manager for questions regarding this statement.

Floor & Decor
9969 Professional Blvd.
Baton Rouge, LA 70809

Project ID#: **127362**
Project Mgr: **Robert SCiarra**
Designer: **Kirk Forster**
Created on: **04/16/2021**

REVISION	R1

SIGN D	45" Stone
Type:	Individual Channel Letters
Illumination:	Internally Illuminated LED
Square Footage:	75.35



Sign Layout Detail
Scale: 1/4" = 1'-0"

Electrical Detail:

White LEDs
(3) 60w Transformer @ 1.1 Amps
Total Amps: 3.3
(1) 20 amp 120V Circuit Req.

General Notes:

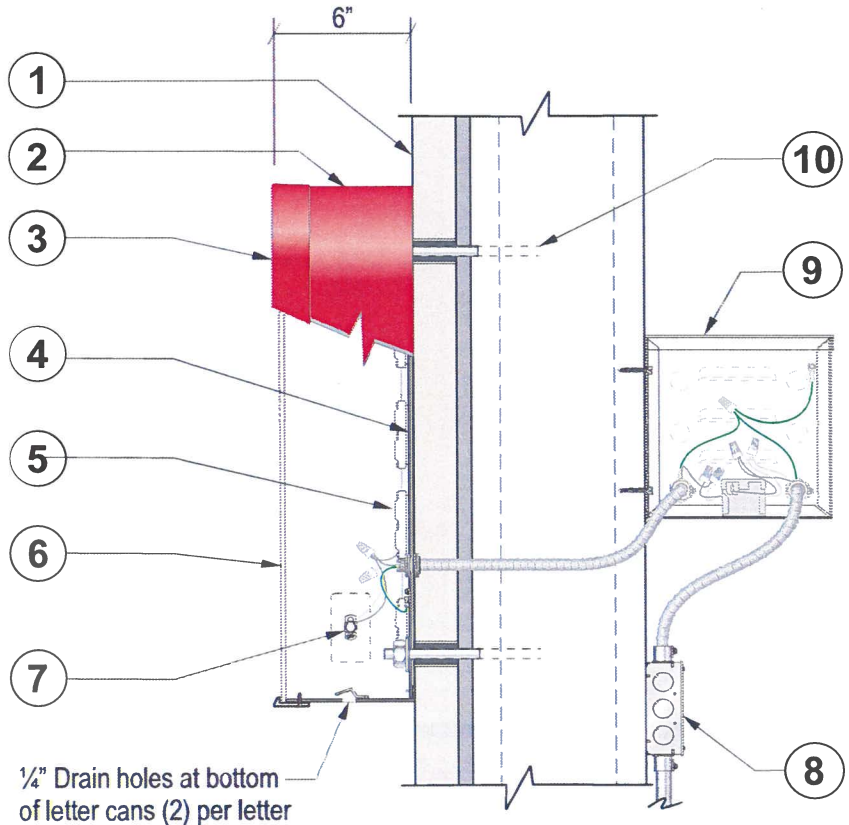
This sign is to be installed in accordance with the requirements of Article 600 of the National Electrical Code.

- 1) Grounded and bonded per NEC 600.7/NEC 250
- 2) Existing branch circuit in compliance with NEC 600.5, not to exceed 20 amps
- 3) Sign is to be UL listed per NEC 600.3
- 4) UL disconnect switch per NEC 600.6- required per sign component before leaving manufacturer*

*For multiple signs, a disconnect is permitted but not required for each section

Specifications: Channel Letters

- 1. Existing Facade: TBD
- 2. 0.040" Pre-finished Red letter returns
- 3. 1" Jewelite trimcap (Red) bonded to face and #8 pan head screws to returns
- 4. 3mm Signabond Lite composite backs fastened to returns w/ 1/2" 18 gauge staples. Seal w/ VOC compliant 360 white latex caulk to prevent moisture. (Interior of sign can painted white for maximum illumination)
- 5. White LEDs
- 6. 3/16" White lexan w/ first surface applied vinyl
■ 3M 3630-33 Red
- 7. Disconnect switch UL Outdoor rated toggle type w/ neoprene boot per NEC 600-6
- 8. Primary electrical feed in UL conduit / customer supplied UL junction box
- 9. Transformers within UL enclosure (removable lid), 1/4" x 1" min screws
- 10. Mounting hardware: TBD



Section @ LED Channel Letter
Front-Lit (Remote) Scale: N.T.S.



This rendering is the property of Southwest Signs, Inc. It is for the exclusive use of Southwest Signs, Inc. and the party for which is was intended, the requestor. It is an unpublished original drawing not to be distributed, reproduced or exhibited without the explicit consent of Southwest Signs, Inc. Please contact your Account Manager for questions regarding this statement.

Floor & Decor
9969 Professional Blvd.
Baton Rouge, LA 70809

Project ID#: **127362**
Project Mgr: **Robert SCiarra**
Designer: **Kirk Forster**
Created on: **04/16/2021**

REVISION	R1

SIGN E	12" Floor & Decor Customer Pick-Up
Type:	Individual Channel Letters
Illumination:	Internally Illuminated LED
Square Footage:	25.65

25'-7 13/16" [307 13/16"]

12"

FLOOR & DECOR CUSTOMER PICK-UP

Sign Layout Detail

Scale: 3/8" = 1'-0"

Electrical Detail:

White LEDs
(2) 60w Transformer @ 1.1 Amps
Total Amps: 2.2
(1) 20 amp 120V Circuit Req.



General Notes:

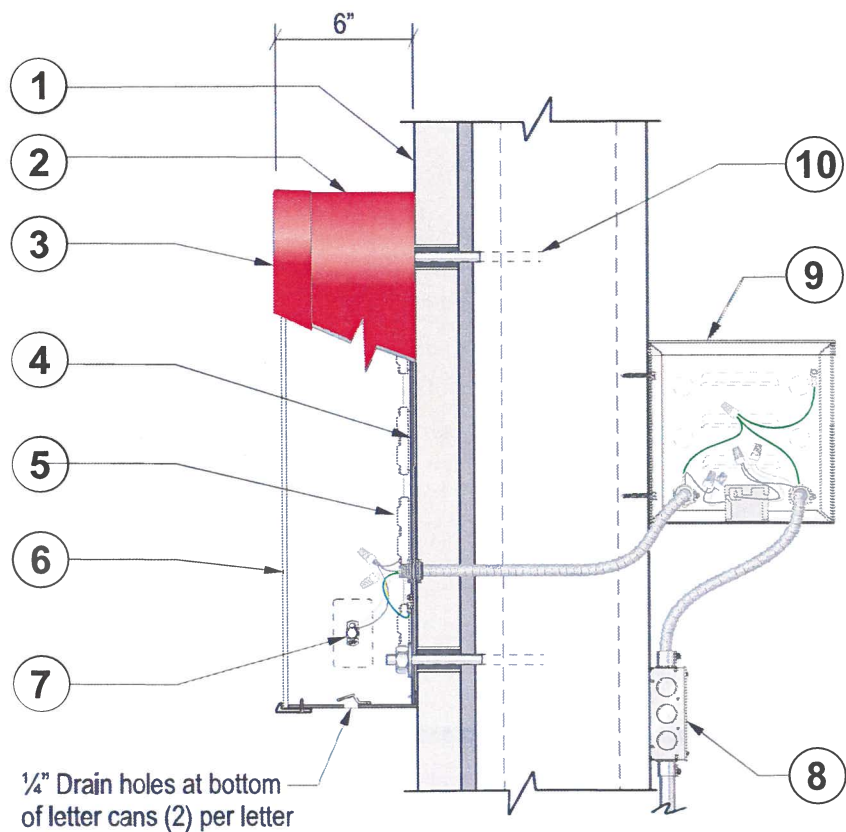
This sign is to be installed in accordance with the requirements of Article 600 of the National Electrical Code.

- 1) Grounded and bonded per NEC 600.7/NEC 250
- 2) Existing branch circuit in compliance with NEC 600.5, not to exceed 20 amps
- 3) Sign is to be UL listed per NEC 600.3
- 4) UL disconnect switch per NEC 600.6- required per sign component before leaving manufacturer*

*For multiple signs, a disconnect is permitted but not required for each section

Specifications: Channel Letters

1. Existing Facade: TBD
2. 0.040" Pre-finished Red letter returns
3. 1" Jewelite trimcap (Red) bonded to face and #8 pan head screws to returns
4. 3mm Signabond Lite composite backs fastened to returns w/ 1/2" 18 gauge staples. Seal w/ VOC compliant 360 white latex caulk to prevent moisture. (Interior of sign can painted white for maximum illumination)
5. White LEDs
6. 3/16" White lexan w/ first surface applied vinyl
■ 3M 3630-33 Red
7. Disconnect switch UL Outdoor rated toggle type w/ neoprene boot per NEC 600-6
8. Primary electrical feed in UL conduit / customer supplied UL junction box
9. Transformers within UL enclosure (removable lid), 1/4" x 1" min screws
10. Mounting hardware: TBD



Section @ LED Channel Letter
Front-Lit (Remote)

Scale: N.T.S.



This rendering is the property of Southwest Signs, Inc. It is for the exclusive use of Southwest Signs, Inc. and the party for which it was intended, the requestor. It is an unpublished original drawing not to be distributed, reproduced or exhibited without the explicit consent of Southwest Signs, Inc. Please contact your Account Manager for questions regarding this statement.

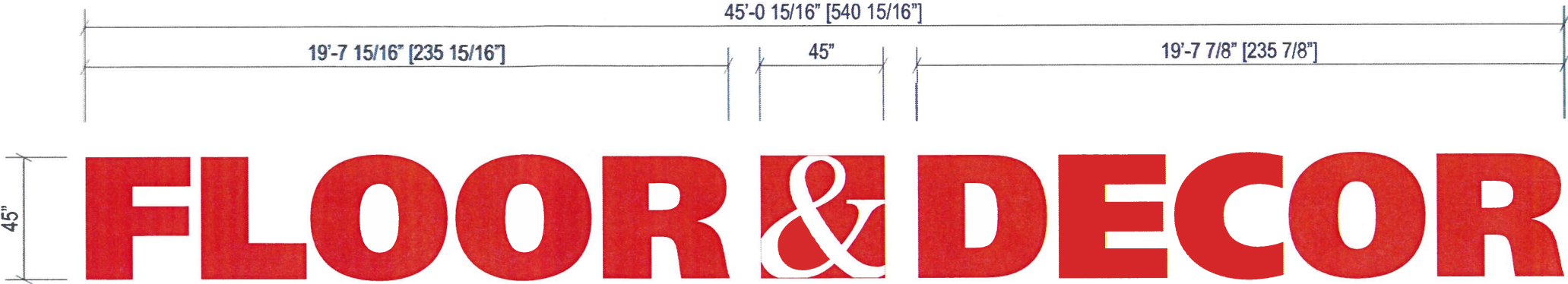
Floor & Decor
9969 Professional Blvd.
Baton Rouge, LA 70809

Project ID#: **127362**
Project Mgr: **Robert SCiarra**
Designer: **Kirk Forster**
Created on: **04/16/2021**

REVISION

R1

SIGN F	45" Floor & Decor [Linear]
Type:	Individual Channel Letters
Illumination:	Internally Illuminated LED
Square Footage:	169.04

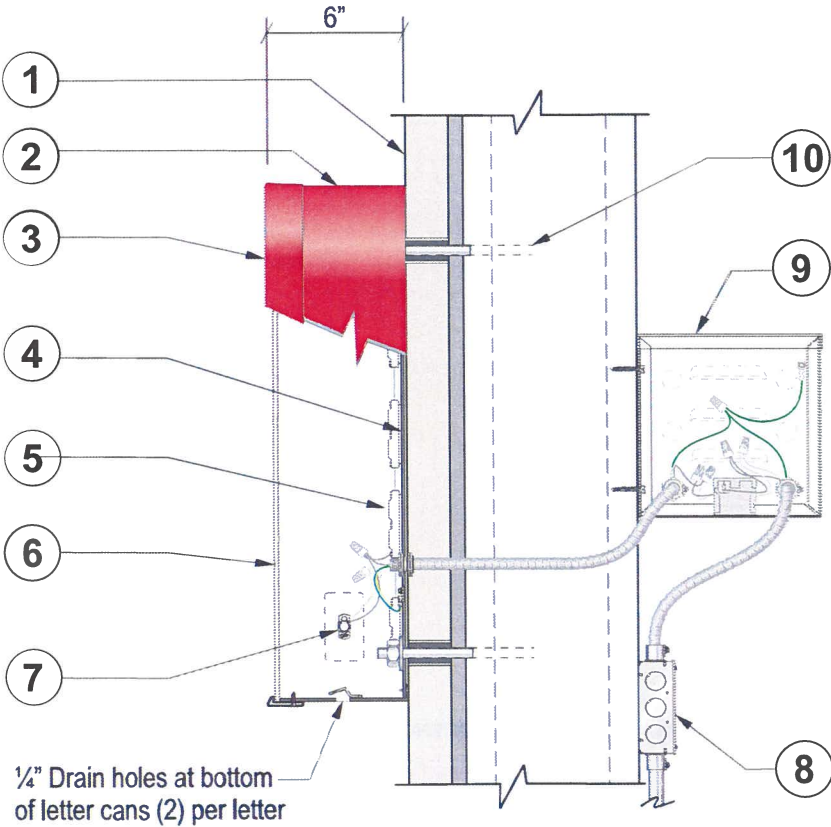


Sign Layout Detail
Scale: 3/16" = 1'-0"

Electrical Detail:
White LEDs (5) 60w Transformer @ 1.1 Amps Total Amps: 5.5 (1) 20 amp 120V Circuit Req.

General Notes:
This sign is to be installed in accordance with the requirements of Article 600 of the National Electrical Code.
1) Grounded and bonded per NEC 600.7/NEC 250
2) Existing branch circuit in compliance with NEC 600.5, not to exceed 20 amps
3) Sign is to be UL listed per NEC 600.3
4) UL disconnect switch per NEC 600.6- required per sign component before leaving manufacturer*
*For multiple signs, a disconnect is permitted but not required for each section

Specifications: Channel Letters
1. Existing Facade: TBD
2. 0.040" Pre-finished Red letter returns
3. 1" Jewelite trimcap (Red) bonded to face and #8 pan head screws to returns
4. 3mm Signabond Lite composite backs fastened to returns w/ 1/2" 18 gauge staples. Seal w/ VOC compliant 360 white latex caulk to prevent moisture. (Interior of sign can painted white for maximum illumination)
5. White LEDs
6. 3/16" White lexan w/ first surface applied vinyl ■ 3M 3630-33 Red
7. Disconnect switch UL Outdoor rated toggle type w/ neoprene boot per NEC 600-6
8. Primary electrical feed in UL conduit / customer supplied UL junction box
9. Transformers within UL enclosure (removable lid), 1/4" x 1" min screws
10. Mounting hardware: TBD



Section @ LED Channel Letter
Front-Lit (Remote) Scale: N.T.S.



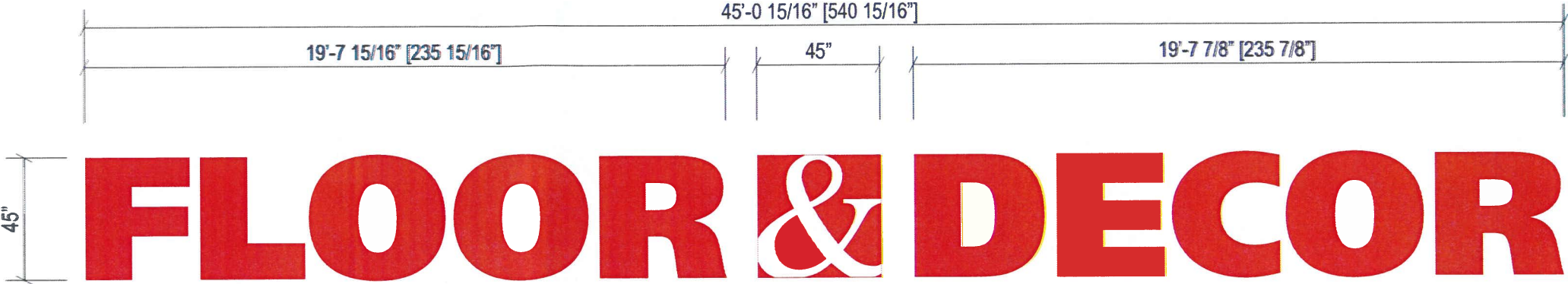
This rendering is the property of Southwest Signs, Inc. It is for the exclusive use of Southwest Signs, Inc. and the party for which it was intended, the requestor. It is an unpublished original drawing not to be distributed, reproduced or exhibited without the explicit consent of Southwest Signs, Inc. Please contact your Account Manager for questions regarding this statement.

Floor & Decor
9969 Professional Blvd.
Baton Rouge, LA 70809

Project ID#: 127362
Project Mgr: Robert SCiarra
Designer: Kirk Forster
Created on: 04/16/2021

REVISION	R1

SIGN G	45" Floor & Decor [Linear]
Type:	Individual Channel Letters
Illumination:	Internally Illuminated LED
Square Footage:	169.04

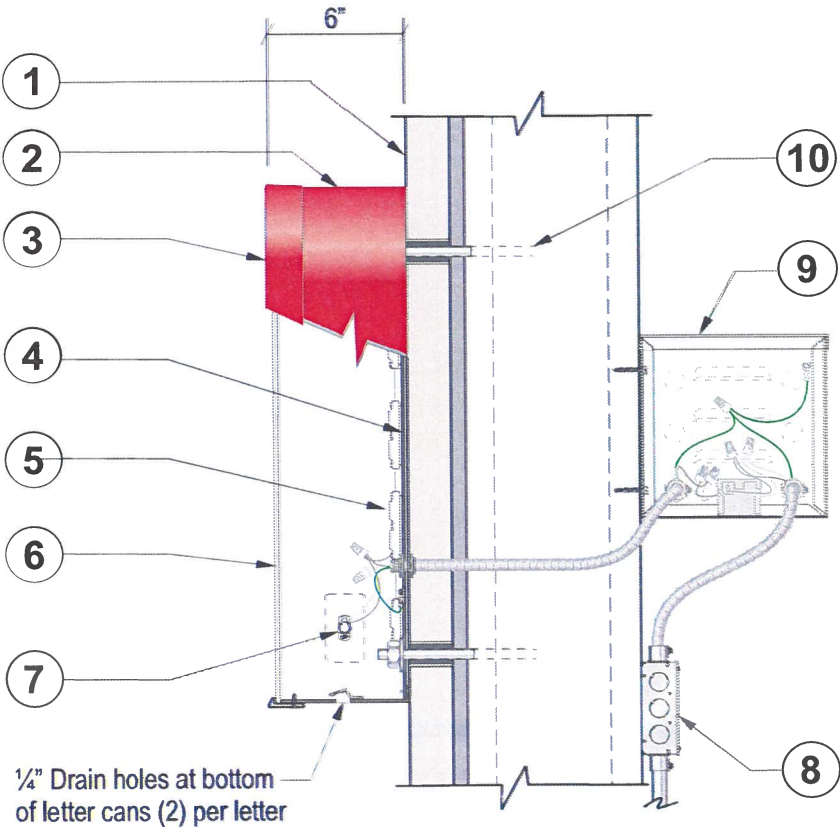


Sign Layout Detail
Scale: 3/16" = 1'-0"

Electrical Detail:
White LEDs (5) 60w Transformer @ 1.1 Amps Total Amps: 5.5 (1) 20 amp 120V Circuit Req.

General Notes:
This sign is to be installed in accordance with the requirements of Article 600 of the National Electrical Code.
1) Grounded and bonded per NEC 600.7/NEC 250
2) Existing branch circuit in compliance with NEC 600.5, not to exceed 20 amps
3) Sign is to be UL listed per NEC 600.3
4) UL disconnect switch per NEC 600.6- required per sign component before leaving manufacturer*
*For multiple signs, a disconnect is permitted but not required for each section

Specifications: Channel Letters
1. Existing Facade: TBD
2. 0.040" Pre-finished Red letter returns
3. 1" Jewelite trimcap (Red) bonded to face and #8 pan head screws to returns
4. 3mm Signabond Lite composite backs fastened to returns w/ 1/2" 18 gauge staples. Seal w/ VOC compliant 360 white latex caulk to prevent moisture. (Interior of sign can painted white for maximum illumination)
5. White LEDs
6. 3/16" White lexan w/ first surface applied vinyl ■ 3M 3630-33 Red
7. Disconnect switch UL Outdoor rated toggle type w/ neoprene boot per NEC 600-6
8. Primary electrical feed in UL conduit / customer supplied UL junction box
9. Transformers within UL enclosure (removable lid), 1/4" x 1" min screws
10. Mounting hardware: TBD



Section @ LED Channel Letter
Front-Lit (Remote) Scale: N.T.S.



This rendering is the property of Southwest Signs, Inc. It is for the exclusive use of Southwest Signs, Inc. and the party for which it was intended, the requestor. It is an unpublished original drawing not to be distributed, reproduced or exhibited without the explicit consent of Southwest Signs, Inc. Please contact your Account Manager for questions regarding this statement.

Floor & Decor
9969 Professional Blvd.
Baton Rouge, LA 70809

Project ID#: **127362**
Project Mgr: **Robert SCiarra**
Designer: **Kirk Forster**
Created on: **04/16/2021**

REVISION	R1

SIGN H	Floor & Decor
Type:	D/F Monument Sign
Illumination:	Internally Illuminated w/ LED's
Square Footage:	50.00

Color Specifications:

3M 3630-33 Red

Electrical Detail:

- White LEDs
- (X) 60w Power Supplies
- Total Amps: X.XX
- (1) 20 amp 120V Circuit Req.



General Notes:

This sign is to be installed in accordance with the requirements of Article 600 of the National Electrical Code.

- Grounded and bonded per NEC 600.7/NEC 250
- Existing branch circuit in compliance with NEC 600.5, not to exceed 20 amps
- Sign is to be UL listed per NEC 600.3
- UL disconnect switch per NEC 600.6- required per sign component before leaving manufacturer. For multiple signs, a disconnect is permitted but not required for each section
- The location of the disconnect switch after installation shall comply with article 600.6 (A) (1) per NEC

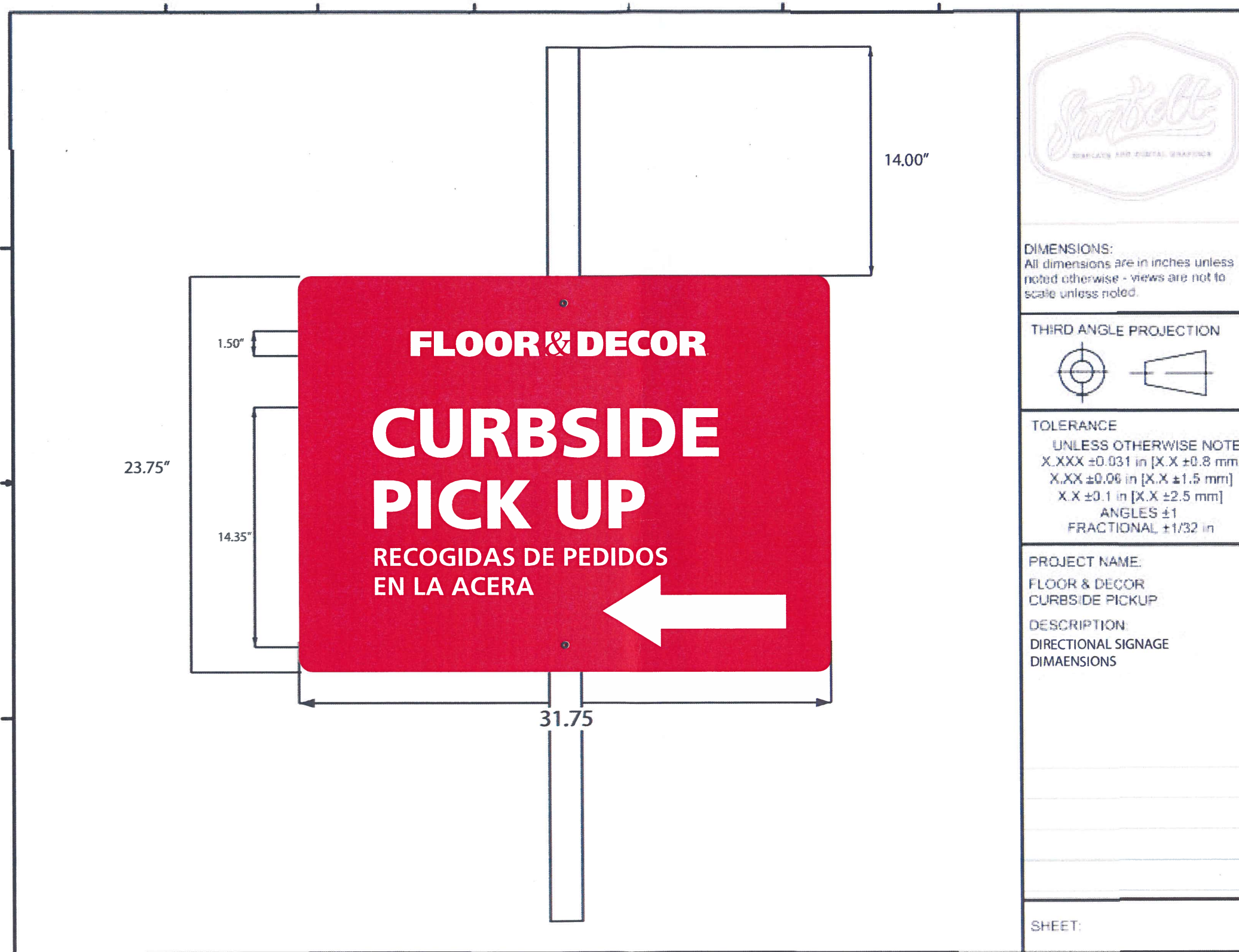


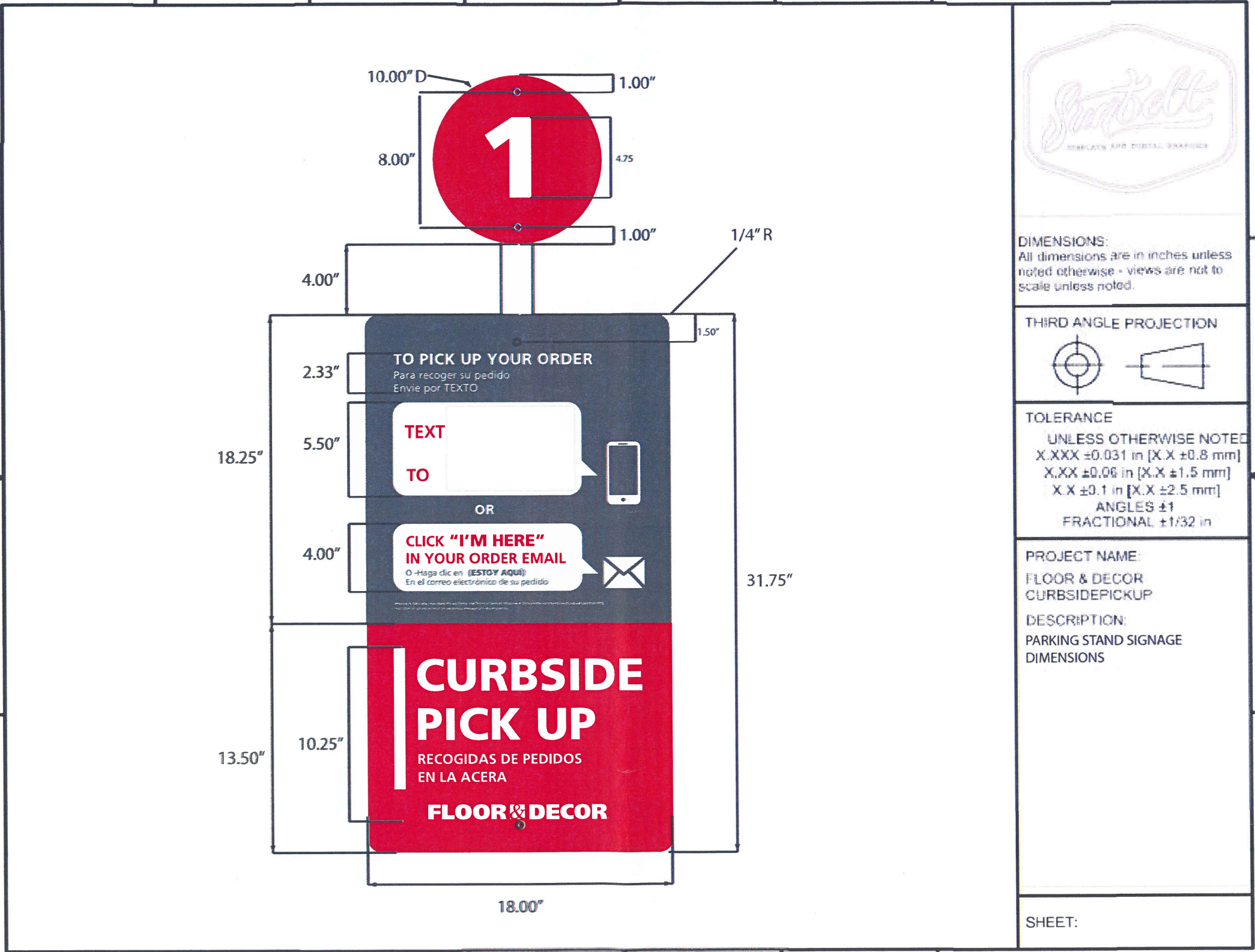
This rendering is the property of Southwest Signs, Inc. It is for the exclusive use of Southwest Signs, Inc. and the party for which it was intended, the requestor. It is an unpublished original drawing not to be distributed, reproduced or exhibited without the explicit consent of Southwest Signs, Inc. Please contact your Account Manager for questions regarding this statement.

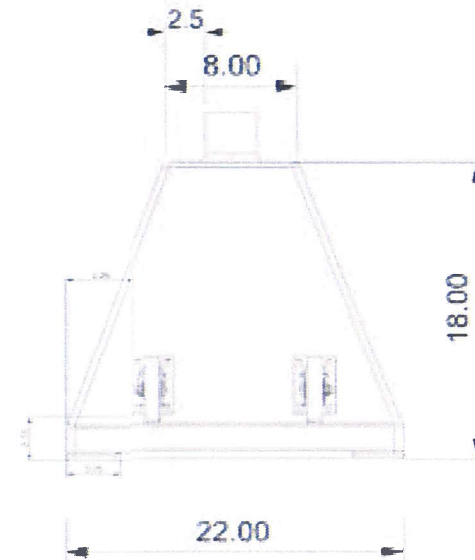
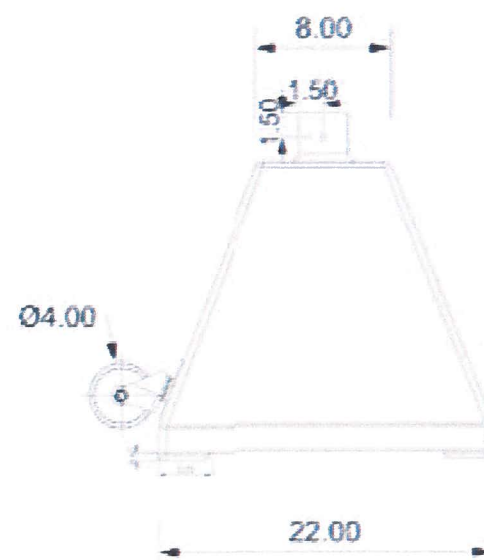
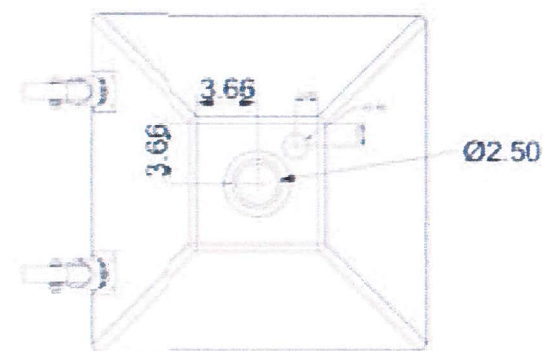
Floor & Decor
9969 Professional Blvd.
Baton Rouge, LA 70809

Project ID#: 127362
Project Mgr: Robert SCiarra
Designer: Kirk Forster
Created on: 04/16/2021

REVISION	R1	04/23/21	MD	Updated size foe T/W/S to 36"
	R2	04/26/21	MD	Adjusted monument size to 5' x 10', added setback note

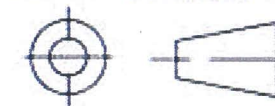






DIMENSIONS:
All dimensions are in inches unless noted otherwise - views are not to scale unless noted.

THIRD ANGLE PROJECTION

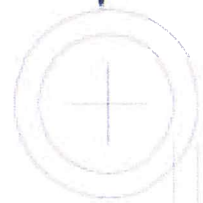


TOLERANCE
UNLESS OTHERWISE NOTED
X.XXX ±0.031 in [X.X ±0.8 mm]
X.XX ±0.06 in [X.X ±1.5 mm]
X.X ±0.1 in [X.X ±2.5 mm]
ANGLES ±1
FRACTIONAL ±1/32 in

PROJECT NAME:
FLOOR & DECOR
CURBSIDE PICKUP
DESCRIPTION:
OUTDOOR SIGN STAND
FILLED BASE
PART NUMBER:
F&D-CSPUS-1011
REV. DATE & REV. NUMBER:
8/15/2020 REV1

SHEET:

Ø2.45



125

Ø0.38

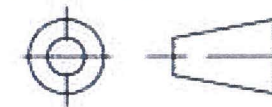
18.00

96.00



DIMENSIONS:
All dimensions are in inches unless
noted otherwise - views are not to
scale unless noted.

THIRD ANGLE PROJECTION



TOLERANCE
UNLESS OTHERWISE NOTED
X.XXX ±0.031 in [X.X ±0.8 mm]
X.XX ±0.06 in [X.X ±1.5 mm]
X.X ±0.1 in [X.X ±2.5 mm]
ANGLES ±1
FRACTIONAL ±1/32 in

PROJECT NAME:
FLOOR & DECOR
CURBSIDE PICKUP
DESCRIPTION:
HDPE POLE COVER

PART NUMBER:
F&D-CSPUS-1022
REV. DATE & REV. NUMBER
8/15/2020 REV1

SHEET:

Grand Opening Temporary Signage



Construction Fence Banners



Construction Fence Banners



This rendering is the property of Southwest Signs, Inc. It is for the exclusive use of Southwest Signs, Inc. and the party for which it was intended, the requestor. It is an unpublished original drawing not to be distributed, reproduced or exhibited without the explicit consent of Southwest Signs, Inc. Please contact your Account Manager for questions regarding this statement.

Floor & Decor
9969 Professional Blvd.
Baton Rouge, LA 70809

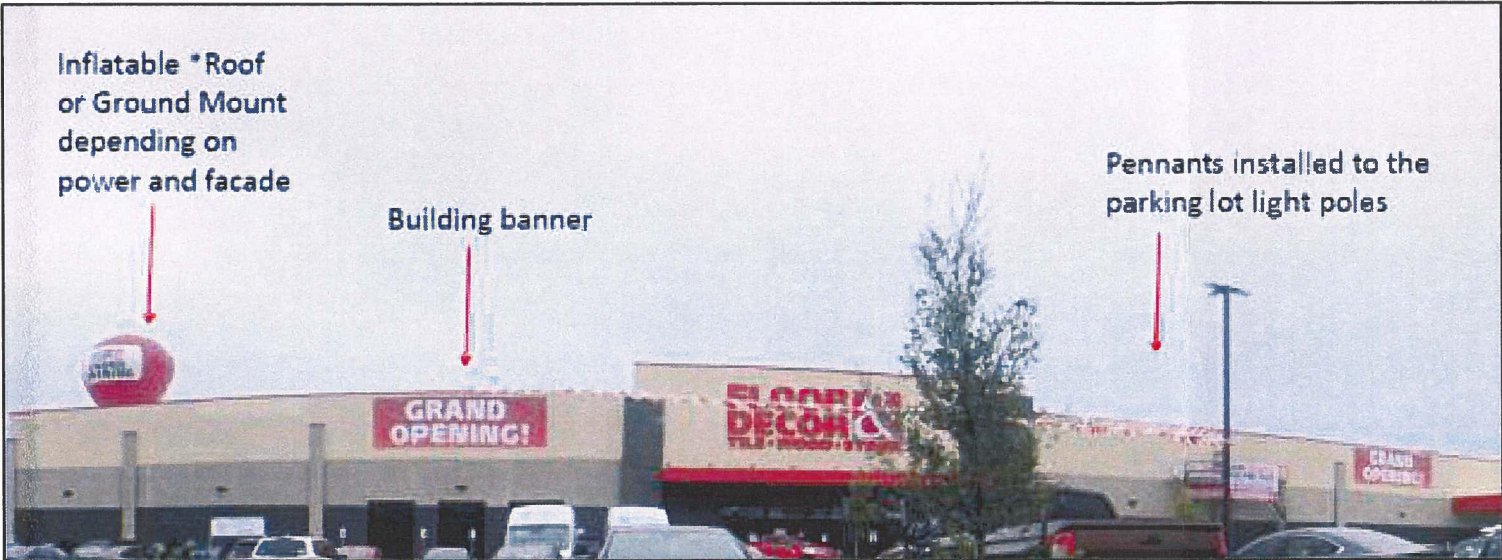
Project ID#: 127362
Project Mgr: Robert SCiarra
Designer: Kirk Forster
Created on: 04/16/2021

REVISION	R1

Grand Opening Temporary Signage



Grand Opening Signage



This rendering is the property of Southwest Signs, Inc. It is for the exclusive use of Southwest Signs, Inc. and the party for which it was intended, the requestor. It is an unpublished original drawing not to be distributed, reproduced or exhibited without the explicit consent of Southwest Signs, Inc. Please contact your Account Manager for questions regarding this statement.

Floor & Decor
9969 Professional Blvd.
Baton Rouge, LA 70809

Project ID#: **127362**
Project Mgr: Robert SCiarra
Designer: Kirk Forster
Created on: 04/16/2021

REVISION	R1